



Price
£675,000

Freehold

4x  2x  2x 

**Burwood Avenue,
Kenley, Surrey, CR8**

OVER 60?

Secure this property
for up to **59% less!**

cubitt & west
Helping you move forwards

Accommodation

GROUND FLOOR

Porch

Entrance Hall

Cloakroom

Lounge/Play Area: 32'7 x 11'0 (9.94m x 3.36m)

Kitchen/Dining Area: 8'5 x 7'0 (2.57m x 2.14m)

Utility Room

FIRST FLOOR

Landing

Bedroom 2: 13'4 x 11'0 (4.07m x 3.36m)

Bedroom 3: 11'5 x 10'11 (3.48m x 3.33m)

Bedroom 4: 9'8 x 7'4 (2.95m x 2.24m)

Bathroom

SECOND FLOOR

Bedroom 1: 12'4 x 10'4 (3.76m x 3.15m)

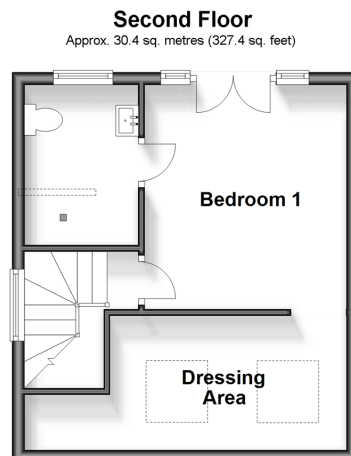
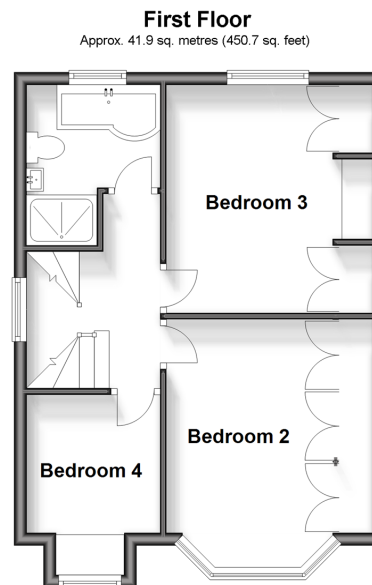
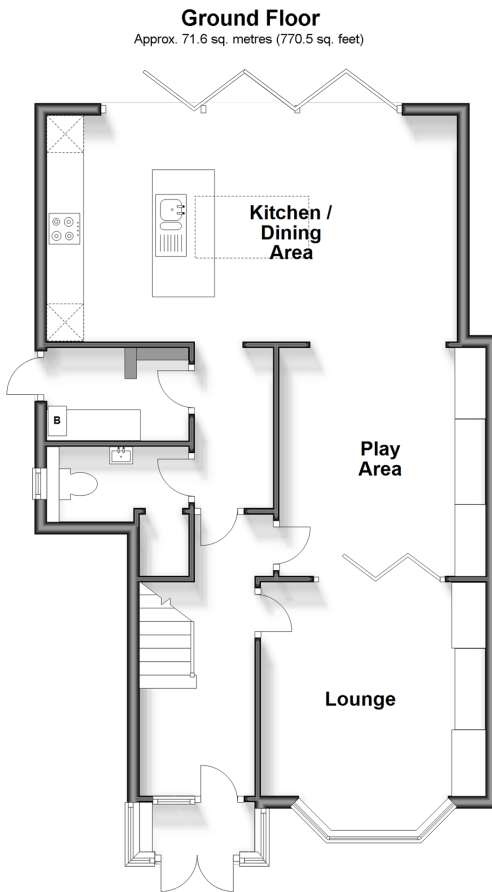
En-Suite Shower Room: 9'4 x 5'7 (2.85m x 1.70m)

Dressing Area: 17'4 x 6'9 (5.29m x 2.06m)

OUTSIDE

Front & Rear Gardens

Off Road Parking





Main features

- Stunning semi-detached family home in popular family area with driveway
- Loft extension with bedroom 1 and en-suite shower room
- Playroom, utility, cloakroom and stunning rear landscaped garden
- Walking distance to Kenley station and local shops
- Excellent schools for all ages

Nearest Schools

Primary Schools: Harris Primary 0.8 miles, The Hayes Primary 0.9 miles, Christ Church CofE Primary (Purley) 1.2 miles
Secondary Schools: Riddlesdown Collegiate 0.8 miles, Thomas More Catholic School 1.3 miles, Woodcote High School 1.3 miles

Transport Information

Train Stations: Kenley 0.5 miles, Purley 1.5 miles, Riddlesdown 1.6 miles, Reedham 1.6 miles

Address

Burwood Avenue, Kenley, Surrey, CR8

Directions

For directions to this property please contact us.



cubitt&west
Helping you move forwards

Call Purley Branch 020 8660 8882 ■ cubittandwest.co.uk



- A private rental licensing scheme applies to some properties in this area, please contact us before proceeding
- Appliances & services are untested, dimensions are approximate and floor plans are not to scale

- Legal advice should be taken to verify fixtures/fittings, planning, alterations and/or lease details
- Through a Homewise Home For Life Plan people aged 60+ can secure this property for up to 59% less, by purchasing a Lifetime Lease.



21507455/20240323/D1/MS