



Price

£800,000

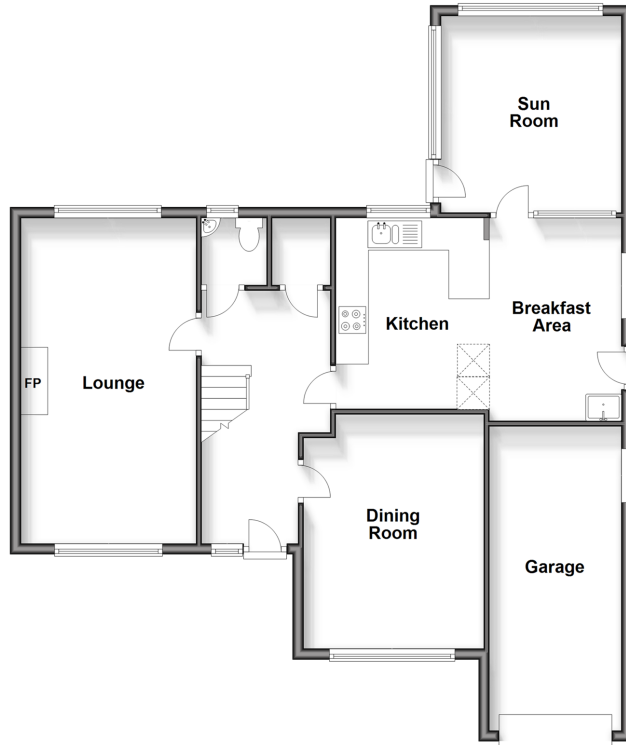
Freehold

3x  2x  3x 

**Ewhurst Avenue, South
Croydon, Surrey, CR2**

cubitt & west
Helping you move forwards

Ground Floor
Approx. 94.1 sq. metres (1012.5 sq. feet)



First Floor
Approx. 58.6 sq. metres (630.3 sq. feet)



Accommodation

GROUND FLOOR

Entrance Hall

Cloakroom

Lounge: 19'8 x 10'7 (6.00m x 3.23m)

Sun Room: 12'1 x 10'6 (3.69m x 3.20m)

Dining Room: 14'3 x 10'6 (4.35m x 3.20m)

Kitchen: 11'5 x 9'3 (3.48m x 2.82m)

Breakfast Room: 12'3 x 8'7 (3.74m x 2.62m)

FIRST FLOOR

Landing

Bedroom 1: 14'9 x 10'6 (4.50m x 3.20m)

Bedroom 2: 13'5 x 10'7 (4.09m x 3.23m)

Bedroom 3: 10'7 x 10'5 (3.23m x 3.18m)

Bathroom: 10'6 x 5'9 (3.20m x 1.75m)

Shower Room

OUTSIDE

Front Garden

Rear Garden

Garage & Driveway



Main features

- Large detached home with 2 bathrooms
- Some updating required - ideal home to put your own stamp on
- Garage & driveway, large rear garden
- Downstairs cloakroom, breakfast room and sun room
- Desirable Sanderstead location
- Excellent state and private schools for all ages in local area



Nearest Schools

Primary Schools: Ridgeway Primary 0.1 miles, Purley Oaks Primary 0.7 miles, Gresham Primary 0.8 miles Secondary Schools: Croham Hurst School 0.8 miles, Croydon High School 0.9 miles, Royal Russell School 0.9 miles



Transport Information

Train Stations: Sanderstead 0.5 miles, Purley Oaks 0.8 miles, South Croydon 1.2 miles



Address

Ewhurst Avenue, South Croydon, Surrey, CR2



Directions

For directions to this property please contact us.



cubitt&west
Helping you move forwards

Call Purley Branch 020 8660 8882 ■ [cubittandwest.co.uk](https://www.cubittandwest.co.uk)



- A private rental licensing scheme applies to some properties in this area, please contact us before proceeding
- Appliances & services are untested, dimensions are approximate and floor plans are not to scale

- Legal advice should be taken to verify fixtures/fittings, planning, alterations and/or lease details

EPC RATING

CURRENT: C(69) POTENTIAL: B(81)

21511210/20240321/D1/MS