



Price

£280,000

Leasehold

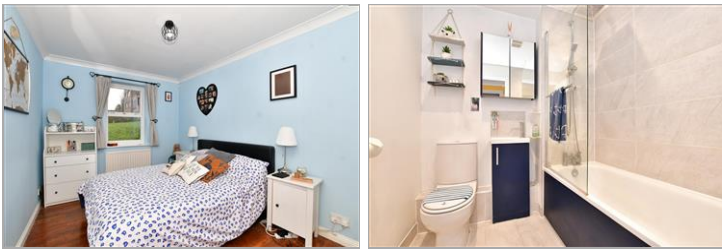
2x  1x  1x 

Ward Close, South  
Croydon, Surrey, CR2

**OVER 60?**

Secure this property  
for up to **59% less!**

**cubitt & west**  
Helping you move forwards



## Main features

- Modern ground floor apartment with allocated parking space
- Presented in excellent decorative order
- Walking distance to South Croydon train station
- Normanton Meadow just a few steps away
- Further visitor's parking

## Accommodation

### GROUND FLOOR

Entrance Hall

Living Room: 18'2 x 11'4 (5.54m x 3.46m)

Kitchen: 12'9 x 6'6 (3.89m x 1.98m)

Bedroom 1: 12'6 x 8'8 (3.81m x 2.64m)

Bedroom 2: 12'8 x 6'5 (3.86m x 1.96m)

Bathroom: 6'9 x 6'4 (2.06m x 1.93m)

### OUTSIDE

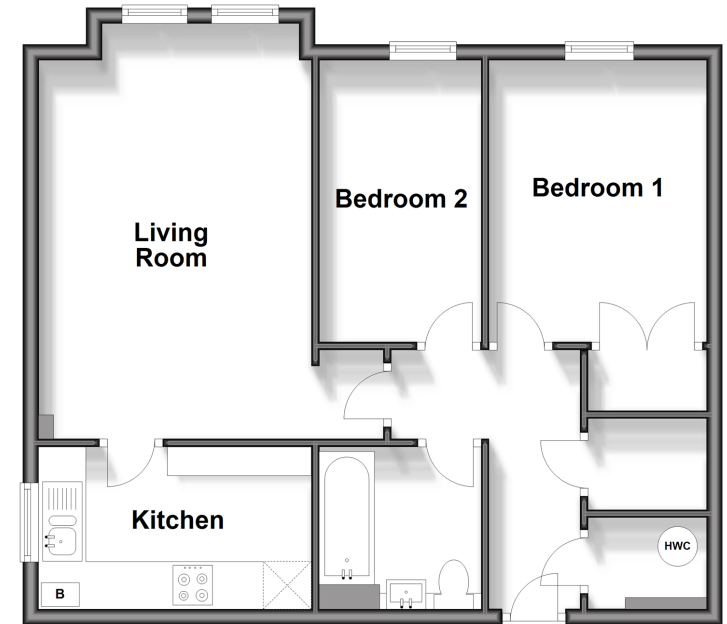
Allocated Parking Space

Communal Gardens

Visitor's Parking

### Ground Floor

Approx. 60.4 sq. metres (650.3 sq. feet)



**Call Purley - 020 8660 8882 ■ cubittandwest.co.uk**

- A private rental licensing scheme applies to some properties in this area, please contact us before proceeding
- Legal advice should be taken to verify fixtures/fittings, planning, alterations and/or lease details
- Appliances & services are untested, dimensions are approximate and floor plans are not to scale
- Through a Homewise Home For Life Plan people aged 60+ can secure this property for up to 59% less, by purchasing a Lifetime Lease.



21510984/20240321/DI/TS