



OVER 60?

Secure this property
for up to **59% less!**

Price

£450,000

Freehold

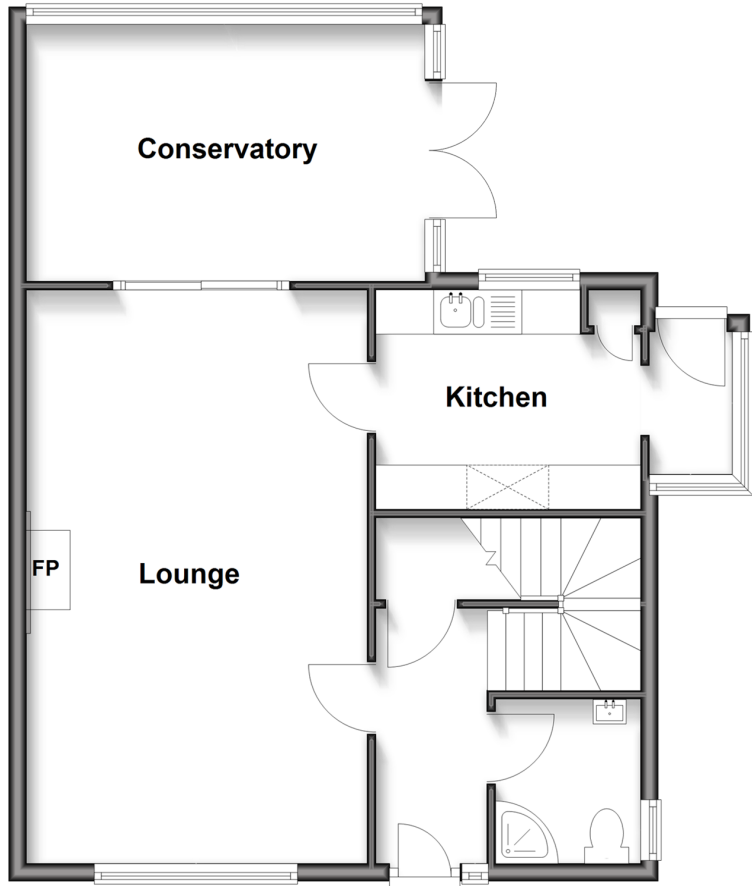
3x  2x  1x 

Link Lane, Pulborough, West Sussex, RH20

cubitt&west
Helping you move forwards

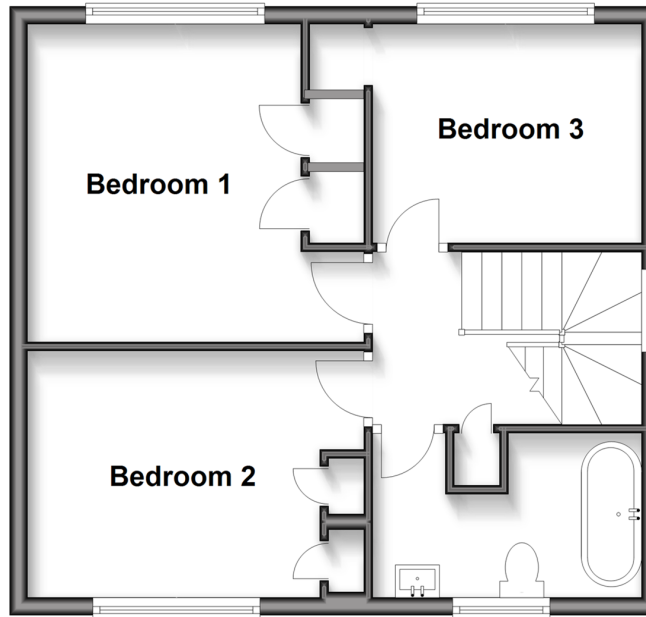
Ground Floor

Approx. 60.4 sq. metres (650.3 sq. feet)



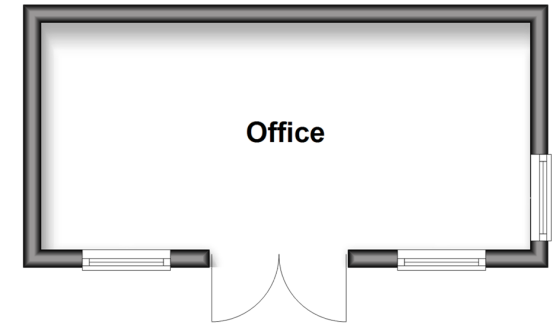
First Floor

Approx. 45.2 sq. metres (486.2 sq. feet)



Outbuilding

Approx. 14.3 sq. metres (153.8 sq. feet)



Accommodation

GROUND FLOOR

Entrance Hall

Shower Room

Lounge: 21'3 x 12'8 (6.48m x 3.86m)

Conservatory: 14'10 x 9'5 (4.52m x 2.87m)

Kitchen: 9'11 x 8'1 (3.02m x 2.47m)

Lobby: 5'4 x 3'1 (1.63m x 0.94m)

FIRST FLOOR

Landing

Family Bathroom

Bedroom 1: 11'8 x 11'2 up to fitted wardrobes (3.56m x 3.41m)

Bedroom 2: 11'1 up to fitted wardrobes x 9'1 (3.38m x 2.77m)

Bedroom 3: 9'11 up to recess x 8'3 (3.02m x 2.52m)

OUTBUILDING

Office: 18'3 x 8'5 (5.57m x 2.57m)

OUTSIDE

Off-Road Parking

Rear Garden



Main features

- A spacious family home on a corner plot position
- Well presented throughout
- Ample off-road parking for multiple vehicles
- There is a fantastic office in the rear garden with electrics and heating; an ideal space for working from home, or even to use as a gym or a kids den
- Views from the front of the property across the large recreation ground and park
- Close to the primary school, shops and Doctors



Nearest Schools

Primary School: St Mary's C of E Primary 0.1 miles

Secondary School: The Weald School 4.8 miles



Transport Information

Train Stations:
Pulborough 0.8 miles
Amberley 4.7 miles



Address

Link Lane, Pulborough, West Sussex, RH20



Directions

For directions to this property please contact us.



cubitt&west
Helping you move forwards

Call Pulborough Branch 01798 875151 ■ [cubittandwest.co.uk](https://www.cubittandwest.co.uk)



■ Legal advice should be taken to verify fixtures/fittings, planning, alterations and/or lease details ■ Appliances & services are untested, dimensions are approximate and floor plans are not to scale
■ Through a Homewise Home For Life Plan people aged 60+ can secure this property for up to 59% less, by purchasing a Lifetime Lease.



21404349/20250531/CT/KF