

OVER 60?

Secure this property
for up to **59% less!**



Price
£400,000
Freehold

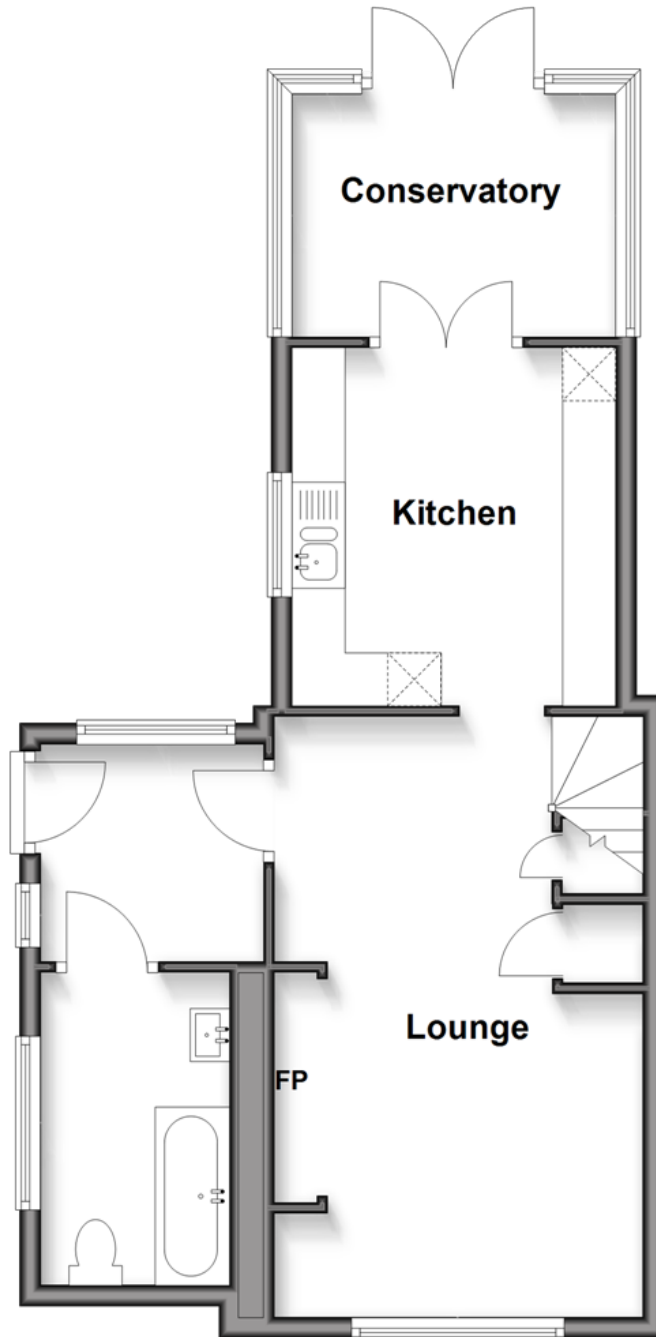
2x  1x  1x 

Well Cottage, Andrews Hill, Billingshurst,
West Sussex, RH14

cubitt&west
Helping you move forwards

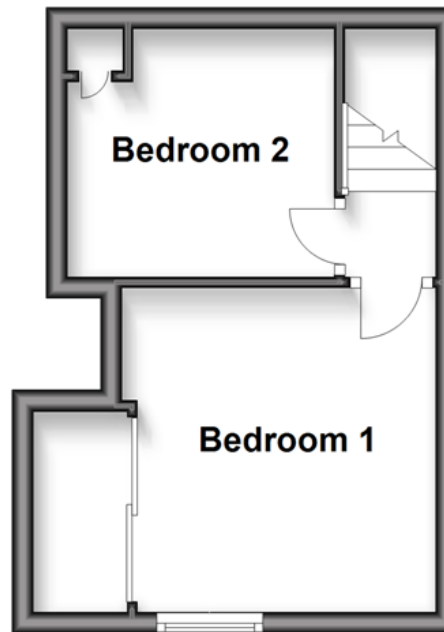
Ground Floor

Approx. 48.9 sq. metres (525.9 sq. feet)



First Floor

Approx. 19.4 sq. metres (208.5 sq. feet)



Accommodation

GROUND FLOOR

Entrance Hall

Family Bathroom

Lounge: 18'7 x 11'5 (5.67m x 3.48m)

Kitchen: 11'5 x 10'0 (3.48m x 3.05m)

Conservatory

FIRST FLOOR

Landing

Bedroom 1: 10'3 x 9'7 up to fitted wardrobes (3.13m x 2.92m)

Bedroom 2: 8'7 x 7'7 into fitted wardrobes (2.62m x 2.31m)

OUTSIDE

Gated Driveway

Off-Road Parking

Side Garden

Rear Garden

Office



Main features

- Semi-rural location and on a generous plot size
- Renovated throughout to a high standard, including a lovely new conservatory
- Feature Inglenook fireplace in the lounge
- Views across the rear garden from the kitchen
- Gated entrance providing extra security
- A useful outside office in the rear garden
- Scope for further extensions, subject to the necessary planning consent



Nearest Schools

Primary School Billingshurst Primary Academy 1.0 miles

Further Education: The Weald School 0.7 miles



Transport Information

Train Stations:
Billingshurst 0.7 miles
Pulborough 4.1 miles



Address

Well Cottage, Andrews Hill, Billingshurst, West Sussex, RH14



Directions

For directions to this property please contact us.



cubitt&west
Helping you move forwards

Call Pulborough Branch 01798 875151 ■ cubittandwest.co.uk



- If buying to let, the energy rating will need to be improved to at least 'E' rating before you can let the property
- Appliances & services are untested, dimensions are approximate and floor plans are not to scale

- Legal advice should be taken to verify fixtures/fittings, planning, alterations and/or lease details
- Through a Homewise Home For Life Plan people aged 60+ can secure this property for up to 59% less, by purchasing a Lifetime Lease.



21406107/20250307/KT/KF