

**OVER 60?**

Secure this property  
for up to **59% less!**



**Price**  
**£335,000**  
**Freehold**

3x  1x  1x 

Meadow Way, Petworth, West Sussex,  
GU28

**cubitt & west**  
Helping you move forwards



## Main features

- **Spacious home with the most wonderful countryside views from the front of the property**
- **Popular open plan living accommodation**
- **Family bathroom with both a bath and a shower**
- **Easy to maintain rear garden**
- **Set in the popular historical town of Petworth**
- **Garage en-bloc and an allocated parking space**

## Accommodation

### GROUND FLOOR

Entrance Hall  
Cloakroom  
Lounge : 14'3 x 11'3 (4.35m x 3.43m)  
Dining Area: 11'10 x 8'2 (3.61m x 2.49m)  
Kitchen: 11'8 x 8'10 (3.56m x 2.69m)

### FIRST FLOOR

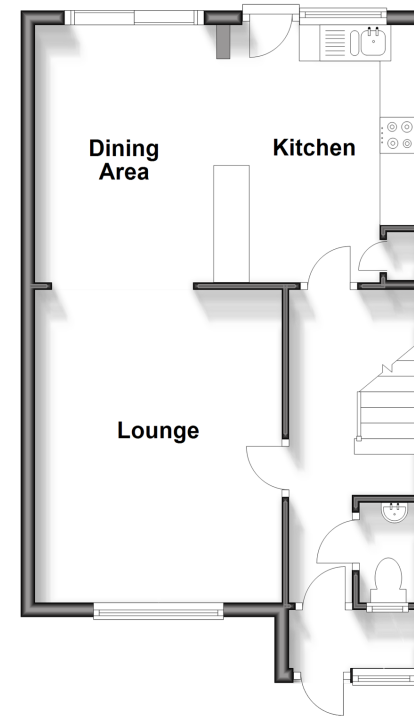
Landing  
Family Bathroom  
Bedroom 1: 11'8 x 8'10 into fitted wardrobes (3.56m x 2.69m)  
Bedroom 2: 12'8 up to fitted wardrobes x 10'9 (3.86m x 3.28m)  
Bedroom 3: 8'9 x 8'7 (2.67m x 2.62m)

### OUTSIDE

Front Garden  
Rear Garden  
Garage En-Bloc  
Allocated Parking

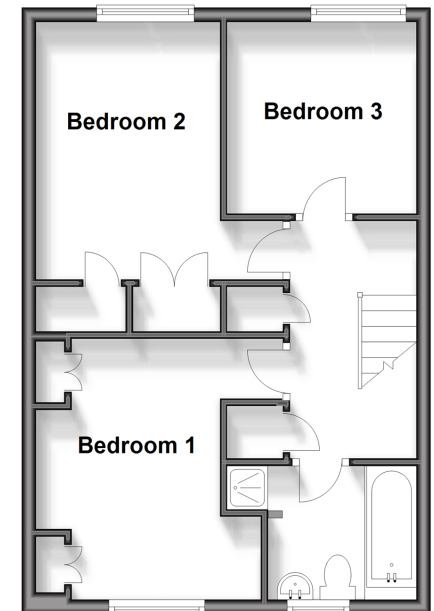
### Ground Floor

Approx. 44.5 sq. metres (478.6 sq. feet)



### First Floor

Approx. 42.8 sq. metres (461.1 sq. feet)



**Call Pulborough - 01798 875151 ■ [cubittandwest.co.uk](http://cubittandwest.co.uk)**

■ Legal advice should be taken to verify fixtures/fittings, planning, alterations and/or lease details  
■ Through a Homewise Home For Life Plan people aged 60+ can secure this property for up to 59% less, by purchasing a Lifetime Lease.

■ Appliances & services are untested, dimensions are approximate and floor plans are not to scale



21406081/20250203/KT/KT