



Price
£320,000

Leasehold

3x  2x  1x 

**The Mews, Skeyne Drive,
Pulborough, West
Sussex, RH20**

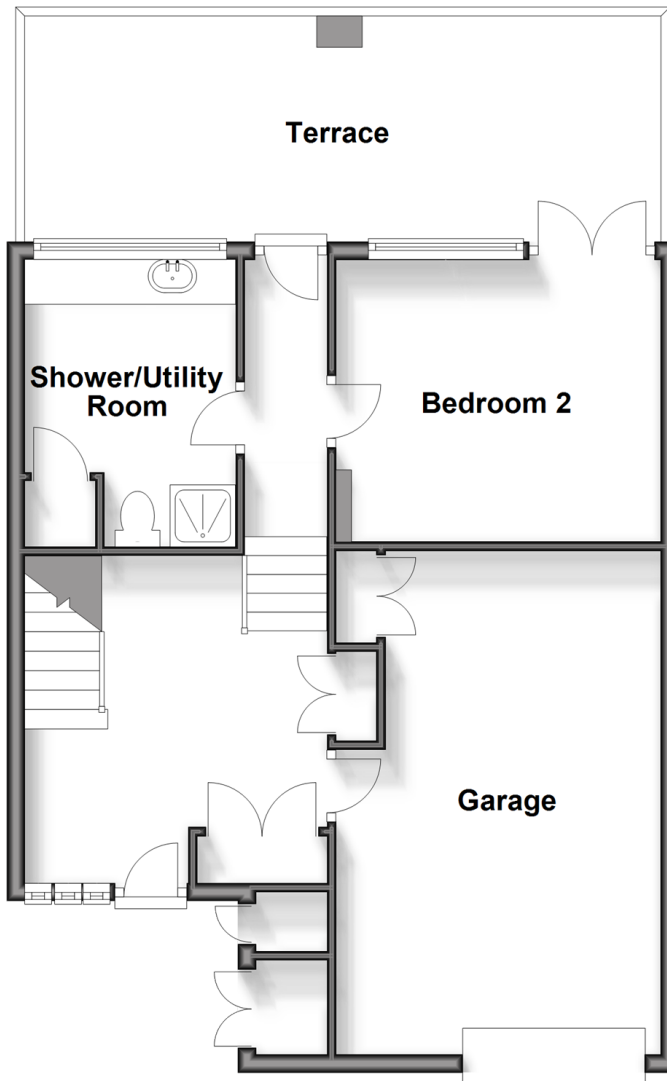
OVER 60?

Secure this property
for up to **59% less!**

cubitt & west
Helping you move forwards

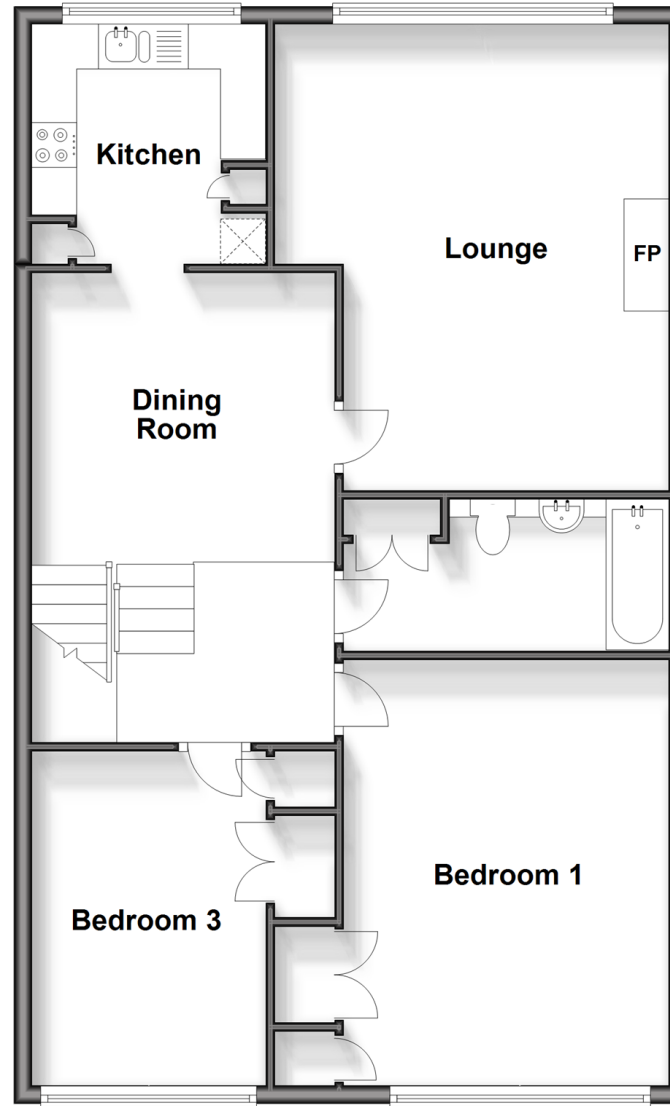
Split Level Ground Floor

Approx. 57.9 sq. metres (623.6 sq. feet)



Split Level First Floor

Approx. 83.8 sq. metres (901.9 sq. feet)



Accommodation

SPLIT LEVEL GROUND FLOOR

Entrance Hall

Shower/Utility Room: 10'2 x 7'6 (3.10m x 2.29m)

Bedroom 2: 11'10 x 10'4 (3.61m x 3.15m)

Terrace

SPLIT LEVEL FIRST FLOOR

Dining Room: 17'2 x 11'0 (5.24m x 3.36m)

Kitchen: 8'9 x 8'6 (2.67m x 2.59m)

Lounge: 16'10 maximum x 11'10 maximum (5.13m x 3.61m)

Bathroom

Bedroom 1: 15'5 x 11'10 up to fitted wardrobes (4.70m x 3.61m)

Bedroom 3: 12'1 x 8'6 up to fitted wardrobes (3.69m x 2.59m)

OUTSIDE

Driveway

Integral Garage: 18'8 x 12'0 (5.69m x 3.66m)

Communal Gardens



Main features

- A wonderfully positioned mid terraced town house
- Beautiful views over the River Arun
- A lovely terrace leading onto the pretty communal gardens
- Gas fired central heating
- Integral garage with a private driveway
- 941 year lease remaining



Nearest Schools

Primary School: St Mary's C of E Primary

Secondary School: The Weald School 4.6 miles



Transport Information

Train Stations:
Pulborough 0.4 miles
Amberley 4.4 miles



Address

The Mews, Skeyne Drive, Pulborough, West Sussex, RH20



Directions

For directions to this property please contact us.



cubitt&west
Helping you move forwards

Call Pulborough Branch 01798 875151 ■ [cubittandwest.co.uk](https://www.cubittandwest.co.uk)



■ Legal advice should be taken to verify fixtures/fittings, planning, alterations and/or lease details ■ Appliances & services are untested, dimensions are approximate and floor plans are not to scale
■ Through a Homewise Home For Life Plan people aged 60+ can secure this property for up to 59% less, by purchasing a Lifetime Lease.



21404902/20250328/CT/JD