



**OVER 60?**

Secure this property  
for up to **59% less!**

**Price**

**£210,000**

**Leasehold**

2x  2x  1x 

**Oddstones, Codmore  
Hill, Pulborough, West  
Sussex, RH20**

**cubitt&west**  
Helping you move forwards





## Main features

- A wonderful spacious apartment with a patio area
- Open plan living
- Allocated parking immediately outside the rear entrance
- Easy access to the supermarkets, school, park and other amenities
- No onward chain

## Accommodation

### GROUND FLOOR

Entrance Hall

Kitchen/Living Room : 21'0 x 12'3  
(6.41m x 3.74m)

Bedroom 1: 14'4 x 9'4 (4.37m x 2.85m)

En-Suite Shower Room

Bathroom

Bedroom 2: 12'3 x 9'5 (3.74m x 2.87m)

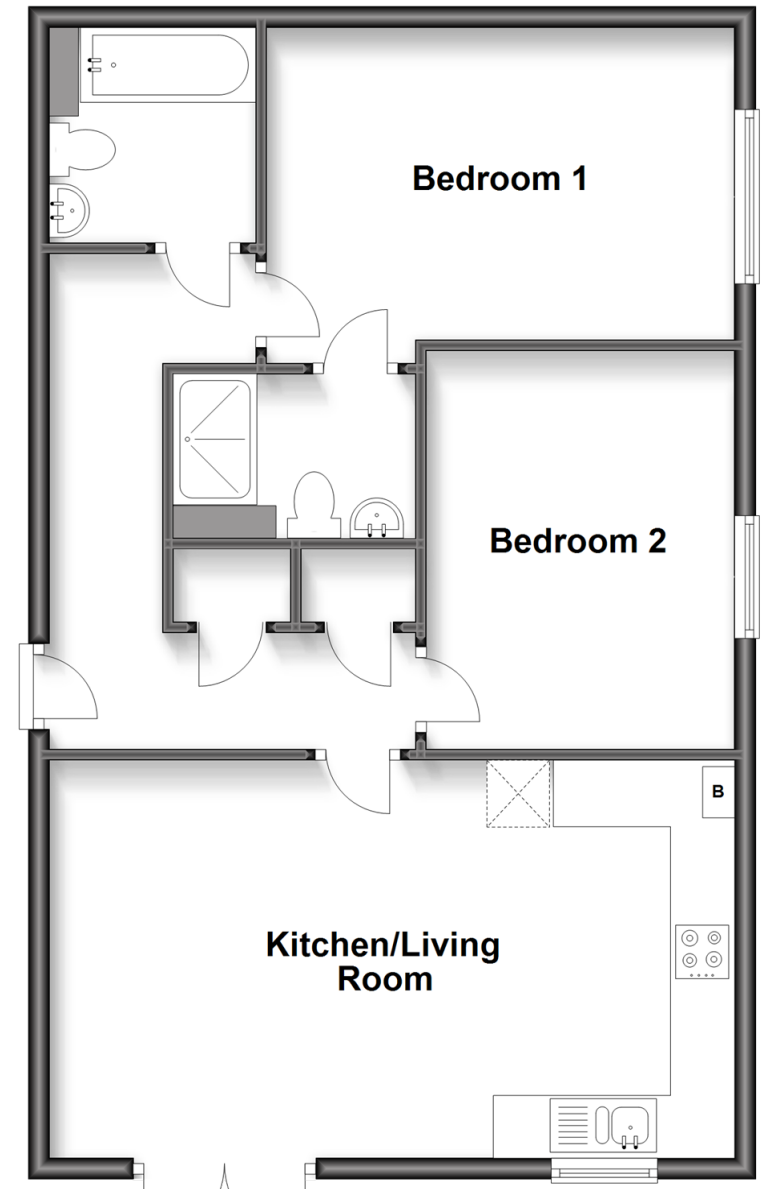
### OUTSIDE

Allocated Parking

Patio Area

## Ground Floor

Approx. 68.1 sq. metres (733.6 sq. feet)



**Call Pulborough - 01798 875151 ■ [cubittandwest.co.uk](http://cubittandwest.co.uk)**

- Legal advice should be taken to verify fixtures/fittings, planning, alterations and/or lease details
- Appliances & services are untested, dimensions are approximate and floor plans are not to scale
- Through a Homewise Home For Life Plan people aged 60+ can secure this property for up to 50% less, by purchasing a Lifetime Lease.



21406049/20250903/KT/JD