

OVER 60?

Secure this property
for up to **59% less!**



Price
£425,000
Freehold

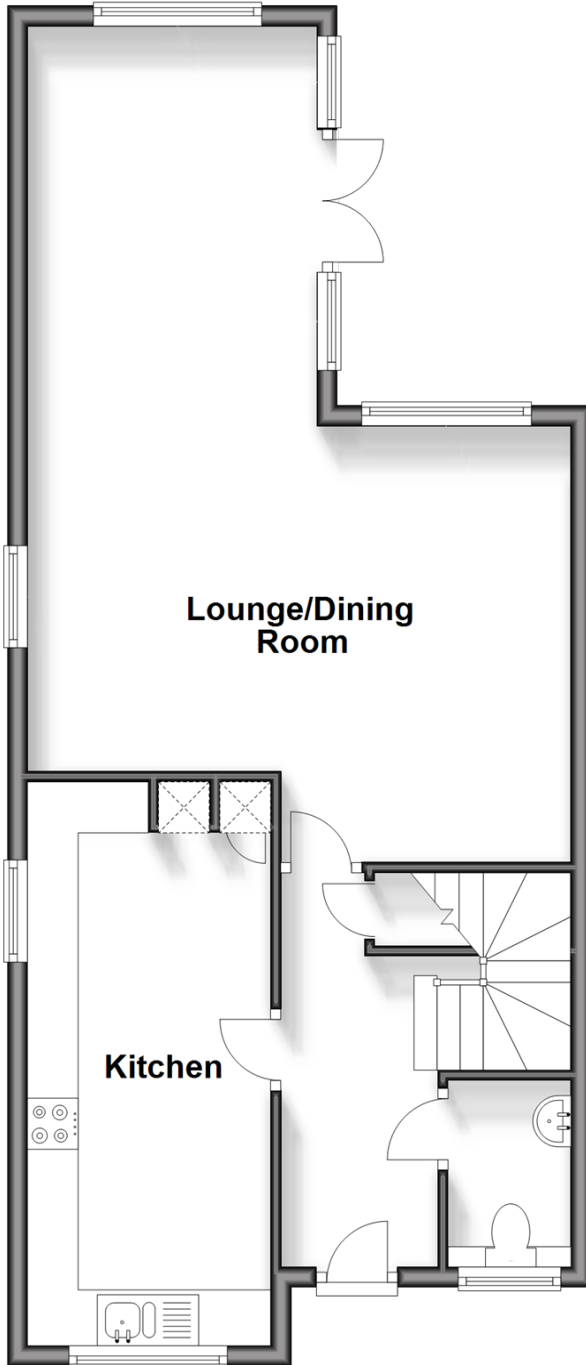
4x  2x  1x 

Corden Place, Codmore Hill, Pulborough,
West Sussex, RH20

cubitt & west
Helping you move forwards

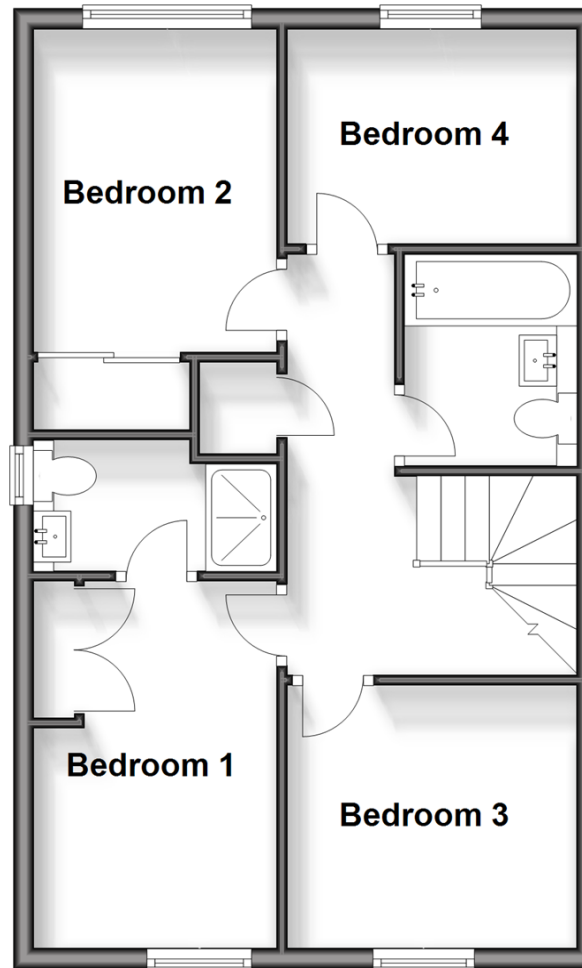
Ground Floor

Approx. 57.3 sq. metres (616.9 sq. feet)



First Floor

Approx. 49.6 sq. metres (534.2 sq. feet)



Accommodation

GROUND FLOOR

Entrance Hall

Cloakroom

Kitchen: 18'2 x 7'10 (5.54m x 2.39m)

Lounge/Dining Room: (L-shaped) 24'0 x 9'10 (7.32m x 3.00m) plus 14'1 x 8'10 (4.30m x 2.69m)

FIRST FLOOR

Landing

Bedroom 1: 12'10 maximum x 8'3 into fitted wardrobes (3.91m x 2.52m)

En-Suite Shower Room

Bedroom 2: 10'4 up to fitted wardrobes x 8'3 (3.15m x 2.52m)

Bedroom 3: 9'4 x 9'1 (2.85m x 2.77m)

Bedroom 4: 9'0 x 6'10 (2.75m x 2.08m)

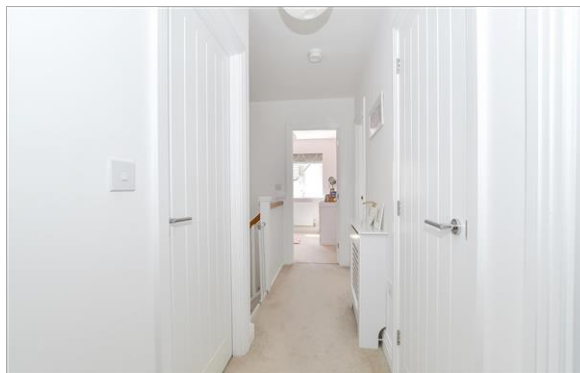
Family Bathroom

OUTSIDE

Front Garden

Rear Garden

Two Allocated Parking Spaces



Main features

- A stunning and spacious home
- Light and airy throughout
- Bedroom one with an en-suite shower room
- 2 Allocated parking spaces
- Mainline train station and bus services nearby
- Primary school within close proximity



Nearest Schools

Primary School: St Mary's C of E Primary 0.4 miles

Secondary School: The Weald School 4.1 miles



Transport Information

Train Stations: Pulborough 0.7 miles, Billingshurst 4.1 miles



Address

Corden Place, Codmore Hill, Pulborough, West Sussex, RH20



Directions

For directions to this property please contact us.



cubitt&west
Helping you move forwards

Call Pulborough Branch 01798 875151 ■ [cubittandwest.co.uk](https://www.cubittandwest.co.uk)



■ If buying to let, the energy rating will need to be improved to at least 'E' rating before you can let the property
■ Appliances & services are untested, dimensions are approximate and floor plans are not to scale

■ Legal advice should be taken to verify fixtures/fittings, planning, alterations and/or lease details
■ Through a Homewise Home For Life Plan people aged 60+ can secure this property for up to 59% less, by purchasing a Lifetime Lease.

21405930/20240919/TMW/JD