



Price

£340,000

Freehold

4x  1x  2x 

Willow Walk, Petworth,
West Sussex, GU28

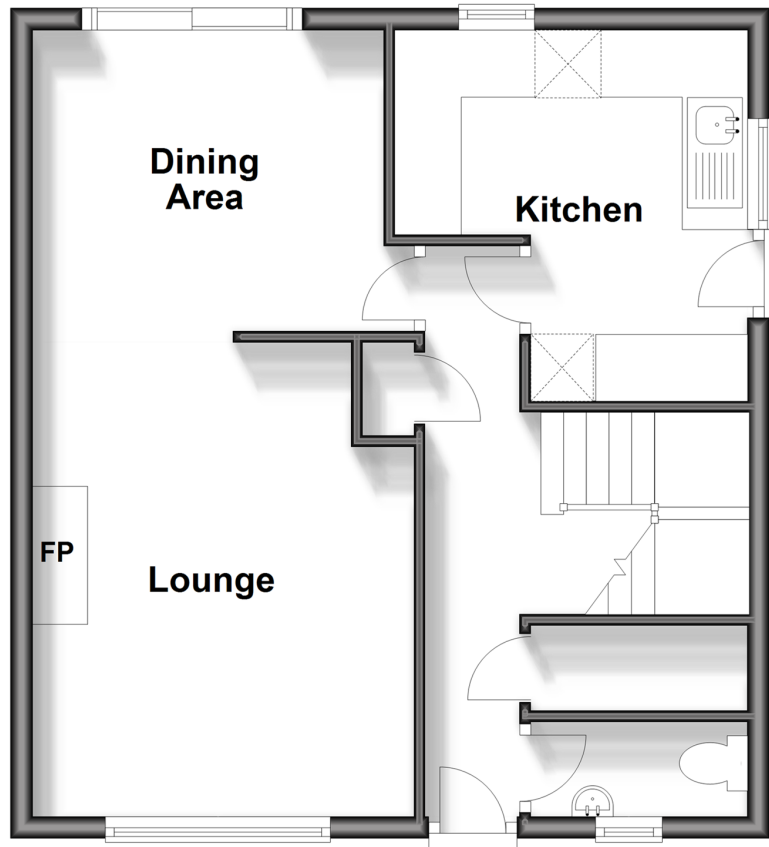
OVER 60?

Secure this property
for up to **59% less!**

cubitt & west
Helping you move forwards

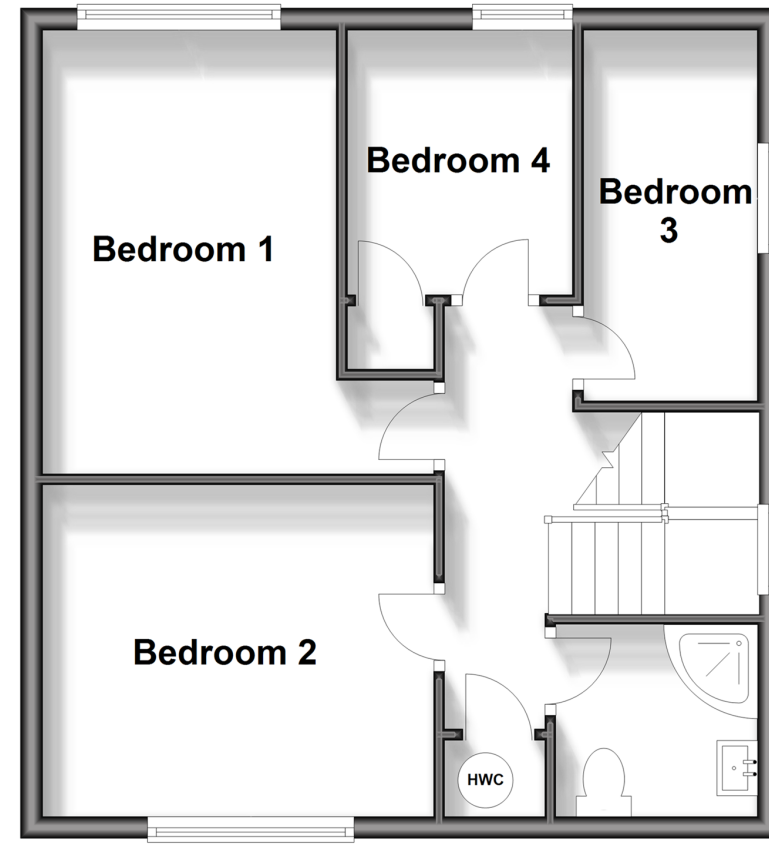
Ground Floor

Approx. 46.3 sq. metres (497.9 sq. feet)



First Floor

Approx. 47.0 sq. metres (505.9 sq. feet)



Accommodation

GROUND FLOOR

Entrance Hall

Cloakroom

Lounge: 14'1 maximum x 11'4 maximum (4.30m x 3.46m)

Dining Area: 10'4 x 9'0 (3.15m x 2.75m)

Kitchen: 10'8 x 10'8 (3.25m x 3.25m) narrowing to 6'5 x 5'10 (1.96m x 1.78m)

FIRST FLOOR

Landing

Bedroom 1: 13'7 x 8'8 (4.14m x 2.64m)

Bedroom 2: 11'7 x 9'10 (3.53m x 3.00m)

Bedroom 3: 10'8 x 5'11 (3.25m x 1.80m)

Bedroom 4: 7'10 up to fitted wardrobes x 6'8 (2.39m x 2.03m)

Shower Room

OUTSIDE

Front Garden

Rear Garden



Main features

- A wonderful end of terrace house
- Private front and rear gardens
- Ground floor cloakroom
- Close to Petworth National Trust house and park
- Walking distance into the town with an abundance of cafes, restaurants, boutiques and antiques shops, and other day-to-day amenities

Nearest Schools

Primary School: Petworth CofE School 0.5 miles

Secondary School: Midhurst Rother College 6.6 miles.

Transport Information

Train Stations: Pulborough 4.6 miles, Amberley 6.6 miles

Address

Willow Walk, Petworth, West Sussex, GU28

Directions

For directions to this property please contact us.



cubitt&west
Helping you move forwards

Call Pulborough Branch 01798 875151 ■ cubittandwest.co.uk



- Legal advice should be taken to verify fixtures/fittings, planning, alterations and/or lease details
- Appliances & services are untested, dimensions are approximate and floor plans are not to scale
- Through a Homewise Home For Life Plan people aged 60+ can secure this property for up to 59% less, by purchasing a Lifetime Lease.

EPC RATING

CURRENT:	POTENTIAL:
D(55)	B(33)

21405893/20240531/KT/JD