



Price
£105,000

Freehold

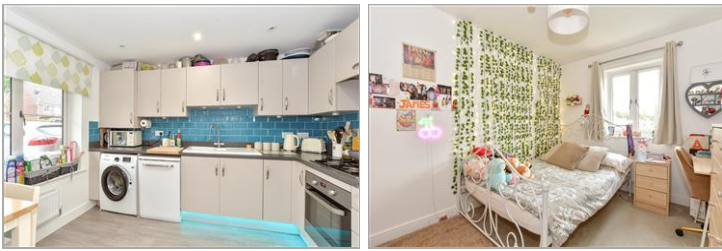
3x  1x  1x 

**Poplar Close, Liphook,
Hampshire, GU30**

OVER 60?

Secure this property
for up to **59% less!**

cubitt & west
Helping you move forwards



Main features

- Offered for sale at 25% share of market value
- Lovely cul-de-sac location
- Private rear garden
- Property is less than 5 years old
- Remaining 75% share managed by Vivid

Accommodation

GROUND FLOOR

Entrance Hall

Lounge: 15'4 x 12'7 (4.68m x 3.84m)

Cloakroom

Kitchen: 11'7 x 8'4 (3.53m x 2.54m)

FIRST FLOOR

Landing

Bedroom 1: 13'4 x 12'6 (4.07m x 3.81m)

Bedroom 2: 11'4 x 9'9 (3.46m x 2.97m)

Bedroom 3: 11'4 x 6'3 (3.46m x 1.91m)

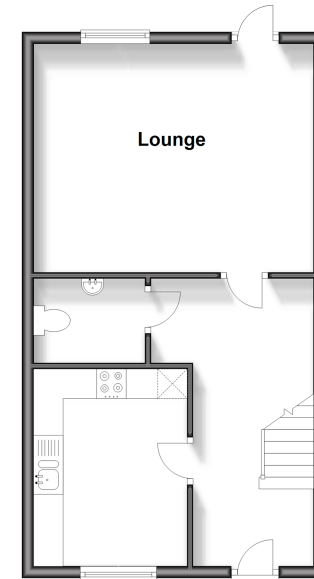
Bathroom

OUTSIDE

Rear Garden

Off Road Parking

Ground Floor
Approx. 41.9 sq. metres (450.6 sq. feet)



First Floor
Approx. 41.9 sq. metres (450.6 sq. feet)



Call Petersfield - 01730 262931 ■ cubittandwest.co.uk

- Legal advice should be taken to verify fixtures/fittings, planning, alterations and/or lease details
- Appliances & services are untested, dimensions are approximate and floor plans are not to scale
- Through a Homewise Home For Life Plan people aged 60+ can secure this property for up to 59% less, by purchasing a Lifetime Lease.



23316723/20241014/YH/YH