



Price

£105,000

Leasehold

3x  1x  1x 

Poplar Close, Liphook,
Hampshire, GU30

cubitt & west
Helping you move forwards



Main features

- Offered for sale at 25% share of the market value
- Remaining 75% share managed by Vivid
- Property is less than 5 years old
- Off road parking
- Lovely cul-de-sac location
- Private rear garden

Accommodation

GROUND FLOOR

Entrance Hall

Lounge: 15'4 x 12'7 (4.68m x 3.84m)

Kitchen: 11'1 x 8'4 (3.38m x 2.54m)

W.C.

FIRST FLOOR

Landing

Bedroom 1: 13'1 x 11'10 (3.99m x 3.61m)

Bedroom 2: 11'3 x 8'9 (3.43m x 2.67m)

Bedroom 3: 11'4 x 6'3 (3.46m x 1.91m)

Bathroom

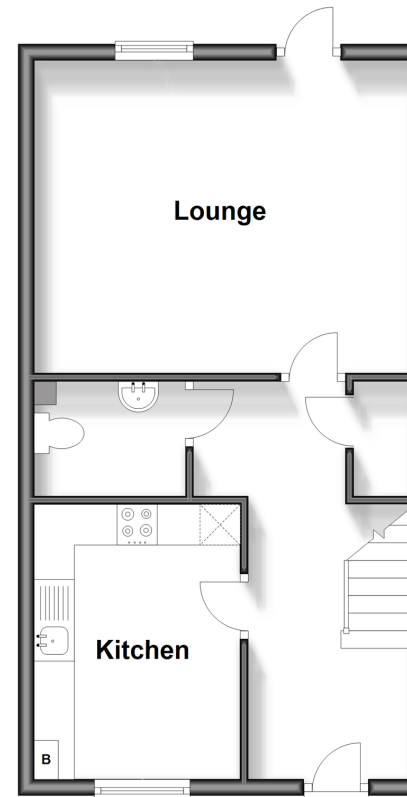
OUTSIDE

Rear Garden

Off Road Parking

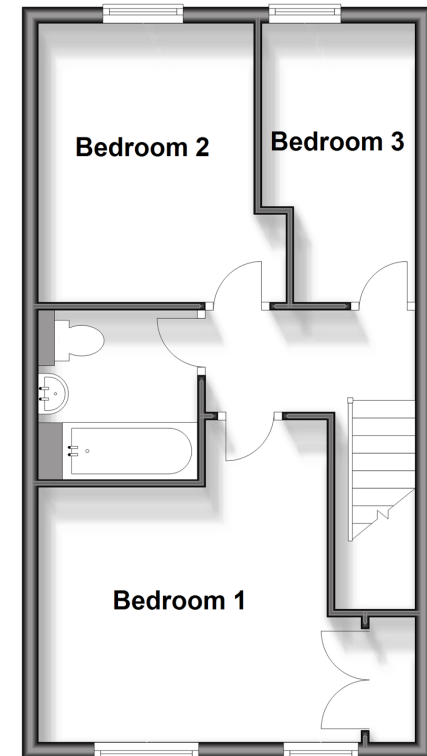
Ground Floor

Approx. 41.5 sq. metres (446.6 sq. feet)



First Floor

Approx. 41.5 sq. metres (446.6 sq. feet)



Call Petersfield - 01730 262931 ■ cubittandwest.co.uk

- Legal advice should be taken to verify fixtures/fittings, planning, alterations and/or lease details
- Appliances & services are untested, dimensions are approximate and floor plans are not to scale



23316687/20240220/JT/SA