



Price
£295,000

Freehold

3x  1x  2x 

**Rival Moor Road,
Petersfield, Hampshire,
GU31**

OVER 60?

Secure this property
for up to **59% less!**

cubitt & west
Helping you move forwards



Main features

- Low maintenance sunny aspect garden
- Light and airy lounge
- Flexible living accommodation
- Some modernisation required
- Easy access to Petersfield town centre

Accommodation

GROUND FLOOR

Entrance Hall

Lounge: 13'5 x 11'2 (4.09m x 3.41m)

Kitchen: 11'1 x 8'6 (3.38m x 2.59m)

Dining Room/used as Bedroom: 12'2 x 11'0 (3.71m x 3.36m)

W.C.

FIRST FLOOR

Landing

Bedroom 1: 13'4 x 10'11 (4.07m x 3.33m)

Bedroom 2: 11'4 x 10'4 (3.46m x 3.15m)

Bedroom 3/used as Kitchen: 11'2 x 8'6 (3.41m x 2.59m)

Wet Room

OUTSIDE

Front Garden

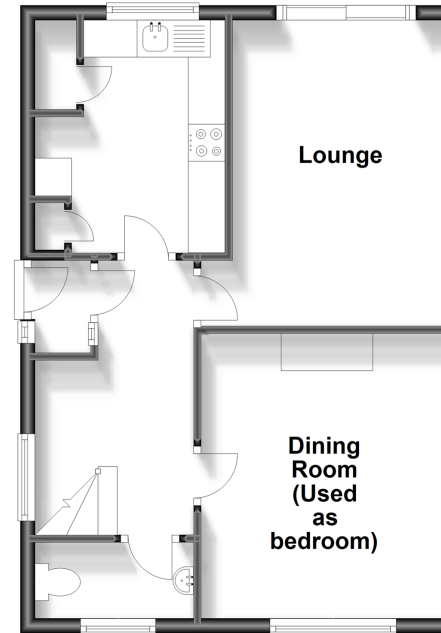
Rear Garden

Call Petersfield - 01730 262931 ■ cubittandwest.co.uk

- Legal advice should be taken to verify fixtures/fittings, planning, alterations and/or lease details
- Appliances & services are untested, dimensions are approximate and floor plans are not to scale
- Through a Homewise Home For Life Plan people aged 60+ can secure this property for up to 59% less, by purchasing a Lifetime Lease.

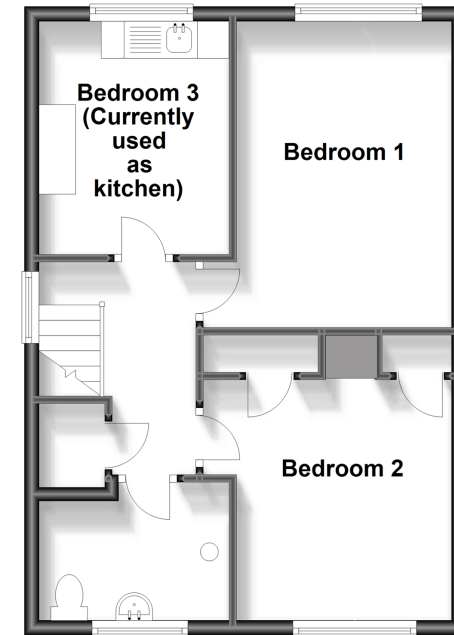
Ground Floor

Approx. 45.5 sq. metres (489.5 sq. feet)



First Floor

Approx. 45.5 sq. metres (489.5 sq. feet)



23316620/20231130/SA/SA