



Price
£385,000

Freehold

4x  2x  1x 

**Kestrel Close,
Waterlooville,
Hampshire, PO8**

OVER 60?

Secure this property
for up to **59% less!**

cubitt&west
Helping you move forwards



Main features

- **Garage and driveway parking**
- **Spacious accommodation throughout**
- **Well maintained private garden to rear**
- **Modern fitted kitchen**
- **Cul-de-sac location**
- **Viewing highly recommended**

Accommodation

GROUND FLOOR

Entrance Hall

Lounge/Dining Area: 21'8 x 11'1 (6.61m x 3.38m)

Kitchen: 14'1 x 13'1 (4.30m x 3.99m)

Shower Room

Guest Bedroom: 13'1 x 10'6 (3.99m x 3.20m)

FIRST FLOOR

Landing

Bedroom 1: 13'9 x 11'1 (4.19m x 3.38m)

Bedroom 2: 11'1 x 10'6 (3.38m x 3.20m)

Bedroom 3: 8'6 x 7'1 (2.59m x 2.16m)

Bathroom

OUTSIDE

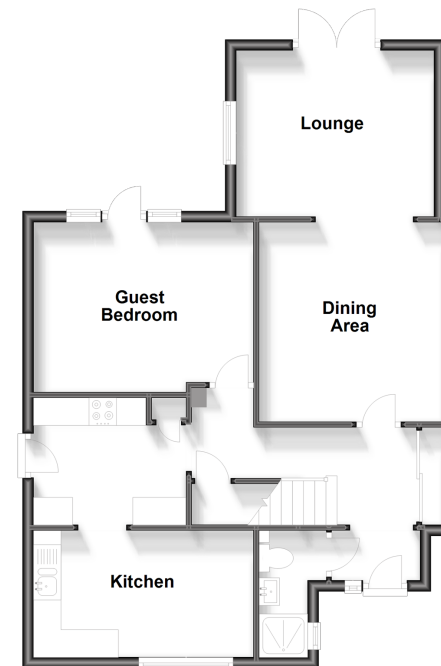
Rear Garden

Garage and Off Road Parking

Call Petersfield - 01730 262931 ■ cubittandwest.co.uk

- Legal advice should be taken to verify fixtures/fittings, planning, alterations and/or lease details
- Appliances & services are untested, dimensions are approximate and floor plans are not to scale
- Through a Homewise Home For Life Plan people aged 60+ can secure this property for up to 59% less, by purchasing a Lifetime Lease.

Ground Floor
Approx. 66.2 sq. metres (713.1 sq. feet)



First Floor
Approx. 40.9 sq. metres (440.1 sq. feet)

