

OVER 60?

You could get up to
59% off the price!*



Video Tour available

Price

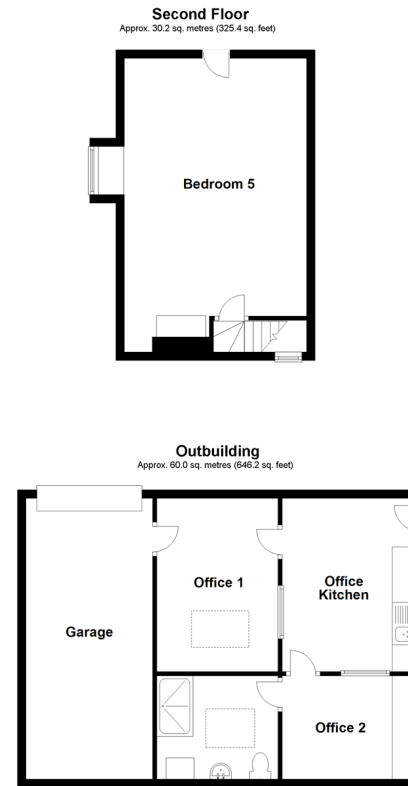
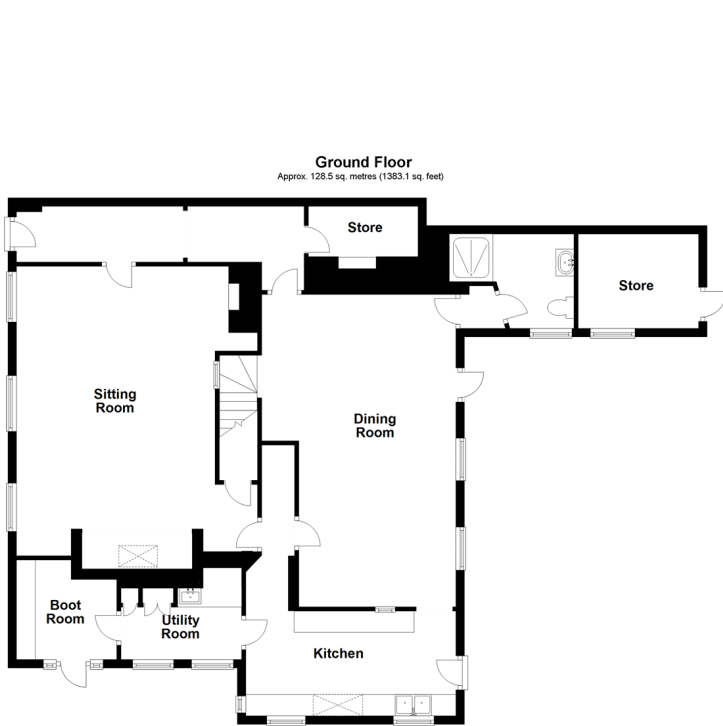
£850,000

Freehold

5x  2x  2x 

Barcombe Mills, Barcombe, East Sussex,
BN8

cubitt&west
Helping you move forwards



Accommodation

GROUND FLOOR

Hallway

Cloakroom

Shower Room

Sitting Room: 22'2 x 18'0 (6.76m x 5.49m)

Dining Room: 23'7 x 15'0 (7.19m x 4.58m)

Kitchen: 16'0 x 8'0 (4.88m x 2.44m)

Utility Room

External Larder/Cold Store: 9'5 x 7'9 (2.87m x 2.36m)

Boot Room

EXTERNAL OFFICE SPACE

Office 1: 13'4 x 9'5 (4.07m x 2.87m)

Office 2: 9'9 x 8'0 (2.97m x 2.44m)

Office Kitchen: 13'4 x 10'1 (4.07m x 3.08m)

Office Shower Room

FIRST FLOOR

Landing

Cloakroom 2

Bedroom 1: 15'8 x 13'5 into wardrobe (4.78m x 4.09m)

Bedroom 2: 15'8 x 10'10 into wardrobe (4.78m x 3.30m)

Bedroom 3: 14'2 x 12'1 (4.32m x 3.69m)

Bedroom 4: 12'1 x 8'2 (3.69m x 2.49m)

Bathroom

SECOND FLOOR

Landing

Bedroom 5: 22'0 x 12'0 (6.71m x 3.66m)



Main features

- Video walk through available
- A stunning property dating back to 17th Century
- Character features including inglenook fireplace & beams
- Barcombe itself provides a post office, primary school & village hall with many community events
- Private grounds



Nearest Schools

Primary Schools: Barcombe C of E Primary 1.0 miles, Ringmer Primary 2.0 miles, Hamsey Community Primary 2.1 miles. Secondary Schools: Ringmer Community College 1.9 miles, Chailey School 3.2 miles, Lewes Old Grammar School 3.3 miles



Transport Information

Train Stations: Cooksbridge 2.2 miles, Lewes 3.3 miles, Plumpton 4.2 miles



Address

Barcombe Mills, Barcombe, East Sussex, BN8



Directions

For directions to this property please contact us.



cubitt&west
Helping you move forwards

Call Lewes Branch (01273) 471231 ■ [cubittandwest.co.uk](https://www.cubittandwest.co.uk)



■ Legal advice should be taken to verify fixtures/fittings, planning, alterations and/or lease details ■ Appliances & services are untested, dimensions are approximate and floor plans are not to scale
■ Our Homewise partnership offer a 'Home for Life' plan to buyers over 60, granting a lifetime lease for your protection and reducing the purchase price by up to 59%



23007987/20210312/RS/RS