



Price
£570,000

Freehold

4x  3x  1x 

**Lakeside, South Chailey,
East Sussex, BN8**

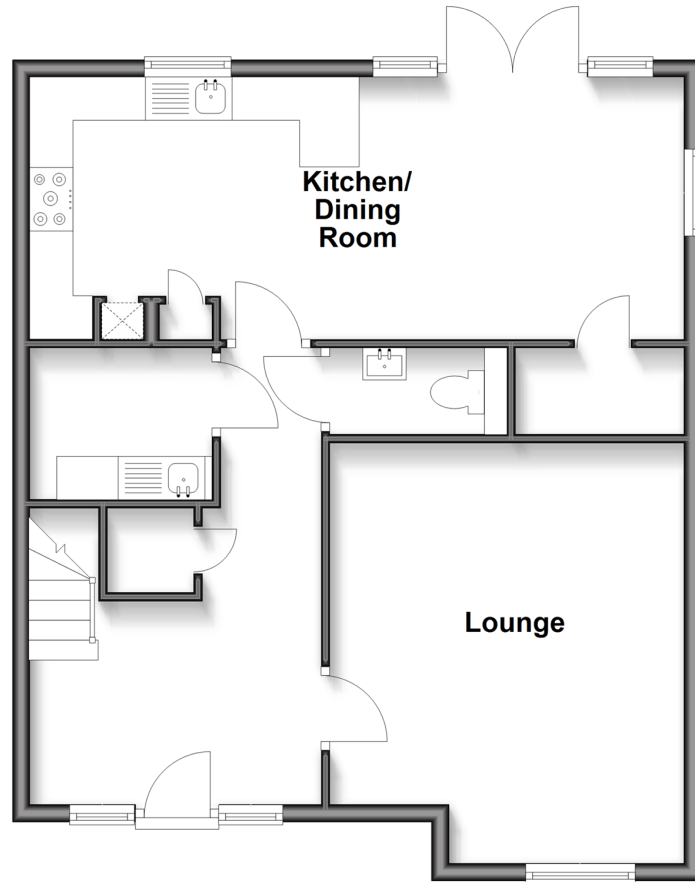
OVER 60?

Secure this property
for up to **59% less!**

cubitt&west
Helping you move forwards

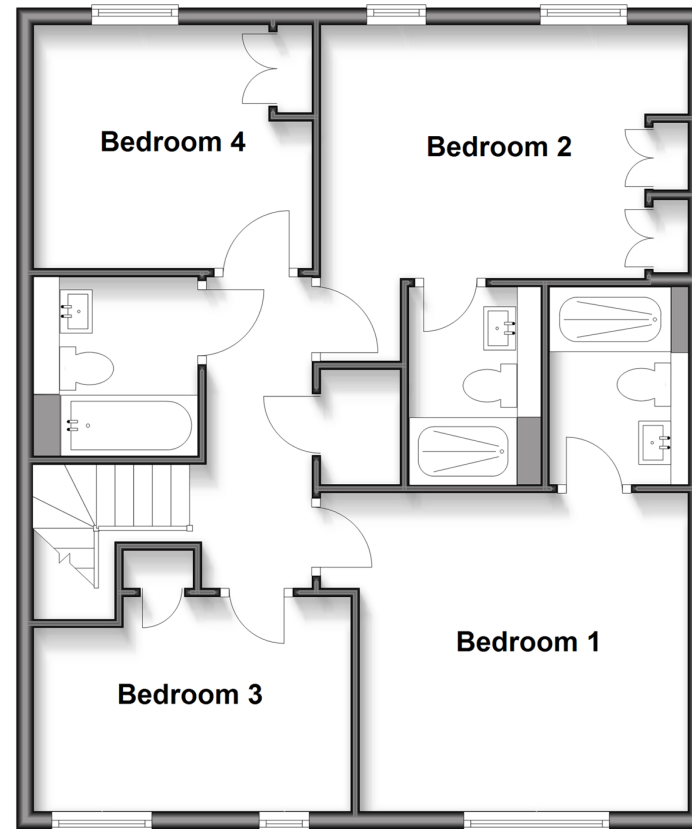
Ground Floor

Approx. 65.1 sq. metres (700.6 sq. feet)



First Floor

Approx. 68.4 sq. metres (735.9 sq. feet)



Accommodation

GROUND FLOOR

Entrance Hall

Cloakroom

Utility Room: 6'6 x 6'0 (1.98m x 1.83m)

Lounge: 15'9 into bay x 13'2 (4.80m x 4.02m)

Kitchen/Dining Room: 24'4 x 9'10 (7.42m x 3.00m)

FIRST FLOOR

Landing

Bedroom 1: 13'4 x 12'2 (4.07m x 3.71m)

Ensuite Shower Room

Bedroom 2: 13'4 x 12'1 (4.07m x 3.69m)

Ensuite Shower Room

Bedroom 3: 10'7 x 9'0 (3.23m x 2.75m)

Bedroom 4: 11'8 x 8'4 (3.56m x 2.54m)

Bathroom

OUTSIDE

Front & Rear Gardens

Garage & Driveway



Main features

- A spacious, well presented home
- Built in 2022 by luxury home builder Antler Homes Plc
- Well appointed kitchen/dining room with garden access
- Access to residents only private woodland & lake
- Garage & driveway with EV charging point



Nearest Schools

Primary Schools: Barcombe C of E Primary 1.3 miles, Hamsey Community Primary 1.5 miles, Plumpton Primary 2.1 miles. Secondary Schools: Chailey School 1.1 miles, Chailey Heritage School 3.2 miles, Lewes Old Grammar School 3.8 miles



Transport Information

Train Stations: Cooksbridge 1.7 miles, Plumpton 2.0 miles, Lewes 3.9 miles



Address

Lakeside, South Chailey, East Sussex, BN8



Directions

For directions to this property please contact us.



cubitt&west
Helping you move forwards

Call Lewes Branch 01273 471231 ■ cubittandwest.co.uk



■ Legal advice should be taken to verify fixtures/fittings, planning, alterations and/or lease details ■ Appliances & services are untested, dimensions are approximate and floor plans are not to scale
■ Through a Homewise Home For Life Plan people aged 60+ can secure this property for up to 59% less, by purchasing a Lifetime Lease.



22824048/20250227/****/CB