

OVER 60?

Secure this property
for up to **59% less!**



Price

£490,000

Freehold

3x  2x  1x 

Orchard Road, Lewes, East Sussex, BN7

cubitt&west
Helping you move forwards



Main features

- Beautifully presented home in the Malling area
- Kitchen/living room provides excellent family space
- Good size rear garden
- Conveniently located for local shopping facilities
- Close to primary school and large green spaces

Accommodation

GROUND FLOOR

Hallway

Kitchen/Living Room: 17'9 x 16'5 (5.41m x 5.01m)

Conservatory: 13'3 x 7'6 (4.04m x 2.29m)

Bedroom 3: 16'0 x 10'5 (4.88m x 3.18m)

Bathroom

FIRST FLOOR

Landing

Bedroom 1: 13'11 x 11'5 (4.24m x 3.48m)

Bedroom 2: 13'5 x 7'5 (4.09m x 2.26m)

Shower Room

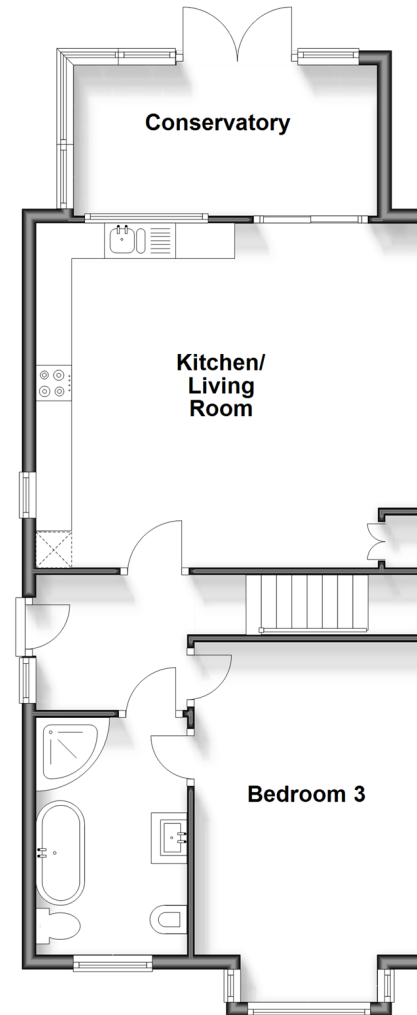
OUTSIDE

Front & Rear Gardens

Garage

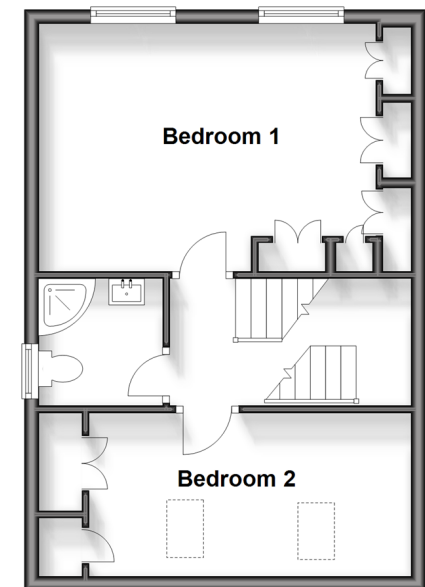
Ground Floor

Approx. 66.6 sq. metres (716.6 sq. feet)



First Floor

Approx. 40.6 sq. metres (437.1 sq. feet)



Call Lewes - (01273) 471231 ■ cubittandwest.co.uk

- Legal advice should be taken to verify fixtures/fittings, planning, alterations and/or lease details
- Appliances & services are untested, dimensions are approximate and floor plans are not to scale
- Through a Homewise Home For Life Plan people aged 60+ can secure this property for up to 59% less, by purchasing a Lifetime Lease.



23009021/20250201/JL1/CB