



Price
£660,000

Freehold

3x  1x  2x 

**Nevill Crescent, Lewes,
East Sussex, BN7**

OVER 60?

Secure this property
for up to **59% less!**

cubitt&west
Helping you move forwards



Main features

- **Lovely extended family home**
- **Located in the popular Nevill area of this historic county town**
- **Overlooking the green & walking distance to local shop & schools**
- **Close to bus route into town or Brighton**
- **Nearby walks into countryside along the South Downs**

Accommodation

GROUND FLOOR

Hallway

Lounge: 15'2 x 10'9 (4.63m x 3.28m)

Study: 12'10 x 10'5 (3.91m x 3.18m)

Kitchen: 15'2 x 9'9 (4.63m x 2.97m)

Dining Area: 12'5 x 8'6 (3.79m x 2.59m)

Utility Room: 7'0 x 4'6 (2.14m x 1.37m)

Cloakroom

FIRST FLOOR

Landing

Bedroom 1: 15'2 x 11'0 (4.63m x 3.36m)

Bedroom 2: 12'2 x 10'7 (3.71m x 3.23m)

Bedroom 3: 9'5 x 9'0 (2.87m x 2.75m)

Bathroom

OUTSIDE

Front & Rear Gardens

Office

Summerhouse

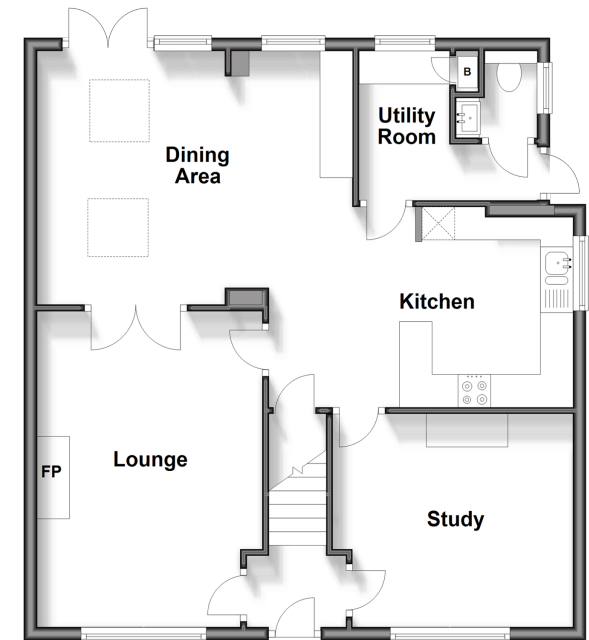
Driveway

Call Lewes - (01273) 471231 ■ cubittandwest.co.uk

- Legal advice should be taken to verify fixtures/fittings, planning, alterations and/or lease details
- Appliances & services are untested, dimensions are approximate and floor plans are not to scale
- Through a Homewise Home For Life Plan people aged 60+ can secure this property for up to 59% less, by purchasing a Lifetime Lease.

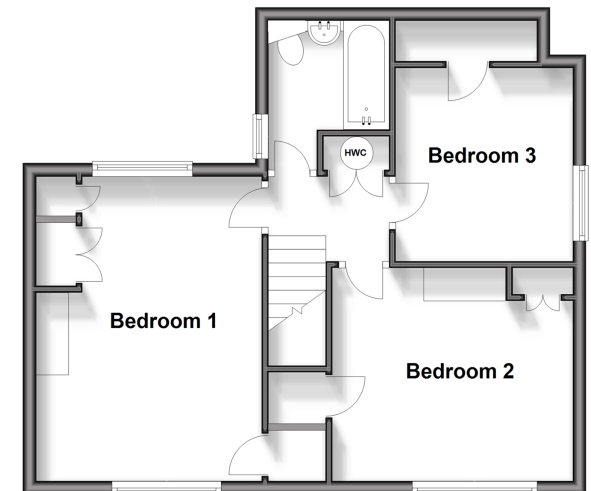
Ground Floor

Approx. 70.3 sq. metres (756.5 sq. feet)



First Floor

Approx. 48.7 sq. metres (524.0 sq. feet)



23008059/20250308/JL1/CB