



**OVER 60?**

Secure this property  
for up to **59% less!**

**Price**

**£400,000**

**Leasehold**

2x  2x  1x 

**Greyfriars Court, Court Road, Lewes, East  
Sussex, BN7**

**cubitt & west**  
Helping you move forwards



## Main features

- Modernised first floor assisted living apartment
- Light and airy accommodation
- Communal areas and activities are available
- Delightful communal garden and car park
- Offered for sale with the benefit of no onward chain

## Accommodation

### FIRST FLOOR

#### Hallway

Lounge: 14'8 x 10'0 (4.47m x 3.05m)

Dining Area: 8'1 x 6'11 (2.47m x 2.11m)

Kitchen: 10'6 x 6'6 (3.20m x 1.98m)

Bedroom 1: 14'7 x 8'10 (4.45m x 2.69m)

#### Ensuite Bathroom

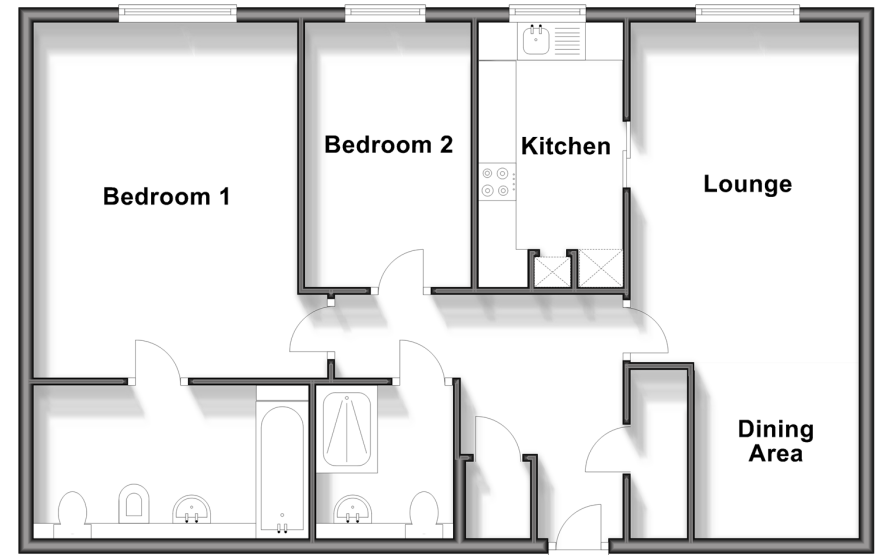
Bedroom 2: 10'9 x 7'2 (3.28m x 2.19m)

#### Wet Room

### OUTSIDE

#### Communal Gardens

**First Floor**  
Approx. 75.1 sq. metres (808.0 sq. feet)



**Call Lewes - (01273) 471231 ■ [cubittandwest.co.uk](http://cubittandwest.co.uk)**

- Legal advice should be taken to verify fixtures/fittings, planning, alterations and/or lease details
- Appliances & services are untested, dimensions are approximate and floor plans are not to scale
- Through a Homewise Home For Life Plan people aged 60+ can secure this property for up to 59% less, by purchasing a Lifetime Lease.



23008908/20240620/JL1/CB