

OVER 60?

Secure this property
for up to **59% less!**



Price

£700,000

Freehold

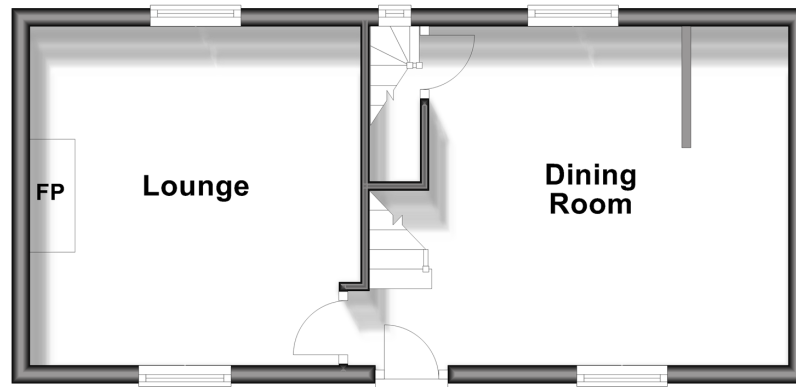
3x  2x  2x 

New Road, Lewes, East Sussex, BN7

cubitt&west
Helping you move forwards

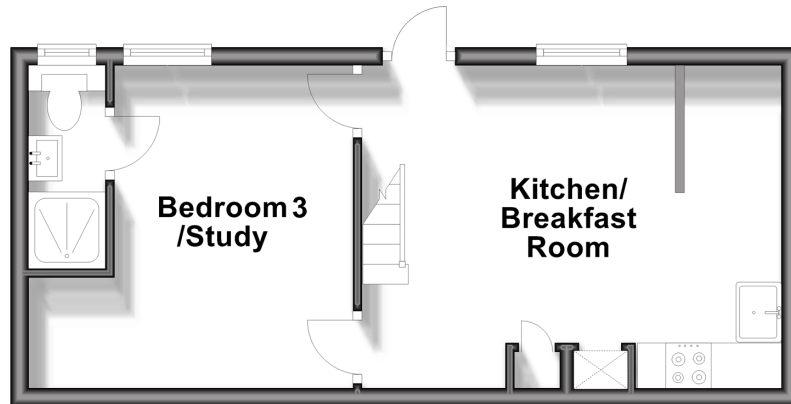
Ground Floor

Approx. 31.4 sq. metres (338.3 sq. feet)



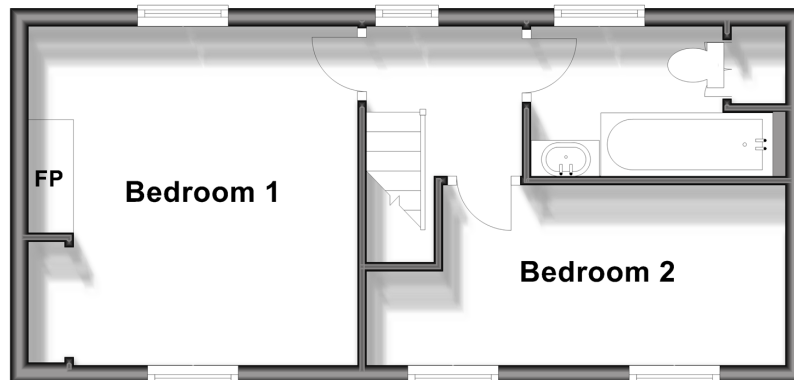
Lower Ground Floor

Approx. 29.7 sq. metres (319.2 sq. feet)



First Floor

Approx. 31.4 sq. metres (337.6 sq. feet)



Accommodation

GROUND FLOOR

Dining Room: 15'11 x 12'1 (4.85m x 3.69m)

Lounge: 12'2 x 12'2 (3.71m x 3.71m)

LOWER GROUND FLOOR

Kitchen/Breakfast Room: 12'6 maximum x 11'2 (3.81m x 3.41m)

Bedroom 3/Study: 11'2 x 8'6 (3.41m x 2.59m)

Ensuite Shower Room

FIRST FLOOR

Landing

Bedroom 1: 12'2 x 12'1 (3.71m x 3.69m)

Bedroom 2: 15'1 x 6'4 (4.60m x 1.93m)

Bathroom

OUTSIDE

Rear Garden



Main features

- Double fronted terraced house in the heart of this historic town
- Located on a quiet, no-through road
- Views to the front of Lewes Castle
- Panoramic views to the rear of 'The Paddock'
- Period features including open fireplace in the lounge & fireplace in the main bedroom



Nearest Schools

Primary Schools: St Pancras Catholic Primary 0.5 miles, Southover CofE Primary 0.6 miles, Western Road Community Primary 0.7 miles
Secondary Schools: Lewes Old Grammar School 0.2 miles, Priory School 0.9 miles, Owlswick School 1.6 miles



Transport Information

Train Stations: Lewes 0.5 miles, Cooksbridge 2.9 miles, Glynde 4.2 miles



Address

New Road, Lewes, East Sussex, BN7



Directions

For directions to this property please contact us.



cubitt&west
Helping you move forwards

Call Lewes Branch (01273) 471231 ■ cubittandwest.co.uk



- If buying to let, the energy rating will need to be improved to at least 'E' rating before you can let the property
- Appliances & services are untested, dimensions are approximate and floor plans are not to scale

- Legal advice should be taken to verify fixtures/fittings, planning, alterations and/or lease details
- Through a Homewise Home For Life Plan people aged 60+ can secure this property for up to 59% less, by purchasing a Lifetime Lease.

23003023/20240319/JL1/TW