



Price

£245,000

Leasehold

2x  1x  1x 

**Malling Close, Lewes,
East Sussex, BN7**

OVER 60?

Secure this property
for up to **59% less!**

cubitt&west
Helping you move forwards



Main features

- Located in the popular Malling area
- Close to local shop & green spaces
- Ideal for first time buyers or investors
- Fantastic private garden
- Modern kitchen & bathroom
- Transport links and walks along the river nearby
- External shed for storage

Accommodation

GROUND FLOOR

Hallway

Lounge: 15'0 x 14'6 (4.58m x 4.42m)

Kitchen: 11'4 x 6'8 (3.46m x 2.03m)

Bedroom 1: 12'4 x 10'10 (3.76m x 3.30m)

Bedroom 2: 10'4 x 9'8 (3.15m x 2.95m)

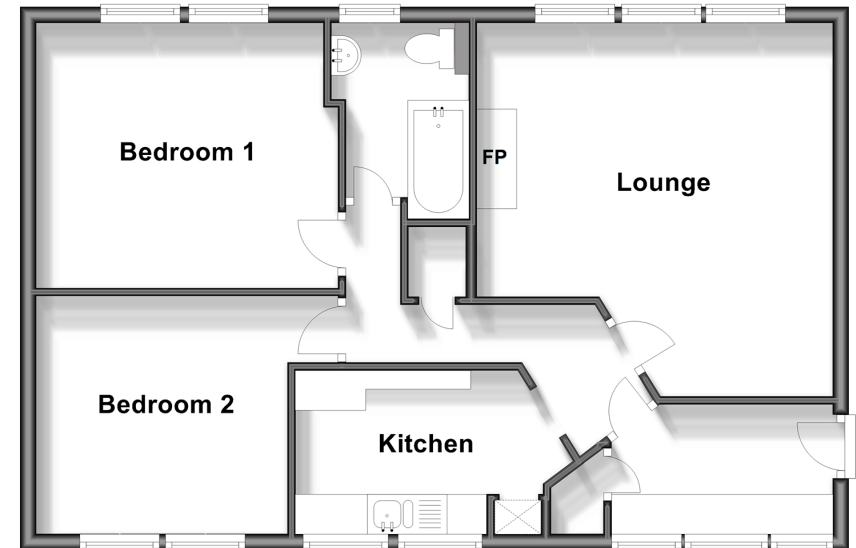
Bathroom

OUTSIDE

Rear Garden

Ground Floor

Approx. 64.4 sq. metres (692.8 sq. feet)



Call Lewes - (01273) 471231 ■ cubittandwest.co.uk

- Legal advice should be taken to verify fixtures/fittings, planning, alterations and/or lease details
- Appliances & services are untested, dimensions are approximate and floor plans are not to scale
- Through a Homewise Home For Life Plan people aged 60+ can secure this property for up to 59% less, by purchasing a Lifetime Lease.



23005988/20240109/TW/DGK