



Price

£500,000

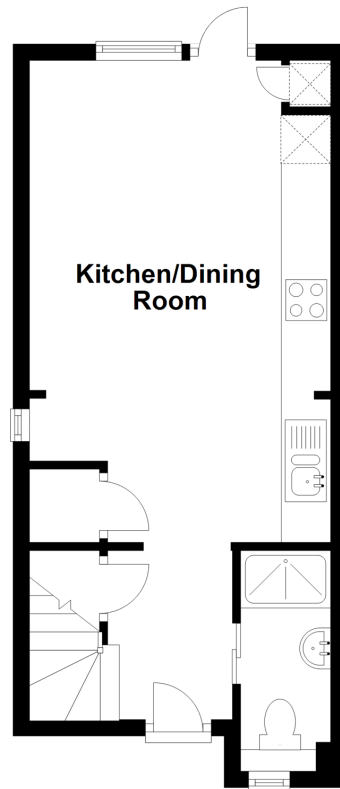
Freehold

3x  2x  1x 

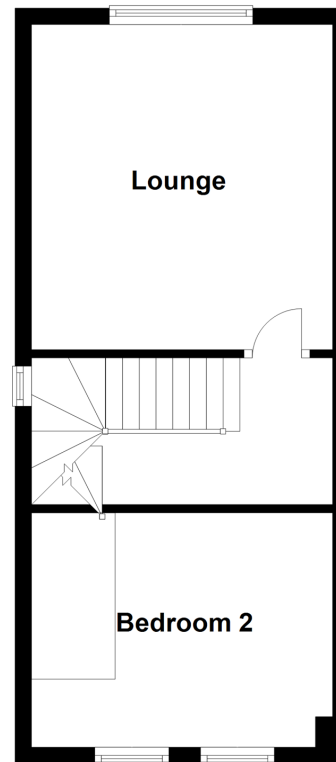
**Waterloo Place, Lewes,
East Sussex, BN7**

cubitt&west
Helping you move forwards

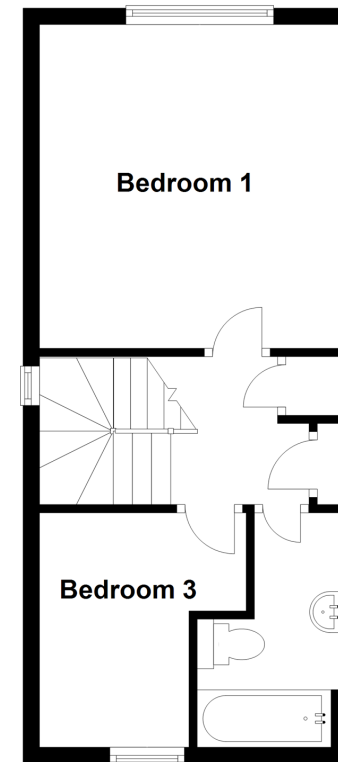
Ground Floor
Approx. 30.1 sq. metres (324.3 sq. feet)



First Floor
Approx. 32.3 sq. metres (347.4 sq. feet)



Second Floor
Approx. 32.3 sq. metres (347.4 sq. feet)



Accommodation

GROUND FLOOR

Hallway

Shower Room

Kitchen /Dining Room: 19'3 x 12'0
(5.87m x 3.66m)

FIRST FLOOR

Landing

Lounge: 13'0 x 12'0 (3.97m x 3.66m)

Bedroom 2: 12'0 x 9'4 (3.66m x
2.85m)

SECOND FLOOR

Landing

Bedroom 1: 13'3 x 12'0 (4.04m x
3.66m)

Bedroom 3: 9'8 x 8'9 (2.95m x
2.67m)

Bathroom

OUTSIDE

Rear Garden



Main features

- Modernised town house in the heart of this historic county town
- Walking distance to shops, schools & mainline station
- Flexible accommodation over three floors
- Private West facing rear garden with rear access
- Completely modernised and redesigned



Nearest Schools

Primary Schools: South Malling CofE Primary 0.4 miles, Western Road Community Primary 0.5 miles, Pells C of E Primary 0.5 miles. Secondary Schools: Lewes Old Grammar School 0.4 miles, Priory School 0.4 miles, Owlswick School 1.6 miles



Transport Information

Train Stations: Lewes 0.3 miles, Cooksbridge 2.0 miles, Glynde 2.7 miles



Address

Waterloo Place, Lewes, East Sussex, BN7



Directions

For directions to this property please contact us.



cubitt&west
Helping you move forwards

Call Lewes Branch (01273) 471231 ■ cubittandwest.co.uk



■ Legal advice should be taken to verify fixtures/fittings, planning, alterations and/or lease details ■ Appliances & services are untested, dimensions are approximate and floor plans are not to scale



23008309/20210518/SL/SL