



Price
£425,000

Freehold

2x  1x  1x 

**Kingslea, Leatherhead,
Surrey, KT22**

OVER 60?

Secure this property
for up to **59% less!**

cubitt & west
Helping you move forwards



Main features

- Terraced house
- Lovely rear garden with patio area and lawn area
- Garden office with air conditioning
- Modern throughout
- Sought-after location just a short walk to Leatherhead town centre

Accommodation

GROUND FLOOR

Porch

Lounge: 16'0 x 11'5 (4.88m x 3.48m)

Kitchen/Dining Room: 16'0 x 10'0 (4.88m x 3.05m)

FIRST FLOOR

Landing

Bedroom 1: 15'10 x 10'1 (4.83m x 3.08m)

Bedroom 2: 11'5 x 7'1 (3.48m x 2.16m)

Bathroom

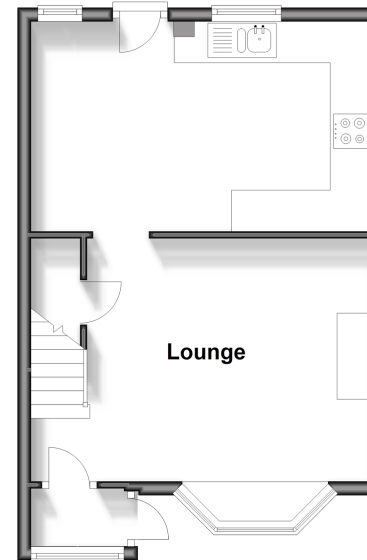
OUTSIDE

Front & Rear Gardens

Garden Office

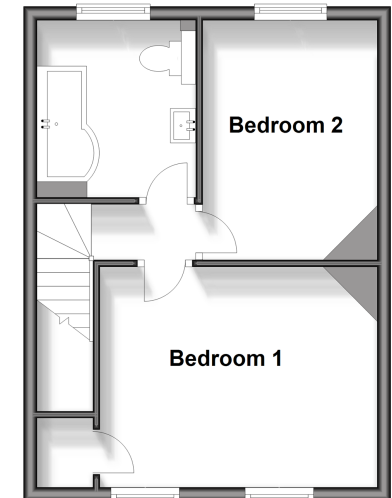
Ground Floor

Approx. 34.4 sq. metres (370.5 sq. feet)



First Floor

Approx. 33.7 sq. metres (362.7 sq. feet)



Call Leatherhead - 01372 373780 ■ CubittAndWest.Co.Uk

- Legal advice should be taken to verify fixtures/fittings, planning, alterations and/or lease details
- Appliances & services are untested, dimensions are approximate and floor plans are not to scale
- Through a Homewise Home For Life Plan people aged 60+ can secure this property for up to 59% less, by purchasing a Lifetime Lease.



21105993/20240327/NH/YK