



Price

£340,000

**Share of
Freehold**

2x  1x  1x 

**Russell Court,
Leatherhead, Surrey,
KT22**

OVER 60?

Secure this property
for up to **59% less!**

cubitt&west
Helping you move forwards



Main features

- Large front & rear garden with decking area
- Walking distance to town centre with local bars and restaurants
- Modern newly fitted kitchen
- Fitted wardrobes
- Share of freehold

Accommodation

GROUND FLOOR

Hallway

Lounge: 14'8 x 9'2 (4.47m x 2.80m)

Kitchen: 10'5 x 7'9 (3.18m x 2.36m)

Bedroom 1: 15'9 x 10'8 (4.80m x 3.25m)

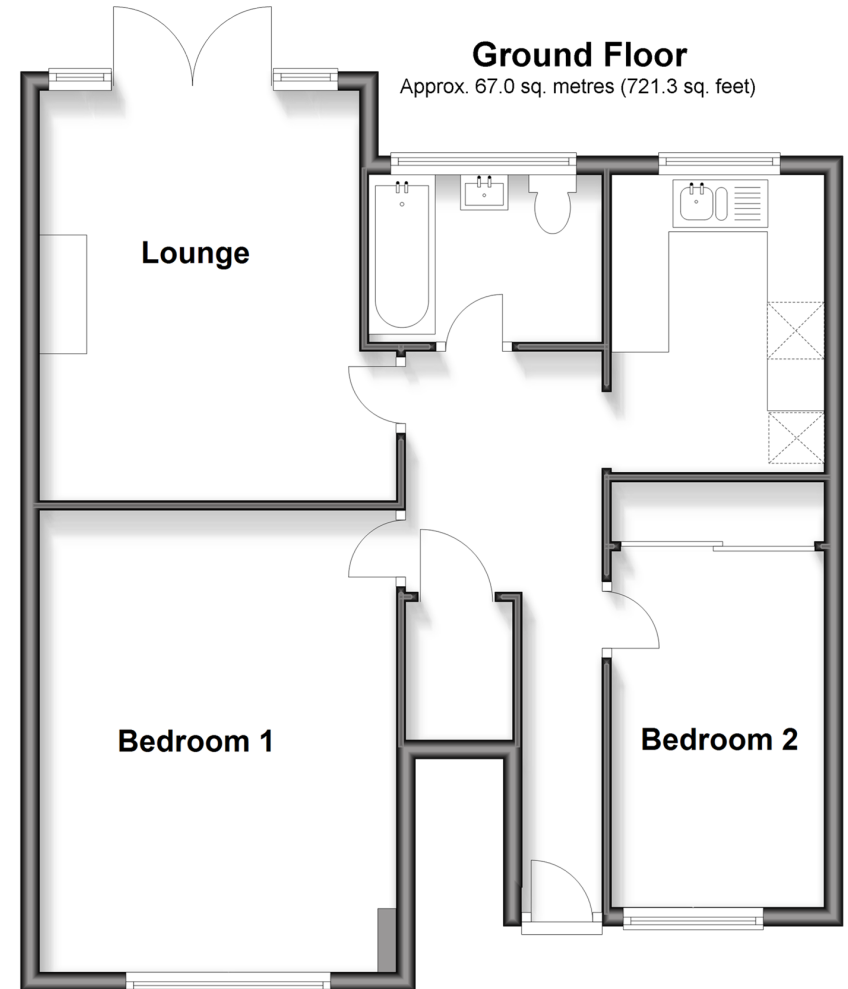
Bedroom 2: 14'3 x 8'1 (4.35m x 2.47m)

Bathroom

OUTSIDE

Front & Rear Gardens

Off-Road Parking



Call Leatherhead - 01372 373780 ■ CubittAndWest.Co.Uk

- Legal advice should be taken to verify fixtures/fittings, planning, alterations and/or lease details
- Appliances & services are untested, dimensions are approximate and floor plans are not to scale
- Through a Homewise Home For Life Plan people aged 60+ can secure this property for up to 59% less, by purchasing a Lifetime Lease.



21108359/20250724/MB1/JL