



OVER 60?

Secure this property
for up to **59% less!**

Price

£500,000

Freehold

3x  1x  1x 

**Norwood Road,
Effingham, Surrey, KT24**

cubitt&west
Helping you move forwards



Main features

- Modern fully fitted kitchen with bifold doors leading onto the garden
- Spacious living area flooded with natural light
- Large garden and patio
- Driveway for 2 cars
- Popular village location

Accommodation

GROUND FLOOR

Hallway
 Kitchen/Diner: 22'4 x 17'3 (6.81m x 5.26m)
 Lounge: 14'0 x 12'0 (4.27m x 3.66m)
 Cloakroom

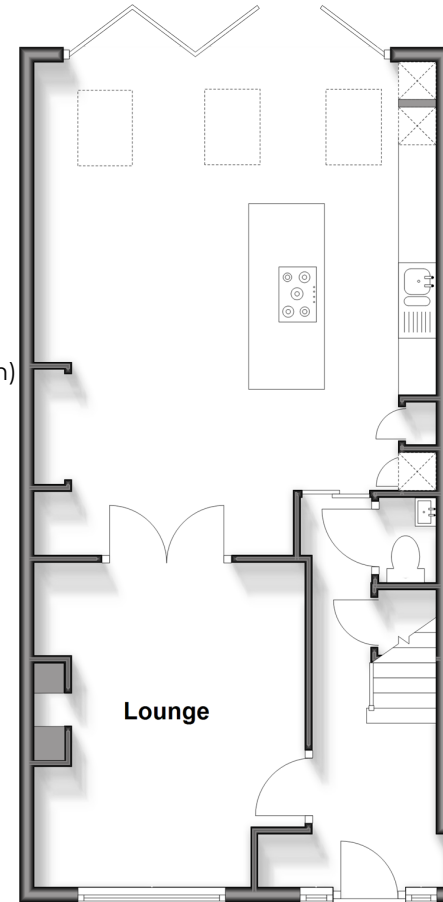
FIRST FLOOR

Landing
 Bedroom 1: 11'5 x 11'5 (3.48m x 3.48m)
 Bedroom 2: 11'4 x 10'3 (3.46m x 3.13m)
 Bedroom 3: 7'4 x 5'8 (2.24m x 1.73m)
 Bathroom

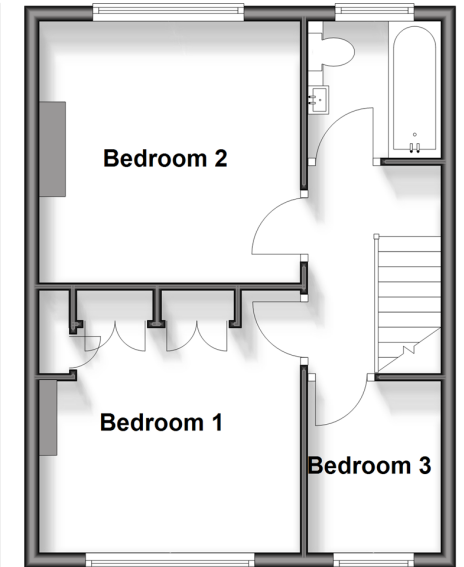
OUTSIDE

Driveway
 Rear Garden

Ground Floor
 Approx. 58.6 sq. metres (630.8 sq. feet)



First Floor
 Approx. 38.2 sq. metres (411.5 sq. feet)



Call Leatherhead - 01372 373780 ■ CubittAndWest.Co.Uk

- Legal advice should be taken to verify fixtures/fittings, planning, alterations and/or lease details
- Appliances & services are untested, dimensions are approximate and floor plans are not to scale
- Through a Homewise Home For Life Plan people aged 60+ can secure this property for up to 50% less, by purchasing a Lifetime Lease.



21108281/20250818/JL/JL