



Price

£610,000

Leasehold

3x  1x  1x 

**River Walk, Fetcham,
Leatherhead, Surrey,
KT22**

cubitt&west
Helping you move forwards



Main features

- Inviting living room, flooded with natural light
- Modern kitchen with quality integrated appliances, sleek countertops and ample storage
- Private rear garden
- Allocated parking for 2 cars
- Also available at 50% Shared Ownership

Accommodation

GROUND FLOOR

Hallway
Lounge: 15'3 x 14'8 (4.65m x 4.47m)
Kitchen: 11'3 x 10'2 (3.43m x 3.10m)
Cloakroom

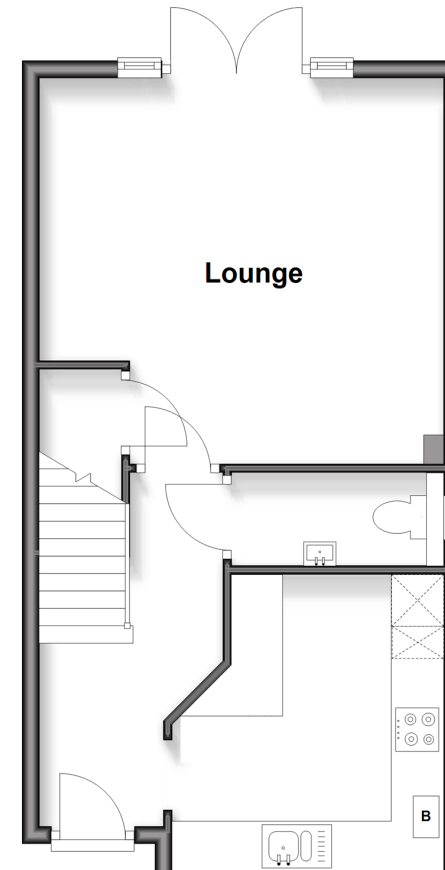
FIRST FLOOR

Landing
Bedroom 1: 15'4 x 8'9 (4.68m x 2.67m)
Bedroom 2: 13'4 x 8'3 (4.07m x 2.52m)
Bedroom 3: 10'6 x 6'7 (3.20m x 2.01m)
Bathroom

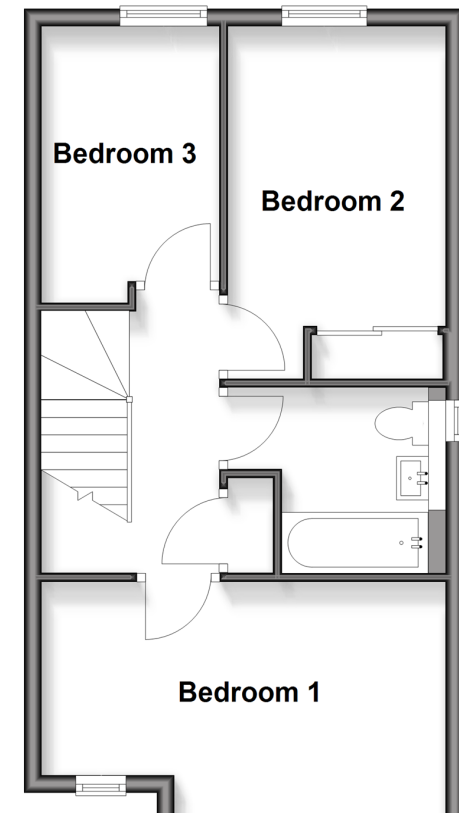
OUTSIDE

Rear Garden
2 Allocated Parking Spaces
Visitor Parking

Ground Floor
Approx. 42.2 sq. metres (454.1 sq. feet)



First Floor
Approx. 42.2 sq. metres (454.1 sq. feet)



Call Leatherhead - 01372 373780 ■ CubittAndWest.Co.Uk

- Legal advice should be taken to verify fixtures/fittings, planning, alterations and/or lease details
- Appliances & services are untested, dimensions are approximate and floor plans are not to scale



21108242/20250227/MB1/JL