



**Price**

**£800,000**

**Freehold**

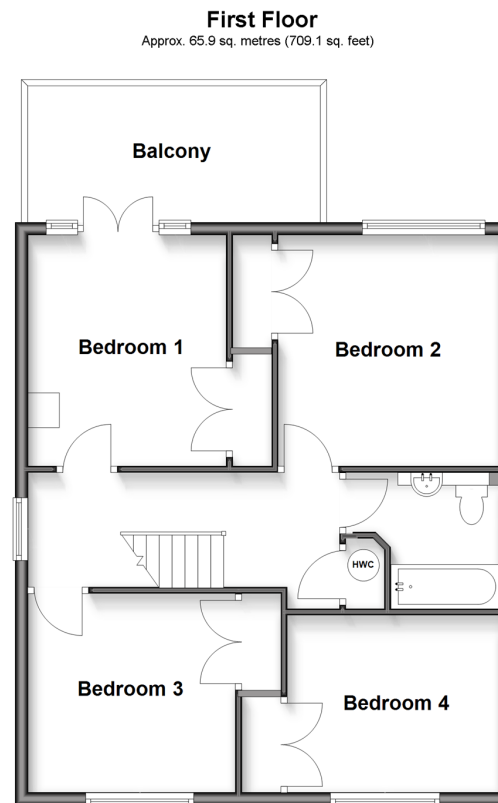
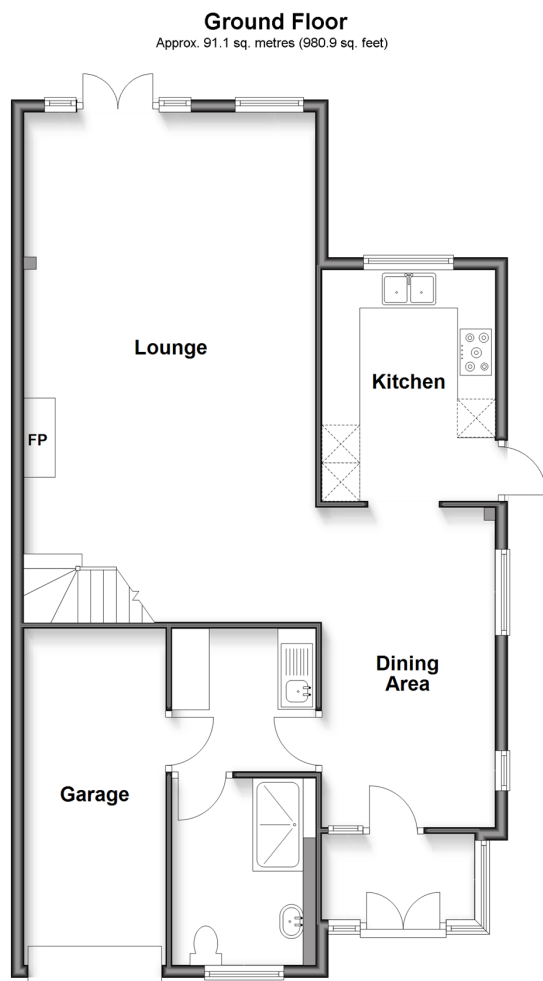
4x  2x  1x 

**Stag Leys, Ashted,  
Surrey, KT21**

**OVER 60?**

Secure this property  
for up to **59% less!**

**cubitt&west**  
Helping you move forwards



## Accommodation

### GROUND FLOOR

Porch  
Dining Area: 16'4 x 8'5 (4.98m x 2.57m)  
Kitchen: 11'9 x 8'9 (3.58m x 2.67m)  
Lounge: 26'8 x 14'7 (8.13m x 4.45m)  
Utility Area: 7'2 x 6'9 (2.19m x 2.06m)  
Shower Room

### FIRST FLOOR

Landing  
Bedroom 1: 12'6 x 11'2 (3.81m x 3.41m)  
Balcony  
Bedroom 2: 12'0 x 11'2 (3.66m x 3.41m)  
Bedroom 3: 11'4 x 10'3 (3.46m x 3.13m)  
Bedroom 4: 11'5 x 9'5 (3.48m x 2.87m)  
Bathroom

### OUTSIDE

Driveway  
Garage  
Front & Rear Gardens





## Main features

- Fantastic spacious property with extension possibilities (subject to necessary consents)
- Private driveway for 3/4 cars but also benefits from a garage
- Large, secluded garden with decking and patio
- This is the perfect home for growing families
- Sought-after location



### Nearest Schools

Primary Schools: St Peter's Catholic Primary 0.9 miles, West Ashted Primary 1.1 miles, Leatherhead Trinity School and Children's Centre 1.7 miles

Secondary Schools: St Andrew's Catholic School 0.9



### Transport Information

Train Stations: Ashted 1.7 miles, Leatherhead 1.8 miles, Boxhill & Westhumble 3.3 miles



### Address

Stag Leys, Ashted, Surrey, KT21



### Directions

For directions to this property please contact us.





**cubitt&west**  
Helping you move forwards

Call Leatherhead Branch 01372 373780 ■ [CubittAndWest.Co.Uk](https://CubittAndWest.Co.Uk)



■ Legal advice should be taken to verify fixtures/fittings, planning, alterations and/or lease details ■ Appliances & services are untested, dimensions are approximate and floor plans are not to scale  
■ Through a Homewise Home For Life Plan people aged 60+ can secure this property for up to 59% less, by purchasing a Lifetime Lease.



21108253/20250414/MB1/JL