



Price

£675,000

Freehold

3x  1x  2x 

Lodge Road, Fetcham,
Leatherhead, Surrey,
KT22

OVER 60?

Secure this property
for up to **59% less!**

cubitt & west
Helping you move forwards



Main features

- Perfect for a growing family
- Outbuilding at rear of garden ideal for home office/gym/play room
- Kerb appeal
- Lovingly maintained
- Within catchment for outstanding schools and transport links

Accommodation

GROUND FLOOR

Entrance Hall

Lounge: 14'2 x 11'7 (4.32m x 3.53m)

Dining Area: 12'4 x 10'9 (3.76m x 3.28m)

Kitchen: 16'5 x 10'9 (5.01m x 3.28m)

Conservatory: 9'7 x 8'6 (2.92m x 2.59m)

FIRST FLOOR

Landing

Bedroom 1: 13'8 x 10'7 (4.17m x 3.23m)

Bedroom 2: 12'4 x 10'7 (3.76m x 3.23m)

Bedroom 3: 8'3 x 6'4 (2.52m x 1.93m)

Bathroom

OUTBUILDING

Workshop

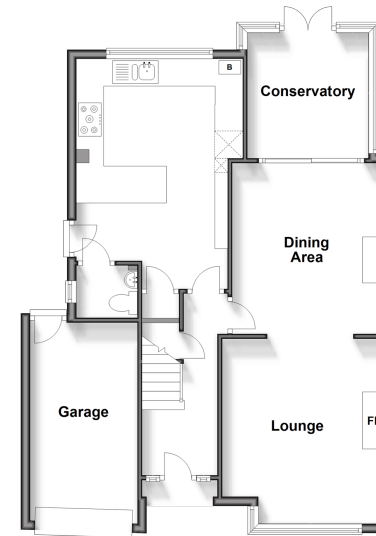
OUTSIDE

Front & Rear Gardens

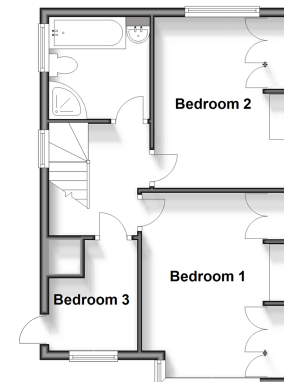
Off-Road Parking

Garage

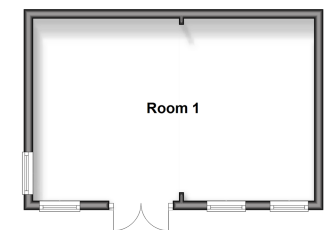
Ground Floor
Approx. 73.0 sq. metres (786.2 sq. feet)



First Floor
Approx. 40.6 sq. metres (436.7 sq. feet)



Outbuilding
Approx. 24.6 sq. metres (264.8 sq. feet)



Call Leatherhead - 01372 373780 ■ CubittAndWest.Co.Uk

- Legal advice should be taken to verify fixtures/fittings, planning, alterations and/or lease details
- Appliances & services are untested, dimensions are approximate and floor plans are not to scale
- Through a Homewise Home For Life Plan people aged 60+ can secure this property for up to 59% less, by purchasing a Lifetime Lease.



21107812/20240723/MB1/NH