



Guide Price
£350,000

**Share of
Freehold**

2x  2x  1x 

**Kingston Road,
Leatherhead, Surrey,
KT22**

OVER 60?

Secure this property
for up to **59% less!**

cubitt & west
Helping you move forwards



Main features

- No onward chain and share of freehold
- Private rear garden featuring home office
- En suite shower room, driveway and large loft
- Excellent transport links via Leatherhead train station and M25

Accommodation

FIRST FLOOR

- Lounge: 20'1 x 10'4 (6.13m x 3.15m)
- Kitchen: 14'1 x 7'3 (4.30m x 2.21m)
- Bedroom 1: 13'9 x 11'3 (4.19m x 3.43m)
- En-Suite Shower Room
- Bedroom 2: 12'9 x 12'2 (3.89m x 3.71m)
- Bathroom

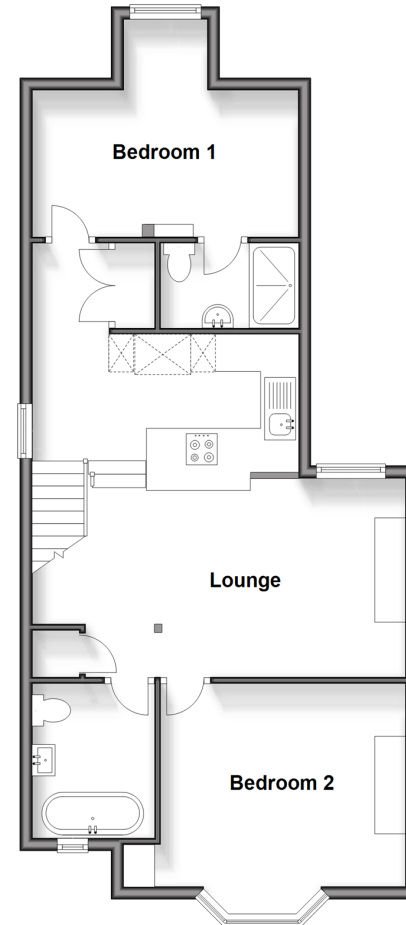
OUTBUILDING

Garden Office

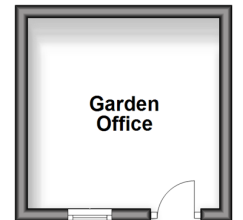
OUTSIDE

Rear Garden
Driveway

First Floor
Approx. 66.6 sq. metres (716.5 sq. feet)



Outbuilding
Approx. 9.3 sq. metres (100.1 sq. feet)



Call Leatherhead - 01372 373780 ■ CubittAndWest.Co.Uk

- Legal advice should be taken to verify fixtures/fittings, planning, alterations and/or lease details
- Appliances & services are untested, dimensions are approximate and floor plans are not to scale
- Through a Homewise Home For Life Plan people aged 60+ can secure this property for up to 59% less, by purchasing a Lifetime Lease.



21108026/20241012/MB1/LB