



**Price**  
**£430,000**

**Freehold**

2x  1x  2x 

**Leatherhead Road,  
Chessington, Surrey,  
KT9**

**OVER 60?**

Secure this property  
for up to **59% less!**

**cubitt&west**  
Helping you move forwards





## Main features

- Chain free
- Period home
- Quiet secluded garden with beautiful outlook onto farmland
- Original fireplace in lounge
- Large kitchen and bathroom with plenty of scope to modernise

## Accommodation

### GROUND FLOOR

Hallway  
 Lounge: 12'1 x 11'1 (3.69m x 3.38m)  
 Kitchen: 12'1 x 7'1 (3.69m x 2.16m)  
 Dining Room: 12'2 x 11'2 (3.71m x 3.41m)

### FIRST FLOOR

Landing  
 Bedroom 1: 9'1 x 9'0 (2.77m x 2.75m)  
 Bedroom 2: 10'9 x 7'9 (3.28m x 2.36m)  
 Bathroom

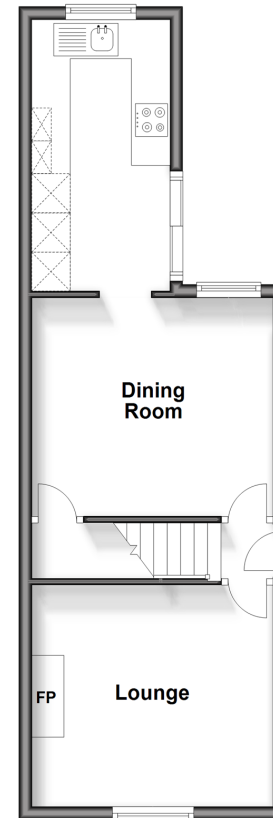
### SECOND FLOOR

Loft Room: 25'8 x 8'0 (7.83m x 2.44m)

### OUTSIDE

Front & Rear Gardens  
 Driveway

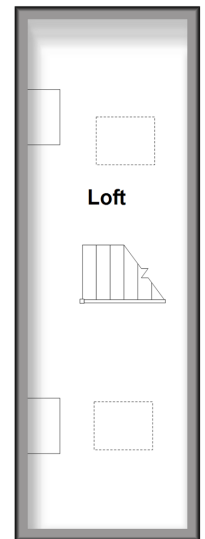
**Ground Floor**  
 Approx. 38.4 sq. metres (412.8 sq. feet)



**First Floor**  
 Approx. 38.4 sq. metres (412.8 sq. feet)



**Second Floor**  
 approx. 19.3 sq. metres (207.9 sq. feet)



**Call Leatherhead - 01372 373780 ■ CubittAndWest.Co.Uk**

- Legal advice should be taken to verify fixtures/fittings, planning, alterations and/or lease details
- Appliances & services are untested, dimensions are approximate and floor plans are not to scale
- Through a Homewise Home For Life Plan people aged 60+ can secure this property for up to 59% less, by purchasing a Lifetime Lease.



21108100/20240420/MB1/NH