



Price
£975,000

Freehold

4x  2x  2x 

**Oaklands, Fetcham,
Surrey, KT22**

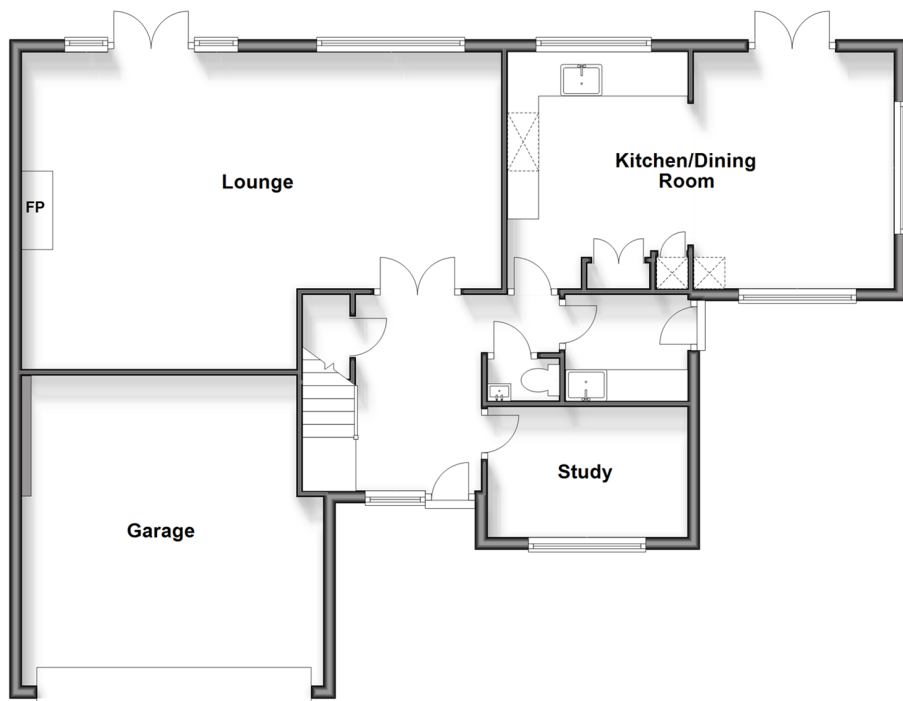
OVER 60?

Secure this property
for up to **59% less!**

cubitt & west
Helping you move forwards

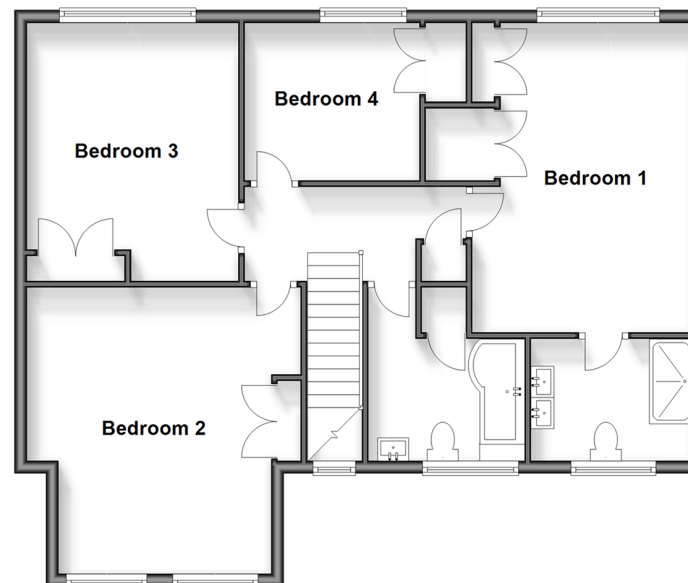
Ground Floor

Approx. 105.4 sq. metres (1134.7 sq. feet)



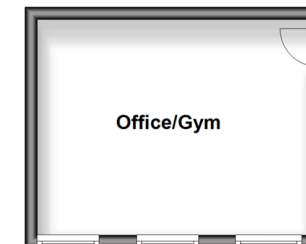
First Floor

Approx. 83.0 sq. metres (893.0 sq. feet)



Outbuilding

Approx. 15.0 sq. metres (161.9 sq. feet)



Accommodation

GROUND FLOOR

Hallway

Lounge: 25'6 x 17'3 (7.78m x 5.26m)

Kitchen/Dining Room: 20'5 x 12'4 (6.23m x 3.76m)

Utility Room: 7'1 x 5'7 (2.16m x 1.70m)

Study: 10'5 x 6'8 (3.18m x 2.03m)

Cloakroom

FIRST FLOOR

Landing

Bedroom 1: 16'3 x 11'8 (4.96m x 3.56m)

En-Suite Shower Room

Bedroom 2: 15'1 x 14'8 (4.60m x 4.47m)

Bedroom 3: 14'6 x 11'9 (4.42m x 3.58m)

Bedroom 4: 9'2 x 8'6 (2.80m x 2.59m)

Bathroom

OUTSIDE

Front & Rear Gardens

Double Garage

Driveway

OUTBUILDING

Office/Gym



Main features

- Beautifully presented throughout
- Quiet cul-de-sac location
- Driveway for three cars and a double garage with electric door
- Landscaped rear garden featuring home gym and pond with water feature
- Cloakroom, study and en-suite shower room



Nearest Schools

Primary Schools: Oakfield Junior School 0.3 miles, Eastwick Junior School 0.4 miles, The Dawnay School 0.9 miles
Secondary Schools: Manor House School 1.6 miles,



Transport Information

Train Stations: Bookham 1.2 miles, Leatherhead 1.3 miles, Boxhill & Westhumble 2.5 miles



Address

Oaklands, Fetcham, Surrey, KT22



Directions

For directions to this property please contact us.



cubitt&west
Helping you move forwards

Call Leatherhead Branch 01372 373780 ■ CubittAndWest.Co.Uk



- Legal advice should be taken to verify fixtures/fittings, planning, alterations and/or lease details
- Appliances & services are untested, dimensions are approximate and floor plans are not to scale
- Through a Homewise Home For Life Plan people aged 60+ can secure this property for up to 59% less, by purchasing a Lifetime Lease.



EPC RATING



21108082/20240517/LB/LB