



**Price**  
**£230,000**

**Leasehold**

2x  1x  1x 

**Green Lane,  
Chessington, Surrey,  
KT9**

**OVER 60?**

Secure this property  
for up to **59% less!**

**cubitt & west**  
Helping you move forwards



## Main features

- Chain free
- Balcony
- On site parking
- Close to local amenities and Horton Country Park
- Well connected via a short walk to Chessington South train station

## Accommodation

### SECOND FLOOR

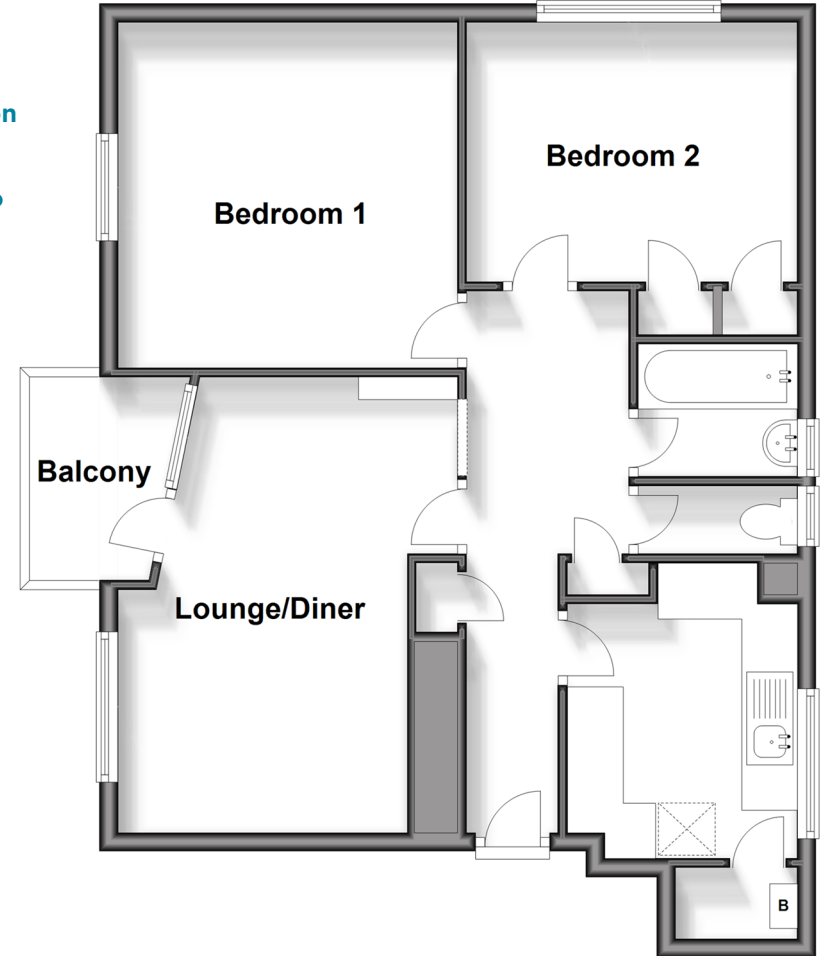
- Hallway
- Lounge/Diner: 18'1 x 10'3 (5.52m x 3.13m)
- Balcony
- Kitchen: 10'5 x 8'5 (3.18m x 2.57m)
- Bedroom 1: 12'2 x 11'9 (3.71m x 3.58m)
- Bedroom 2: 11'9 x 9'2 (3.58m x 2.80m)
- Bathroom
- Separate Toilet

### OUTSIDE

- Off-Road Parking

## Second Floor

Approx. 63.9 sq. metres (687.5 sq. feet)



**Call Leatherhead - 01372 373780 ■ CubittAndWest.Co.Uk**

- Legal advice should be taken to verify fixtures/fittings, planning, alterations and/or lease details
- Appliances & services are untested, dimensions are approximate and floor plans are not to scale
- Through a Homewise Home For Life Plan people aged 60+ can secure this property for up to 59% less, by purchasing a Lifetime Lease.



21107967/20240806/LB/LB