



Price
£945,000

Freehold

3x  3x  2x 

**Hazel Way, Fetcham,
Surrey, KT22**

OVER 60?

Secure this property
for up to **59% less!**

cubitt & west
Helping you move forwards



Main features

- Detached chalet bungalow with self contained studio annexe
- Internal access to the studio annexe is from the kitchen
- Landscaped front and rear gardens
- Three bath/shower rooms
- Quiet location

Accommodation

GROUND FLOOR

- Hallway
- Lounge/Diner: 23'6 x 23'3 (7.17m x 7.09m)
- Kitchen: 23'6 x 14'4 (7.17m x 4.37m)
- Utility Room: 9'2 x 6'2 (2.80m x 1.88m)
- Studio Annexe: 19'9 x 10'1 (6.02m x 3.08m)
- Shower Room
- Kitchen: 8'6 x 5'2 (2.59m x 1.58m)

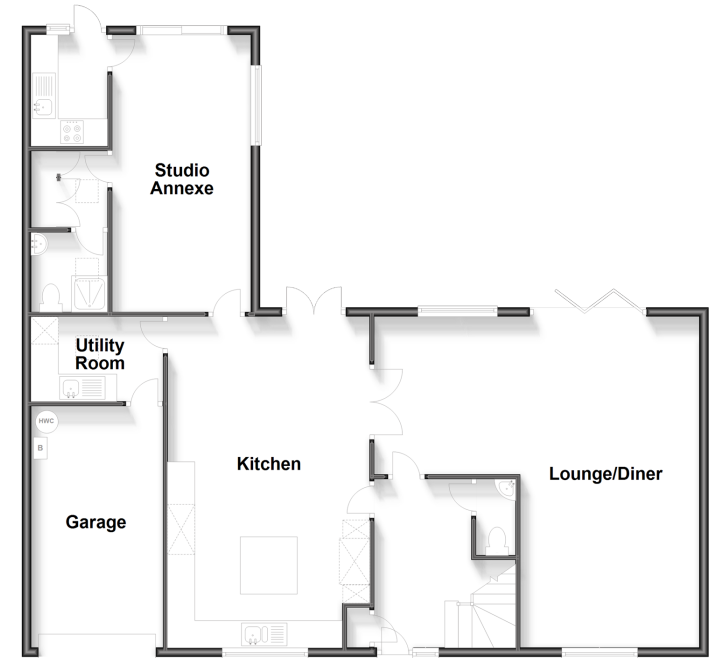
FIRST FLOOR

- Landing
- Bedroom 1: 20'7 x 14'3 (6.28m x 4.35m)
- En-Suite Shower Room
- Bedroom 2: 12'6 x 12'3 (3.81m x 3.74m)
- Bedroom 3: 12'6 x 7'9 (3.81m x 2.36m)
- Bathroom

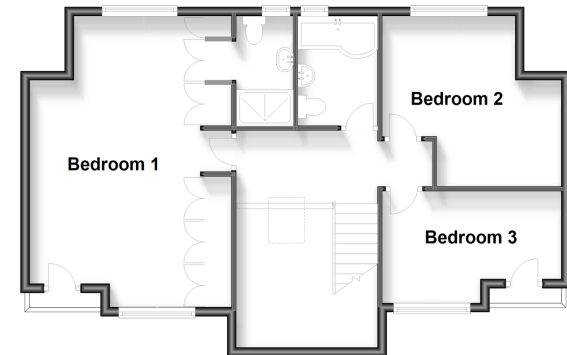
OUTSIDE

- Garage
- Front & Rear Gardens

Ground Floor
Approx. 136.3 sq. metres (1466.7 sq. feet)



First Floor
Approx. 72.2 sq. metres (777.6 sq. feet)



Call Leatherhead - 01372 373780 ■ CubittAndWest.Co.Uk

- Legal advice should be taken to verify fixtures/fittings, planning, alterations and/or lease details
- Appliances & services are untested, dimensions are approximate and floor plans are not to scale
- Through a Homewise Home For Life Plan people aged 60+ can secure this property for up to 59% less, by purchasing a Lifetime Lease.



21101838/20231025/DC/DC