



Price
£450,000

Freehold

2x  1x  2x 

**Aperdele Road,
Leatherhead, Surrey,
KT22**

OVER 60?

You could get up to
59% off the price!*



cubitt & west
Helping you move forwards



Main features

- A beautifully presented and stunning bungalow
- Open plan lounge/kitchen/diner with separate study
- Bi-folding doors onto secured landscaped private rear garden
- Brick built utility cupboard
- Off-road parking for several cars

Accommodation

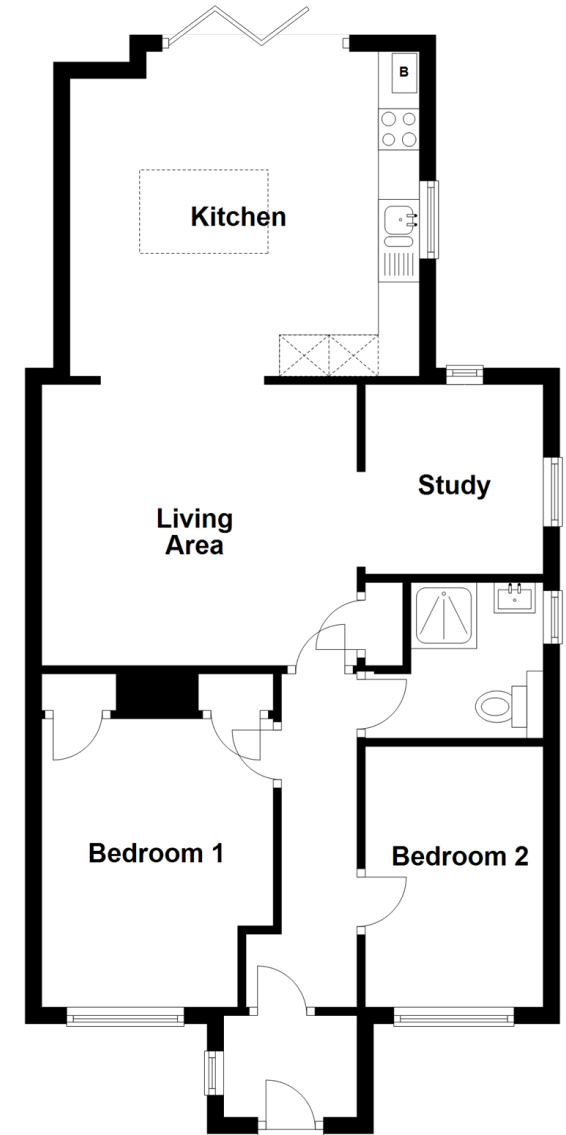
GROUND FLOOR

- **Living Area:** 12'8 x 10'11 (3.86m x 3.33m)
- **Kitchen:** 13'10 x 13'0 (4.22m x 3.97m)
- **Study/Bedroom 3:** 7'7 x 6'11 (2.31m x 2.11m)
- **Bedroom 1:** 11'4 x 9'5 (3.46m x 2.87m)
- **Bedroom 2:** 10'2 x 6'11 (3.10m x 2.11m)
- **Shower Room**

OUTSIDE

- **Front & Rear Gardens**
- **Off-Road Parking**

Ground Floor
Approx. 64.9 sq. metres (698.7 sq. feet)



Call Leatherhead - 01372 373780 ■ CubittAndWest.Co.Uk

- Legal advice should be taken to verify fixtures/fittings, planning, alterations and/or lease details
- Appliances & services are untested, dimensions are approximate and floor plans are not to scale
- Our Homewise partnership offer a 'Home for Life' plan to buyers over 60, granting a lifetime lease for your protection and reducing the purchase price by up to 59%



21107547 / 20210705/MB/AM