



Price
£170,000

Leasehold

2x  1x  1x 

**Bishopric Court,
Horsham, West Sussex,
RH12**

OVER 60?

Secure this property
for up to **59% less!**

cubitt&west
Helping you move forwards



Main features

- **Fantastic central location, just a few moments away from shopping area**
- **Benefits from resident permit parking and communal gardens**
- **Extended lease for your peace of mind**
- **Heating and hot water included in service charge**
- **No onward chain**

Accommodation

TOP FLOOR

Entrance Hall

Bedroom 2: 10'6 at widest point x 6'10 at widest point (3.20m x 2.08m)

Bathroom: 5'6 x 4'9 (1.68m x 1.45m)

Bedroom 1: 13'7 at widest point x 11'5 at widest point (4.14m x 3.48m)

Kitchen: 11'2 x 5'6 (3.41m x 1.68m)

Lounge: 12'6 at widest point x 10'6 at widest point (3.81m x 3.20m)

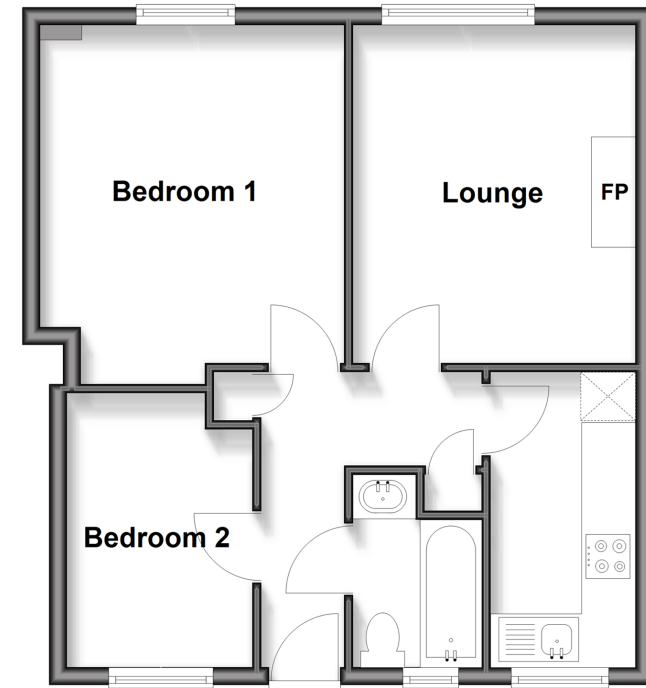
OUTSIDE

Communal Garden

Residents' Permit Parking

Top Floor

Approx. 47.9 sq. metres (516.1 sq. feet)



Call Horsham - 01403 269268 ■ cubittandwest.co.uk

■ Legal advice should be taken to verify fixtures/fittings, planning, alterations and/or lease details
 ■ Through a Homewise Home For Life Plan people aged 60+ can secure this property for up to 50% less, by purchasing a Lifetime Lease.

■ Appliances & services are untested, dimensions are approximate and floor plans are not to scale



20917787/20250910/SEH/CB