



Price

£260,000

Leasehold

2x  2x  1x 

**Bowes Close, Horsham,
West Sussex, RH13**

OVER 60?

Secure this property
for up to **59% less!**

cubitt&west
Helping you move forwards



Main features

- Located in a peaceful position
- Short walk to mainline station and Horsham Park
- Allocated parking and plenty of visitor parking
- Large lounge/diner and separate kitchen
- Luxury of en suite shower room to principal bedroom

Accommodation

GROUND FLOOR

Entrance Hall

Lounge: 19'0 into bay x 11'8 at widest point (5.80m x 3.56m)

Kitchen: 12'8 at widest point x 7'2 at widest point (3.86m x 2.19m)

Bathroom: 7'2 x 5'6 (2.19m x 1.68m)

Bedroom 1: 14'4 at widest point x 8'4 at widest point (4.37m x 2.54m)

En Suite Shower Room: 5'0 x 5'0 (1.53m x 1.53m)

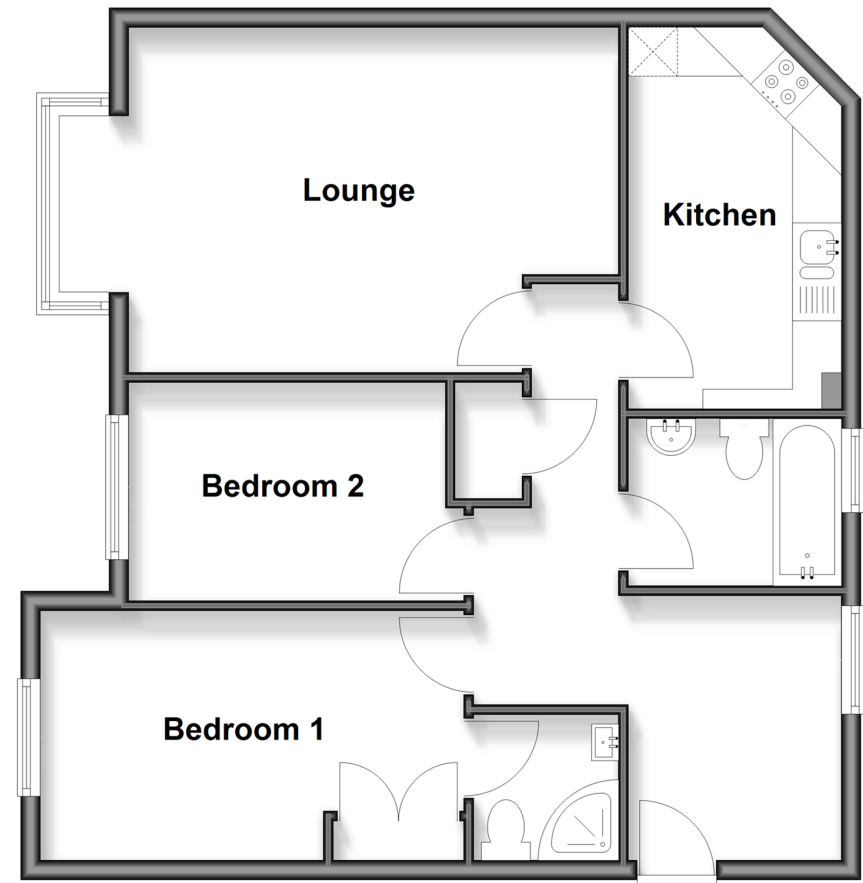
Bedroom 2: 10'6 x 7'3 (3.20m x 2.21m)

OUTSIDE

Allocated Parking Space
Communal Garden

Ground Floor

Approx. 64.6 sq. metres (695.1 sq. feet)



Call Horsham - 01403 269268 ■ cubittandwest.co.uk

- Legal advice should be taken to verify fixtures/fittings, planning, alterations and/or lease details
- Appliances & services are untested, dimensions are approximate and floor plans are not to scale
- Through a Homewise Home For Life Plan people aged 60+ can secure this property for up to 59% less, by purchasing a Lifetime Lease.



21005856/20250728/SEH/CB