



**OVER 60?**

Secure this property  
for up to **59% less!**

**Price**

**£400,000**

**Freehold**

4x  1x  1x 

**Siskin Close, Horsham,  
West Sussex, RH12**

**cubitt&west**  
Helping you move forwards





## Main features

- A spacious family home
- Just a short walk to Littlehaven Station
- Near to great schools and local shops
- Convenience of driveway parking for 2 cars
- Good size kitchen/dining room and separate lounge

## Accommodation

### GROUND FLOOR

Entrance Hall  
Cloakroom  
Kitchen/Dining Room: 19'6 x 9'5 at widest point (5.95m x 2.87m)  
Lounge: 15'7 at widest point x 11'5 at widest point (4.75m x 3.48m)

### FIRST FLOOR

Landing  
Bedroom 4: 9'4 x 7'0 (2.85m x 2.14m)  
Bedroom 2: 17'0 x 8'6 at widest point (5.19m x 2.59m)  
Bedroom 3: 15'6 x 9'7 at widest point (4.73m x 2.92m)  
Bathroom: 6'7 x 5'6 (2.01m x 1.68m)

### SECOND FLOOR

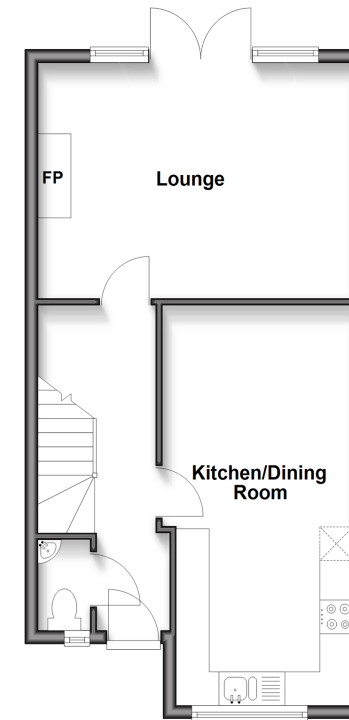
Landing  
Bedroom 1: 15'8 x 12'8 (4.78m x 3.86m)

### OUTSIDE

Front & Rear Garden  
Off Road Parking

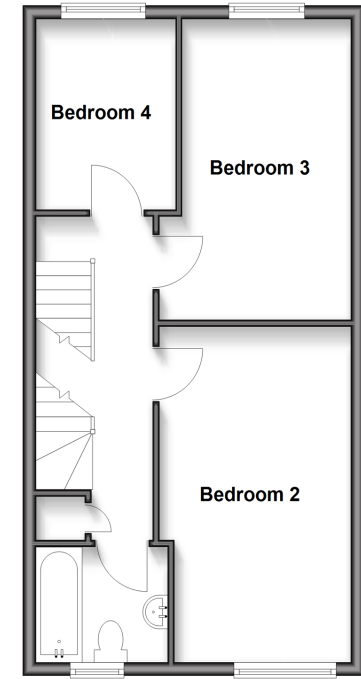
### Ground Floor

Approx. 43.3 sq. metres (466.2 sq. feet)



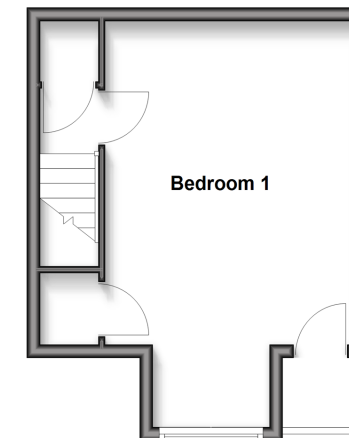
### First Floor

Approx. 45.6 sq. metres (491.3 sq. feet)



### Second Floor

Approx. 25.7 sq. metres (276.1 sq. feet)



**Call Horsham - 01403 269268 ■ [cubittandwest.co.uk](http://cubittandwest.co.uk)**

- If buying to let, the energy rating will need to be improved to at least 'E' rating before you can let the property
- Legal advice should be taken to verify fixtures/fittings, planning, alterations and/or lease details
- Appliances & services are untested, dimensions are approximate and floor plans are not to scale
- Through a Homewise Home For Life Plan people aged 60+ can secure this property for up to 59% less, by purchasing a Lifetime Lease.



20918051/20250702/SEH/CB