

OVER 60?

Secure this property
for up to **59% less!**



Price

£290,000

Leasehold

2x  2x  1x 

Illett Way, Faygate, Horsham, West

Sussex, RH12

cubitt&west
Helping you move forwards



Main features

- Beautifully presented modern property
- Open plan kitchen and living space, perfect for entertaining
- Convenience of allocated parking
- Great location just a short drive to Horsham, Gatwick and the M23
- Luxury of en suite to principal bedroom

Accommodation

SECOND FLOOR

Entrance Hall

Lounge: 17'3 at widest point x 13'1 at widest point (5.26m x 3.99m)

Kitchen : 11'5 x 9'1 (3.48m x 2.77m)

Bedroom 1: 11'3 x 10'4 into fitted wardrobes (3.43m x 3.15m)

En Suite Shower Room: 11'2 x 3'11 (3.41m x 1.19m)

Bedroom 2: 10'7 x 9'7 (3.23m x 2.92m)

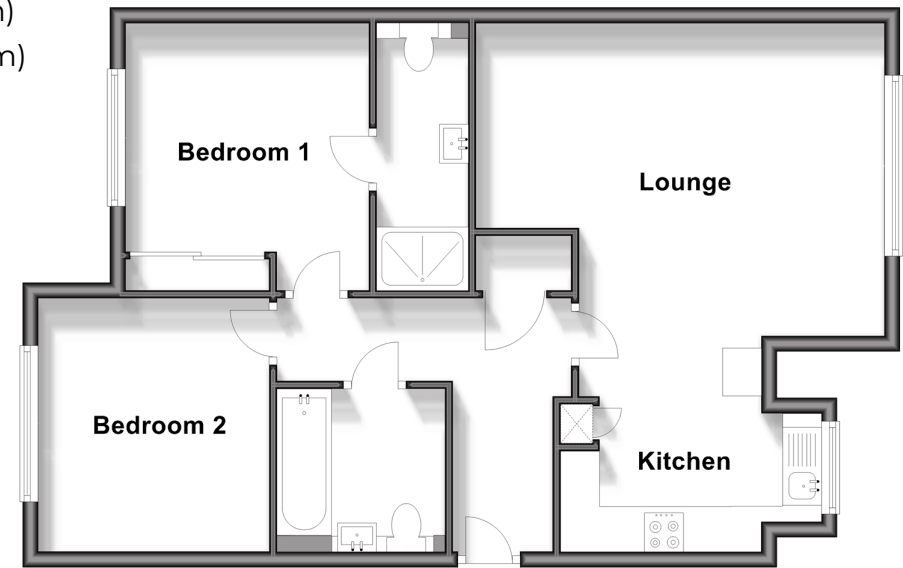
Bathroom: 7'0 x 5'6 (2.14m x 1.68m)

OUTSIDE

Allocated Parking

Second Floor

Approx. 66.5 sq. metres (715.9 sq. feet)



Call Horsham - 01403 269268 ■ cubittandwest.co.uk

- Legal advice should be taken to verify fixtures/fittings, planning, alterations and/or lease details
- Appliances & services are untested, dimensions are approximate and floor plans are not to scale
- Through a Homewise Home For Life Plan people aged 60+ can secure this property for up to 59% less, by purchasing a Lifetime Lease.



20917957/20250722/SEH/CB