



Price

£500,000

Freehold

2x  1x  1x 

**Acorns, Horsham, West
Sussex, RH13**

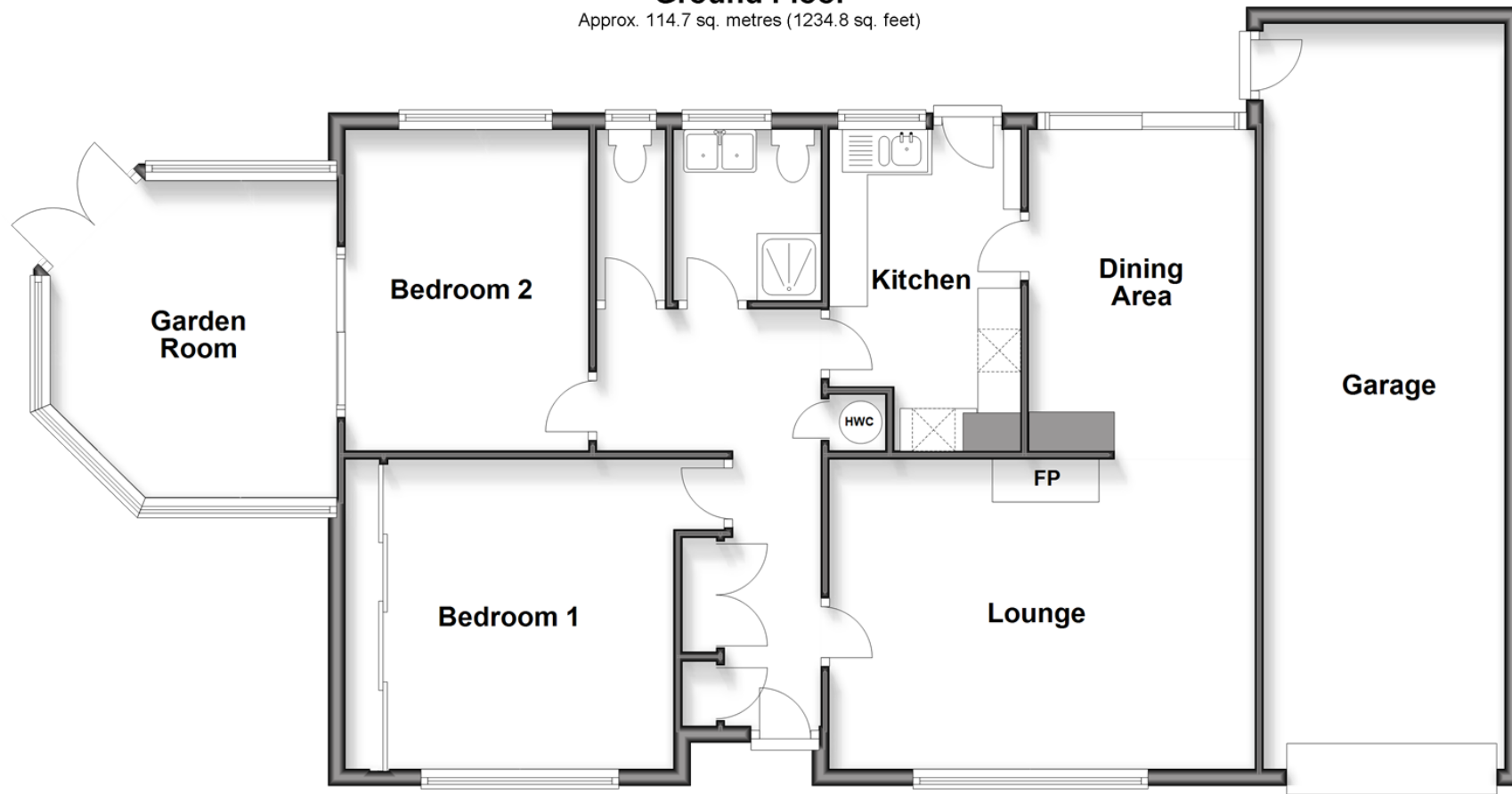
OVER 60?

Secure this property
for up to **59% less!**

cubitt&west
Helping you move forwards

Ground Floor

Approx. 114.7 sq. metres (1234.8 sq. feet)



Accommodation

GROUND FLOOR

Entrance Hall

Lounge: 16'4 x 10'11 (4.98m x 3.33m)

Dining Area: 10'10 x 8'8 (3.30m x 2.64m)

Kitchen: 11'0 x 7'7 (3.36m x 2.31m)

Shower Room: 6'7 x 5'5 (2.01m x 1.65m)

Separate Toilet

Bedroom 1: 12'6 into fitted wardrobes x 11'11 (3.81m x 3.63m)

Bedroom 2: 12'1 x 9'5 (3.69m x 2.87m)

Garden Room: 11'7 at widest point x 10'10 at widest point (3.53m x 3.30m)

OUTSIDE

Rear & Side Garden

Garage: 28'11 x 9'3 (8.82m x 2.82m)

Driveway



Main features

- Located at the end of a quiet and peaceful cul de sac
- Walking distance for most to local shops and bus routes
- Good size lounge and dining area
- Tandem garage, ideal for storage and a workshop
- Lovely garden room overlooking the much-loved gardens



Nearest Schools

Primary Schools: Leechpool Primary 0.0 miles, Northolmes Junior School, Horsham 0.1 miles, St Robert Southwell Catholic Primary, Horsham 0.5 miles. Secondary Schools: Millais School 0.7 miles, Forest School, The 0.9 miles.



Transport Information

Train Stations: Littlehaven 0.7 miles, Horsham 1.1 miles, Warnham 2.0 miles



Address

Acorns, Horsham, West Sussex, RH13



Directions

For directions to this property please contact us.



cubitt&west
Helping you move forwards

Call Horsham Branch 01403 269268 ■ cubittandwest.co.uk



■ Legal advice should be taken to verify fixtures/fittings, planning, alterations and/or lease details ■ Appliances & services are untested, dimensions are approximate and floor plans are not to scale
■ Through a Homewise Home For Life Plan people aged 60+ can secure this property for up to 59% less, by purchasing a Lifetime Lease.



20917931/20250220/SEH/CB