



OVER 60?

Secure this property
for up to **59% less!**

Price

£1,125,000

Freehold

5x  3x  3x 

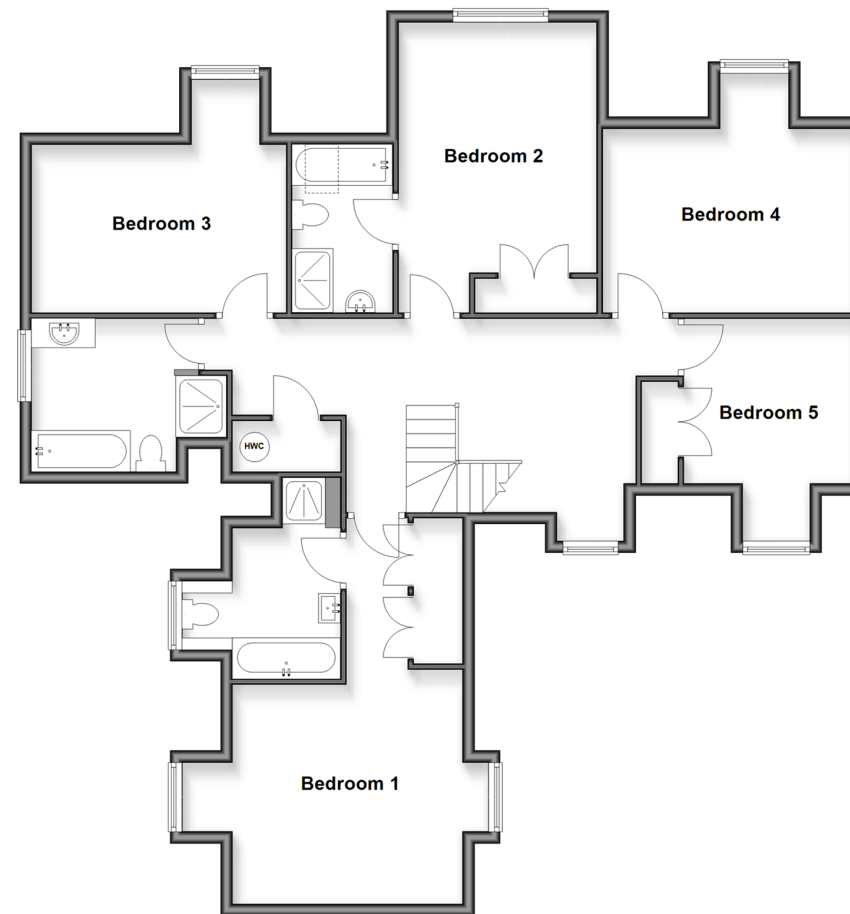
**Farm Close, Horsham,
West Sussex, RH12**

cubitt&west
Helping you move forwards

Ground Floor
Approx. 149.8 sq. metres (1612.4 sq. feet)



First Floor
Approx. 122.7 sq. metres (1320.3 sq. feet)



Accommodation

GROUND FLOOR

Entrance Hall

Cloakroom

Study: 9'11 x 8'11 up to bay (3.02m x 2.72m)

Lounge: 18'0 at widest point x 17'2 at widest point (5.49m x 5.24m)

Dining Room: 14'7 x 11'9 (4.45m x 3.58m)

Kitchen/Breakfast Room: 20'4 x 15'3 (6.20m x 4.65m)

Utility Room: 16'9 x 5'9 (5.11m x 1.75m)

FIRST FLOOR

Landing

Bedroom 1: (L-shaped) 12'8 into fitted wardrobes x 12'2 (3.86m x 3.71m) plus 9'6 into fitted wardrobes x 5'6 (2.90m x 1.68m)

En Suite Bathroom: 8'4 x 5'9 (2.54m x 1.75m)

Bedroom 2: 16'4 into fitted wardrobes x 11'2 (4.98m x 3.41m)

En Suite Bathroom: 9'4 x 5'9 (2.85m x 1.75m)

Bedroom 3: 13'8 x 9'8 up to bay (4.17m x 2.95m)

Bedroom 4: 14'0 x 10'3 up to bay (4.27m x 3.13m)

Bedroom 5: 9'4 up to bay x 9'3 (2.85m x 2.82m)

Family Bathroom: 8'6 x 8'1 (2.59m x 2.47m)

OUTSIDE

Garage: 17'7 x 13'0 (5.36m x 3.97m)

Workshop: 12'10 x 8'3 (3.91m x 2.52m)

Rear Garden

Front Garden

Driveway



Main features

- A stunning executive family home located in a quiet and peaceful cul de sac
- Situated at the heart of one of our most beautiful villages
- Approaching 3000 square feet of accommodation
- A fantastic modern and contemporary kitchen breakfast room
- Good size bedrooms including 2 with en-suite facilities



Nearest Schools

Primary Schools: Warnham CofE Primary 0.2 miles, Shelley Primary 1.3 miles, North Heath Community Primary 1.4 miles. Secondary Schools: Farlington School 1.4 miles, Tanbridge House School 1.6 miles, Millais School 2.4 miles.



Transport Information

Train Stations: Warnham 0.8 miles, Littlehaven 1.8 miles, Horsham 2.0 miles



Address

Farm Close, Horsham, West Sussex, RH12



Directions

For directions to this property please contact us.



cubitt&west
Helping you move forwards

Call Horsham Branch 01403 269268 ■ cubittandwest.co.uk



■ Legal advice should be taken to verify fixtures/fittings, planning, alterations and/or lease details ■ Appliances & services are untested, dimensions are approximate and floor plans are not to scale
■ Through a Homewise Home For Life Plan people aged 60+ can secure this property for up to 59% less, by purchasing a Lifetime Lease.



20917072/20250220/SEH/CB