



Price
£450,000

Freehold

3x  2x  1x 

**Stillwell Way, Faygate,
West Sussex, RH12**

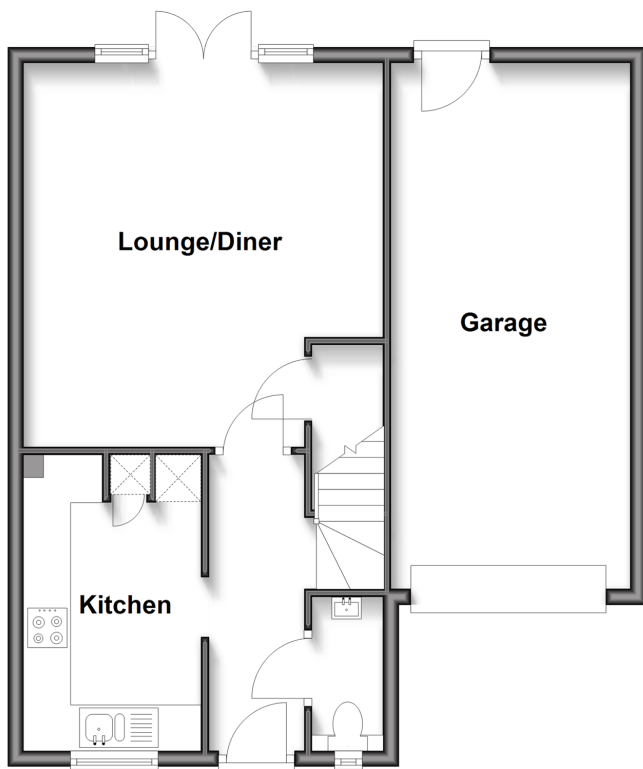
OVER 60?

Secure this property
for up to **59% less!**

cubitt&west
Helping you move forwards

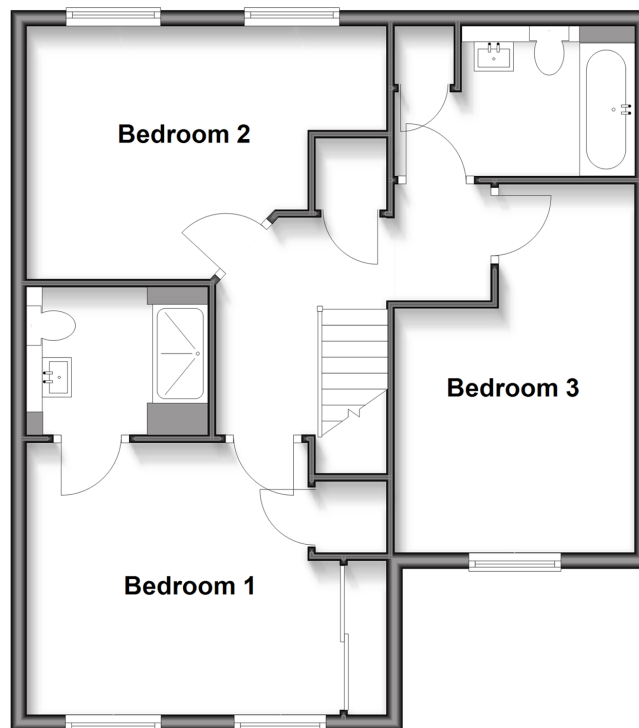
Ground Floor

Approx. 60.7 sq. metres (653.1 sq. feet)



First Floor

Approx. 60.7 sq. metres (653.7 sq. feet)



Accommodation

GROUND FLOOR

Entrance Hall

Cloakroom

Lounge/Diner: 16'0 at widest point x 15'1 at widest point (4.88m x 4.60m)

Kitchen: 12'3 x 7'6 (3.74m x 2.29m)

FIRST FLOOR

Landing

Bedroom 1: 15'0 into fitted wardrobes x 11'4 (4.58m x 3.46m)

En Suite Shower Room: 6'8 x 6'2 (2.03m x 1.88m)

Bedroom 2: 11'9 at widest point x 10'7 at widest point (3.58m x 3.23m)

Bedroom 3: 10'2 at widest point x 9'11 at widest point (3.10m x 3.02m)

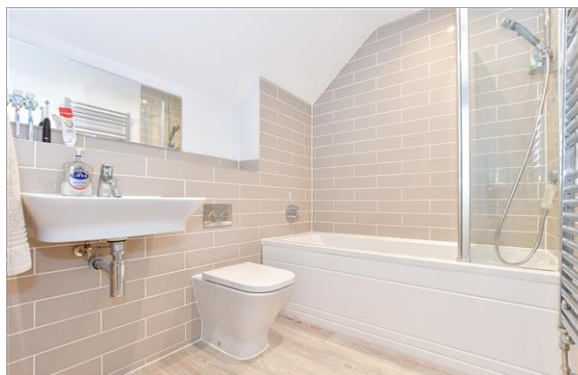
Bathroom: 9'10 x 5'7 (3.00m x 1.70m)

OUTSIDE

Garage : 22'11 x 10'1 (6.99m x 3.08m)

Driveway

Front & Rear Garden



Main features

- Excellent position with views over the playing fields to the hills beyond
- Good size double bedrooms
- Lovely size rear garden that captures the afternoon and evening sun
- Separate kitchen and good size lounge diner
- Easy main road access to Horsham, Crawley, Gatwick and the M23
- Close to bus stop for numbers 10, 23 and 200



Nearest Schools

Primary Schools: Kilnwood Vale Primary 0.1 miles, Bewbush Community Primary 0.7 miles, Waterfield Primary 0.8 miles. Secondary Schools: Holy Trinity CofE Secondary School, Crawley 1.3 miles, St Wilfrid's Catholic Comprehensive School, Crawley 1.6 miles.



Transport Information

Train Stations: Faygate 1.0 miles, Ifield 1.4 miles, Crawley 2.4 miles, Three Bridges 4.7 miles.



Address

Stillwell Way, Faygate, West Sussex, RH12



Directions

For directions to this property please contact us.



cubitt&west
Helping you move forwards

Call Horsham Branch 01403 269268 ■ cubittandwest.co.uk



■ Legal advice should be taken to verify fixtures/fittings, planning, alterations and/or lease details ■ Appliances & services are untested, dimensions are approximate and floor plans are not to scale
■ Through a Homewise Home For Life Plan people aged 60+ can secure this property for up to 59% less, by purchasing a Lifetime Lease.



20917916/20250227/SEH/CB