



**Price**  
**£485,000**

**Freehold**

3x  2x  1x 

**Low Weald Lane,  
Broadbridge Heath,  
Horsham, RH12**

**OVER 60?**

Secure this property  
for up to **59% less!**

**cubitt&west**  
Helping you move forwards





## Main features

- Newly built in 2018 and boasts remainder of NHBC Warranty
- Good size double bedrooms
- Luxury of an en suite to the principal bedroom
- Convenience of a car port with 2 car park spaces
- Versatile layout with a separate lounge and kitchen/dining room

## Accommodation

### GROUND FLOOR

Entrance Hall

Cloakroom

Kitchen/Dining Room: 14'7 x 11'5 (4.45m x 3.48m)

Lounge: 13'8 at widest point x 11'1 at widest point (4.17m x 3.38m)

### FIRST FLOOR

Landing

Bedroom 3: 14'7 x 10'1 (4.45m x 3.08m)

Bedroom 2: 14'7 x 11'6 at widest point (4.45m x 3.51m)

Bathroom: 7'4 x 7'4 (2.24m x 2.24m)

### SECOND FLOOR

Landing

Bedroom 1: 14'7 x 10'11 (4.45m x 3.33m) narrowing to 9'10 x 6'4 (3.00m x 1.93m)

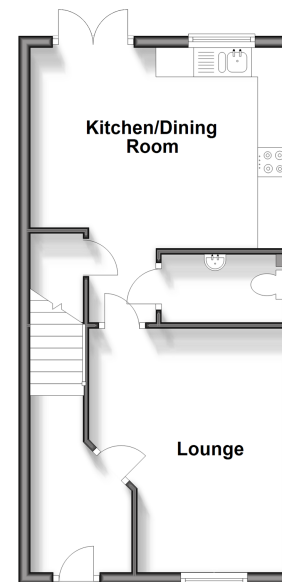
En Suite Shower Room: 8'1 x 6'2 (2.47m x 1.88m)

### OUTSIDE

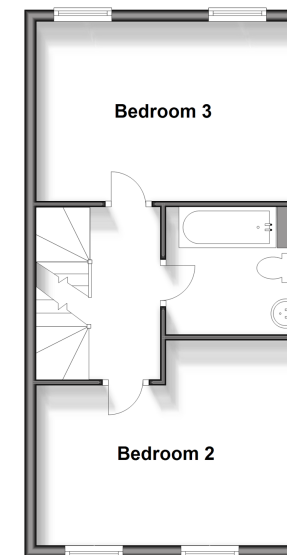
Front & Rear Garden

Car Port & Off Road Parking

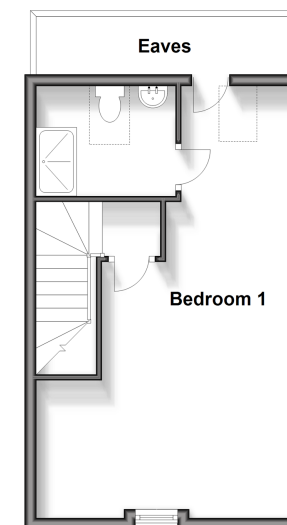
**Ground Floor**  
Approx. 39.8 sq. metres (428.0 sq. feet)



**First Floor**  
Approx. 40.0 sq. metres (430.7 sq. feet)



**Second Floor**  
Approx. 32.7 sq. metres (351.7 sq. feet)



**Call Horsham - 01403 269268 ■ [cubittandwest.co.uk](http://cubittandwest.co.uk)**

- Legal advice should be taken to verify fixtures/fittings, planning, alterations and/or lease details
- Appliances & services are untested, dimensions are approximate and floor plans are not to scale
- Through a Homewise Home For Life Plan people aged 60+ can secure this property for up to 59% less, by purchasing a Lifetime Lease.



20917781/20250306/CB/VP