



Price

£270,000

Leasehold

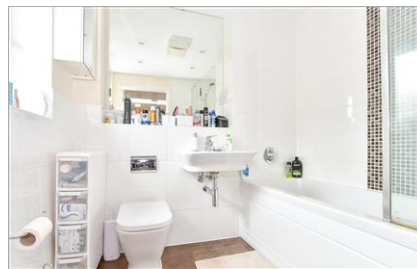
2x  1x  1x 

**Rushy Field, Faygate,
Horsham, West Sussex,
RH12**

OVER 60?

Secure this property
for up to **59% less!**

cubitt&west
Helping you move forwards



Main features

- Located at Kilnwood Vale
- Convenience of garage and allocated parking space
- Large open plan kitchen and living space with Juliet balcony
- With no onward chain, the property is ready to move into
- Just a short drive to Horsham, Crawley, Gatwick and the M23

Accommodation

FIRST FLOOR

Entrance Hallway

Kitchen/Lounge/Diner: 19'8 x 11'3 (6.00m x 3.43m)

Juliette Balcony

Bedroom 2: 12'2 x 8'0 (3.71m x 2.44m)

Bedroom 1: 15'3 x 13'7 up to fitted wardrobes (4.65m x 4.14m)

Bathroom: 6'10 x 5'5 (2.08m x 1.65m)

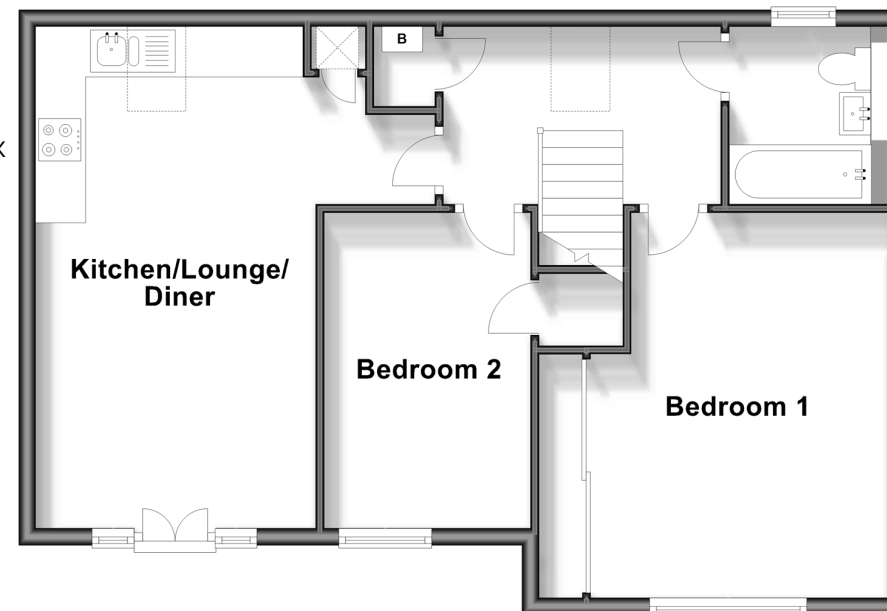
OUTSIDE

Garage: 20'5 x 9'5 (6.23m x 2.87m)

Allocated Parking Space

First Floor

Approx. 63.1 sq. metres (678.7 sq. feet)



Call Horsham - 01403 269268 ■ cubittandwest.co.uk

■ Legal advice should be taken to verify fixtures/fittings, planning, alterations and/or lease details
 ■ Through a Homewise Home For Life Plan people aged 60+ can secure this property for up to 59% less, by purchasing a Lifetime Lease.

■ Appliances & services are untested, dimensions are approximate and floor plans are not to scale