

OVER 60?

Secure this property
for up to **59% less!**



Price
£730,000
Freehold

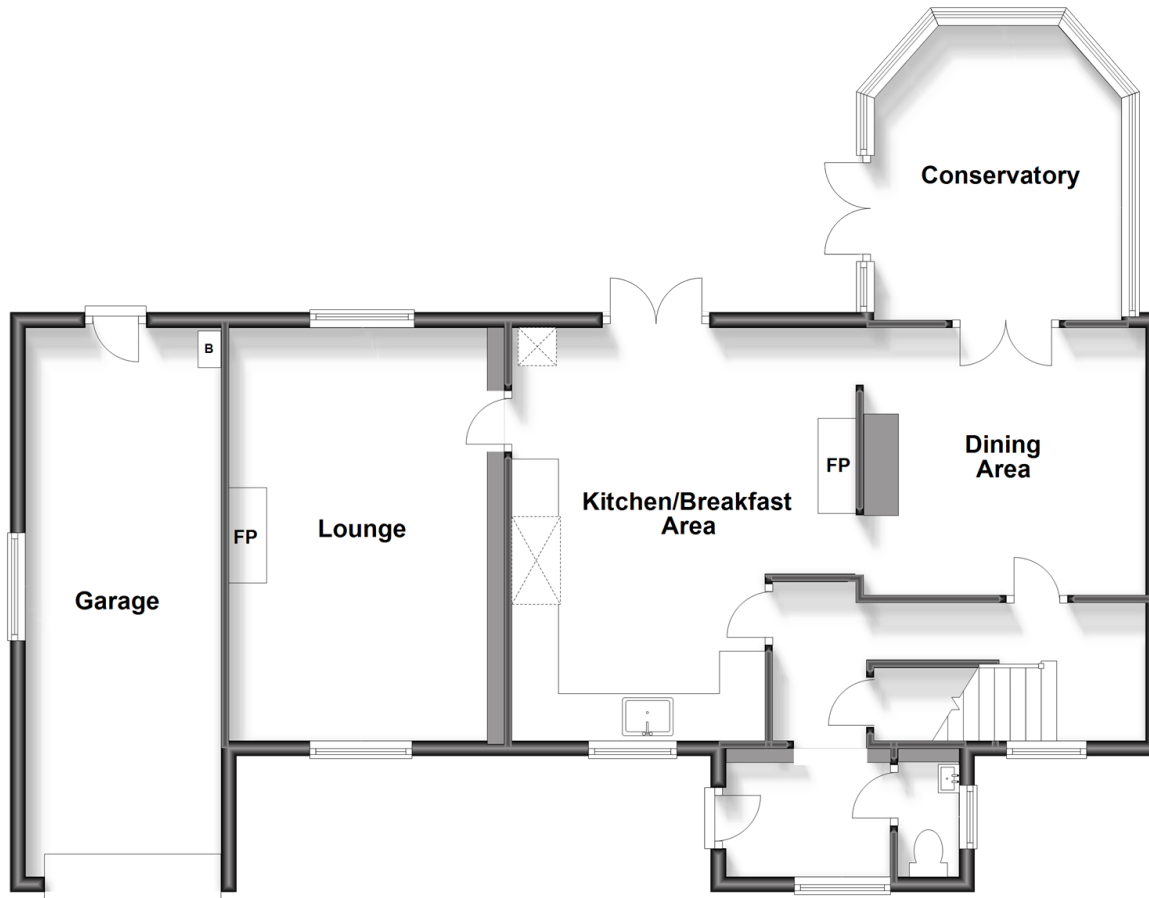
4x  2x  1x 

Pondtail Road, Horsham, West Sussex,
RH12

cubitt&west
Helping you move forwards

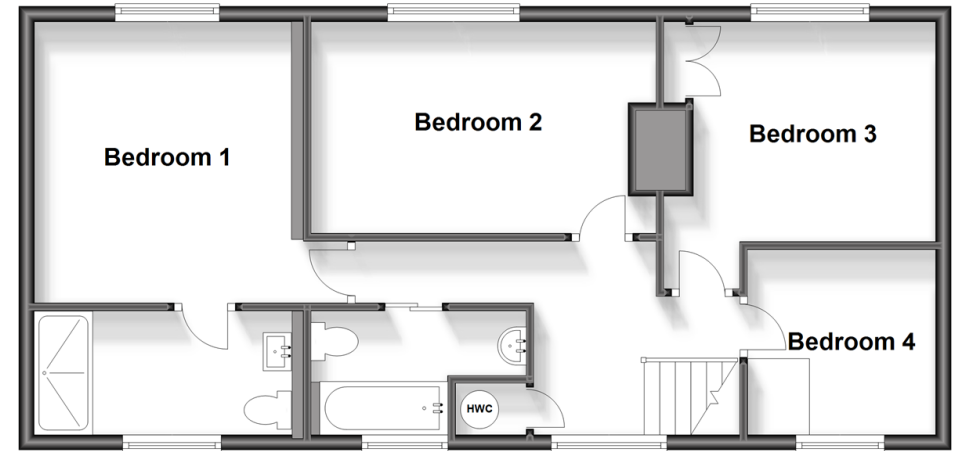
Ground Floor

Approx. 101.7 sq. metres (1095.1 sq. feet)



First Floor

Approx. 64.1 sq. metres (689.5 sq. feet)



Accommodation

GROUND FLOOR

Entrance Porch

Cloakroom

Entrance Hallway

Kitchen/Breakfast Area: 18'1 at widest point (5.52m) x 13'5 (4.09m) narrowing to 10'8 (3.25m)

Dining Area: 11'11 at widest point x 11'7 at widest point (3.63m x 3.53m)

Conservatory: 12'10 at widest point x 10'6 at widest point (3.91m x 3.20m)

Lounge: 18'2 x 11'0 (5.54m x 3.36m)

FIRST FLOOR

Landing

Bedroom 1: 12'6 x 11'0 (3.81m x 3.36m)

En Suite Shower Room: 11'0 x 5'5 (3.36m x 1.65m)

Bathroom: 5'11 at widest point x 5'3 at widest point (1.80m x 1.60m)

Bedroom 2: 14'11 at widest point x 9'4 (4.55m x 2.85m)

Bedroom 3: 10'7 at widest point x 9'8 at widest point (3.23m x 2.95m)

Bedroom 4: 8'3 at widest point x 7'11 at widest point (2.52m x 2.41m)

OUTSIDE

Garage & Driveway

Front & Rear Garden



Main features

- Original farmhouse built circa 1952 with later side extension
- Beautiful cottage-style kitchen/ breakfast room
- Cosy lounge and dining room
- Good size front and rear gardens
- Easy access to both Littlehaven station and Horshams northern bypass



Nearest Schools

Primary Schools: Holbrook Primary 0.2 miles, North Heath Community Primary 0.6 miles, All Saints CofE Primary 0.7 miles

Secondary Schools: Millais School 1.7 miles, Forest



Transport Information

Train Stations: Warnham 0.5 miles, Littlehaven 0.7 miles, Horsham 1.5 miles



Address

Pondtail Road, Horsham, West Sussex, RH12



Directions

For directions to this property please contact us.



cubitt&west
Helping you move forwards

Call Horsham Branch 01403 269268 ■ cubittandwest.co.uk



■ Legal advice should be taken to verify fixtures/fittings, planning, alterations and/or lease details ■ Appliances & services are untested, dimensions are approximate and floor plans are not to scale
■ Through a Homewise Home For Life Plan people aged 60+ can secure this property for up to 59% less, by purchasing a Lifetime Lease.



20908360/20241010/SEH/CB