



OVER 60?

Secure this property
for up to **59% less!**

Price

£625,000

Freehold

3x  1x  1x 

**Allingham Gardens,
Horsham, West Sussex,
RH12**

cubitt & west
Helping you move forwards



Main features

- No onward chain
- Refitted bathroom
- In need of modernisation, subject to any necessary consents
- Convenience of a garage and driveway parking
- Within easy reach of Horsham train station

Accommodation

GROUND FLOOR

Entrance Hallway

Cloakroom: 7'4 x 2'10 (2.24m x 0.86m)

Lounge/Dining Room: (L-shaped) 21'5 x 11'5 (6.53m x 3.48m) plus 9'3 x 6'10 (2.82m x 2.08m)

Kitchen: 9'4 x 8'8 (2.85m x 2.64m)

FIRST FLOOR

Landing

Bedroom 1: 17'6 into fitted wardrobes x 11'9 (5.34m x 3.58m)

Bedroom 2: 14'5 x 9'5 up to fitted wardrobes (4.40m x 2.87m)

Bedroom 3: 13'2 x 9'4 up to fitted wardrobes (4.02m x 2.85m)

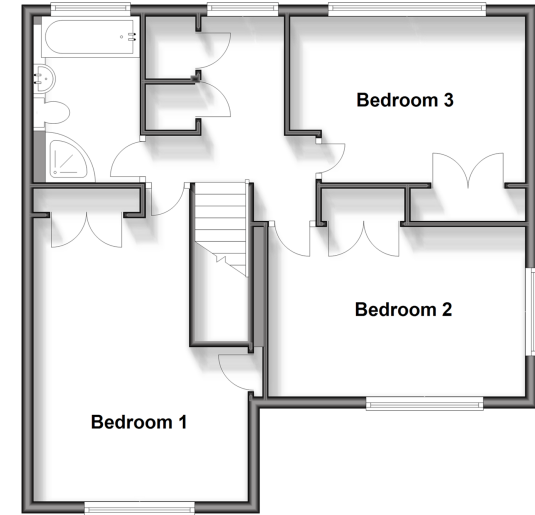
Bathroom: 9'3 x 5'4 (2.82m x 1.63m)

OUTSIDE

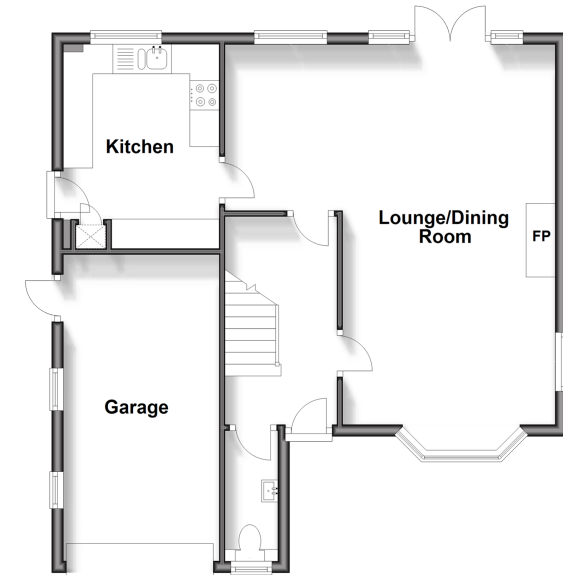
Garage & Driveway

Front & Rear Garden

First Floor
Approx. 60.8 sq. metres (654.5 sq. feet)



Ground Floor
Approx. 63.3 sq. metres (681.8 sq. feet)



Call Horsham - 01403 269268 ■ cubittandwest.co.uk

- Legal advice should be taken to verify fixtures/fittings, planning, alterations and/or lease details
- Appliances & services are untested, dimensions are approximate and floor plans are not to scale
- Through a Homewise Home For Life Plan people aged 60+ can secure this property for up to 59% less, by purchasing a Lifetime Lease.



20917657/20241011/SEH/VP