



Price
£650,000

Freehold

4x  2x  2x 

**Friday Street, Warnham,
Horsham, West Sussex,
RH12**

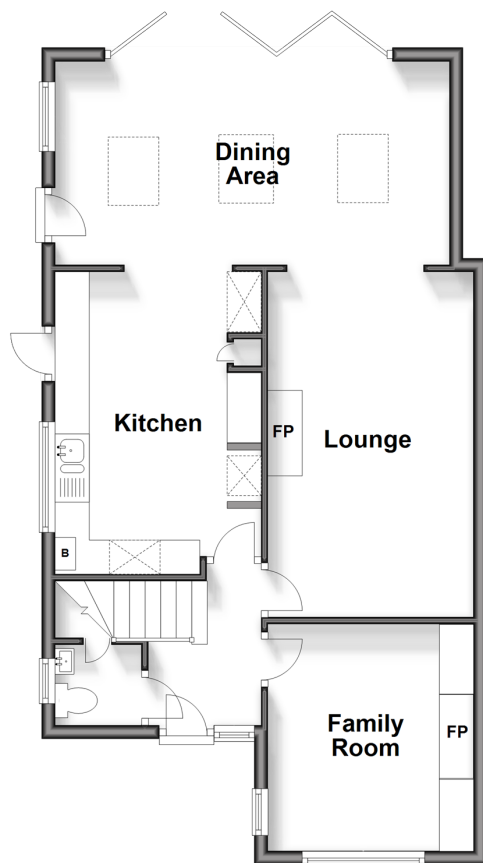
OVER 60?

Secure this property
for up to **59% less!**

cubitt&west
Helping you move forwards

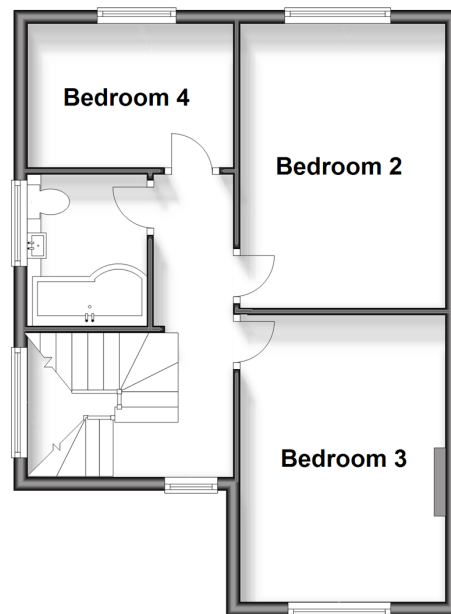
Ground Floor

Approx. 63.3 sq. metres (680.9 sq. feet)



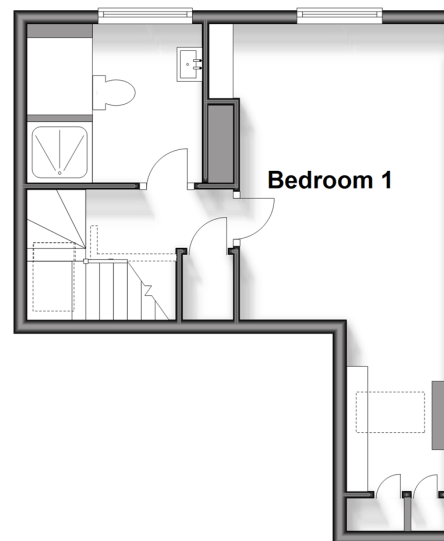
First Floor

Approx. 46.5 sq. metres (500.9 sq. feet)



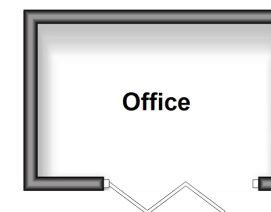
Second Floor

Approx. 31.0 sq. metres (334.1 sq. feet)



Outbuilding

Approx. 7.7 sq. metres (83.3 sq. feet)



Accommodation

GROUND FLOOR

Entrance Hall
Cloakroom
Family Room: 10'11 x 9'1 (3.33m x 2.77m)
Lounge: 16'10 at widest point x 9'11 (5.13m x 3.02m)
Kitchen: 15'3 x 9'11 (4.65m x 3.02m)
Dining Area: 18'11 x 9'9 (5.77m x 2.97m)

FIRST FLOOR

Landing
Bedroom 2: 14'2 x 9'11 (4.32m x 3.02m)
Bedroom 3: 13'9 x 9'11 (4.19m x 3.02m)
Bedroom 4: 10'1 x 7'1 (3.08m x 2.16m)
Bathroom: 6'11 x 5'8 (2.11m x 1.73m)

SECOND FLOOR

Landing
Shower Room: 8'0 x 5'3 (2.44m x 1.60m)
Bedroom 1: (L-shaped) 14'11 x 9'5 (4.55m x 2.87m) plus 10'0 x 4'4 (3.05m x 1.32m)

OUTBUILDING

Office

OUTSIDE

Front & Rear Garden
Off Road Parking



Main features

- Modernised family home retaining character features
- Stunning country walks and the local pubs, shop and butcher just moments away
- Beautiful open plan ground floor with bifold doors onto garden
- Warnham train station within walking distance
- Fabulous outbuilding/office with power and internet connection



Nearest Schools

Primary Schools: Warnham CofE Primary 0.1 miles, Shelley Primary 1.3 miles, North Heath Community Primary 1.5 miles. Secondary Schools: Farlington School 1.2 miles, Tanbridge House School 1.6 miles, Millais School 2.6 miles, The Forest School 4.5 miles



Transport Information

Train Stations: Warnham 0.9 miles, Littlehaven 1.9 miles, Horsham 2.1 miles



Address

Friday Street, Warnham, Horsham, West Sussex, RH12



Directions

For directions to this property please contact us.



cubitt&west
Helping you move forwards

Call Horsham Branch 01403 269268 ■ cubittandwest.co.uk



■ Legal advice should be taken to verify fixtures/fittings, planning, alterations and/or lease details ■ Appliances & services are untested, dimensions are approximate and floor plans are not to scale
■ Through a Homewise Home For Life Plan people aged 60+ can secure this property for up to 59% less, by purchasing a Lifetime Lease.



20913290/20250128/RSH/CB