

OVER 60?

Secure this property
for up to **59% less!**



Price

£630,000

Freehold

4x  2x  2x 

Sargent Way, Broadbridge Heath,
Horsham, West Sussex, RH12

cubitt & west
Helping you move forwards



Main features

- Convenience of a garage and parking for 3 cars
- Fantastic corner plot with sunny aspect garden
- Built by Bovis Homes to the 'Montpelier' design
- Great location
- Potential to extend, subject to planning permission

Accommodation

GROUND FLOOR

Entrance Hallway: 12'4 x 4'8 (3.76m x 1.42m)

Cloakroom: 5'6 x 3'4 (1.68m x 1.02m)

Kitchen Area: 12'3 x 8'0 (3.74m x 2.44m)

Dining Area: 10'3 x 10'1 (3.13m x 3.08m)

Lounge: 18'3 at widest point x 14'0 at widest point (5.57m x 4.27m)

FIRST FLOOR

Landing

Bedroom 1: 13'0 x 10'1 up to fitted wardrobes (3.97m x 3.08m)

En Suite Shower Room: 5'0 x 4'4 (1.53m x 1.32m)

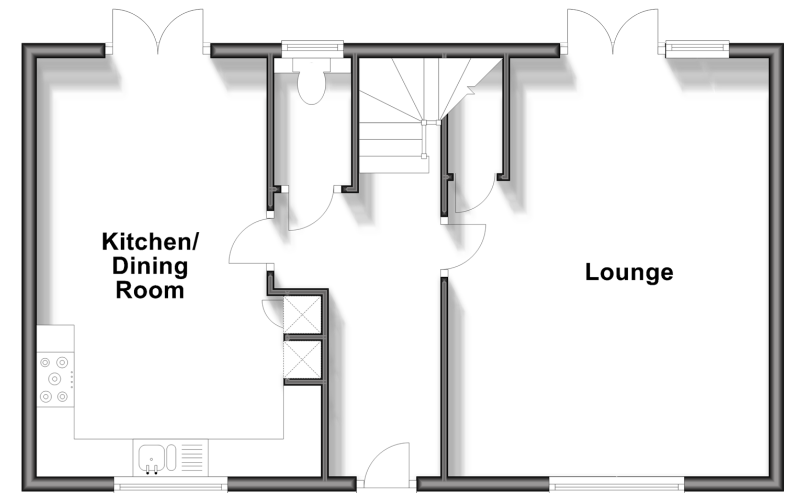
Bedroom 2: 11'1 x 9'9 (3.38m x 2.97m)

Bedroom 3: 11'1 x 8'1 (3.38m x 2.47m)

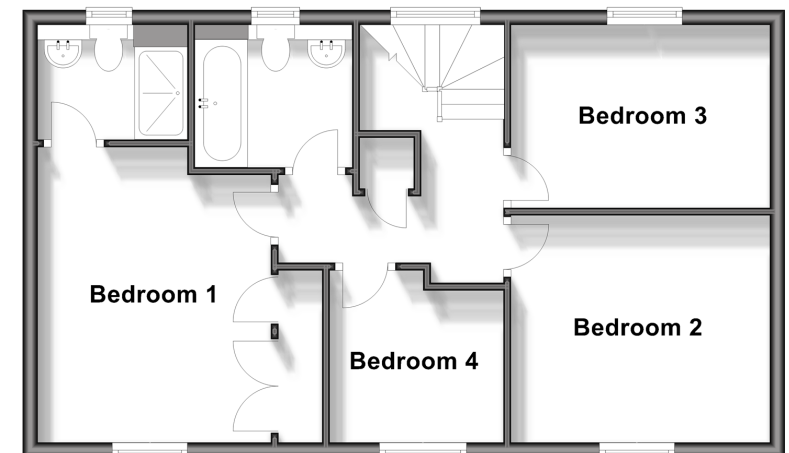
Bedroom 4: 8'0 at widest point x 7'9 at widest point (2.44m x 2.36m)

Bathroom: 6'8 x 6'2 (2.03m x 1.88m)

Ground Floor
Approx. 54.3 sq. metres (584.7 sq. feet)



First Floor
Approx. 54.5 sq. metres (586.8 sq. feet)



Call Horsham - 01403 269268 ■ cubittandwest.co.uk

- Legal advice should be taken to verify fixtures/fittings, planning, alterations and/or lease details
- Appliances & services are untested, dimensions are approximate and floor plans are not to scale
- Through a Homewise Home For Life Plan people aged 60+ can secure this property for up to 59% less, by purchasing a Lifetime Lease.



20917778/20241112/SEH/VP