



Price

£85,000

Leasehold

1x  1x  1x 

**Chesterton Court,
Manorfields, Horsham,
West Sussex, RH13**

cubitt & west
Helping you move forwards



Main features

- Exclusively for over 55s
- Spacious lounge /dining room
- Double bedroom with built-in wardrobe
- Low-level walk-in shower
- Communal lounge, laundry drying room & attractive gardens
- Guest room facilities & residents' parking

Accommodation

SECOND FLOOR

Entrance Hall

Lounge / Dining Room : 18'0 x 10'7
(5.49m x 3.23m)

Bedroom : 14'7 into fitted wardrobes x 8'9 (4.45m x 2.67m)

Kitchen : 7'10 x 7'0 (2.39m x 2.14m)

Shower Room

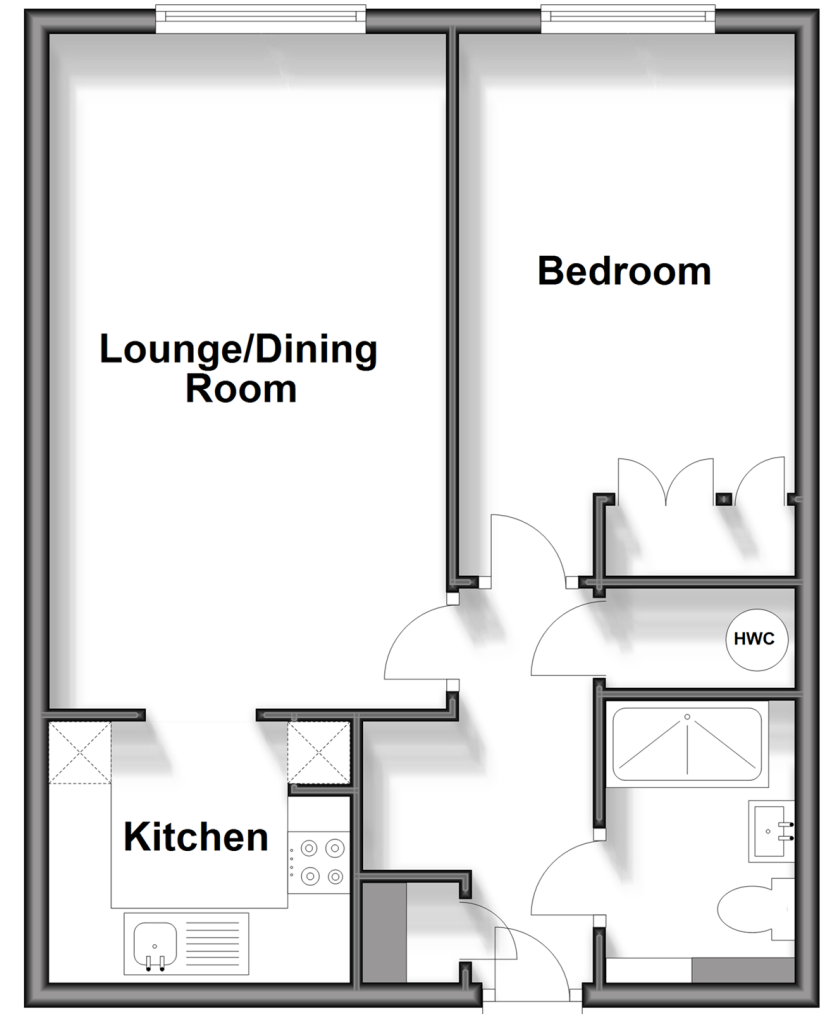
OUTSIDE

Communal Gardens

Unallocated Parking

Second Floor

Approx. 45.9 sq. metres (494.3 sq. feet)



Call Horsham - 01403 269268 ■ cubittandwest.co.uk

- Legal advice should be taken to verify fixtures/fittings, planning, alterations and/or lease details
- Appliances & services are untested, dimensions are approximate and floor plans are not to scale



20917738/20240926/KEP/VP