

OVER 60?

Secure this property
for up to **59% less!**



Price

£599,950

Freehold

4x  2x  1x 

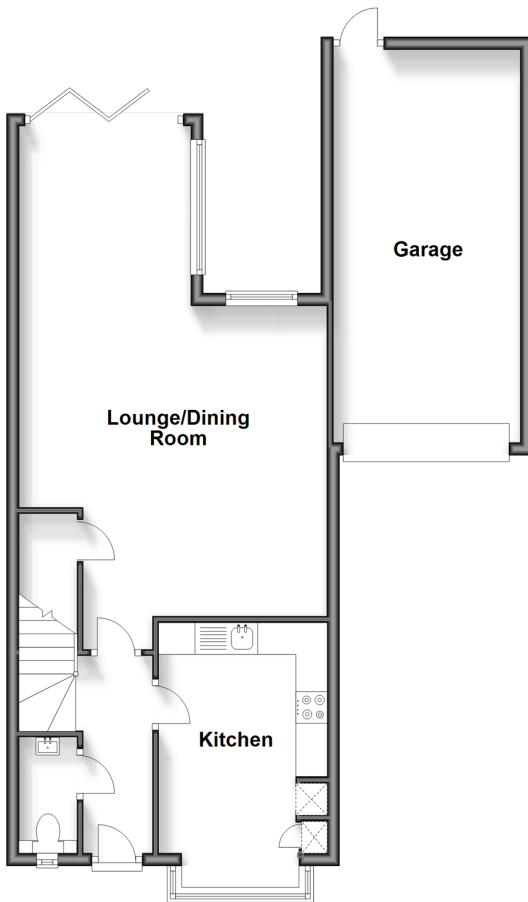
Scholars Walk, Horsham, West Sussex,

RH12

cubitt & west
Helping you move forwards

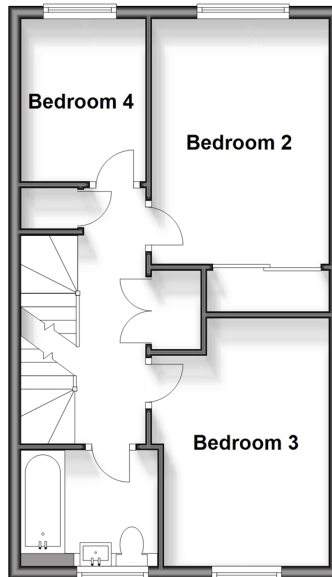
Ground Floor

Approx. 69.2 sq. metres (745.3 sq. feet)



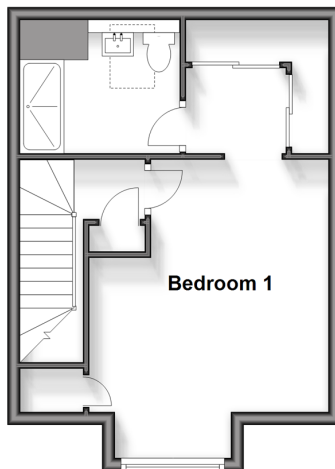
First Floor

Approx. 42.3 sq. metres (455.6 sq. feet)



Second Floor

Approx. 31.3 sq. metres (336.4 sq. feet)



Accommodation

GROUND FLOOR

Entrance Hall

Cloakroom

Kitchen: 15'0 into bay x 8'8 (4.58m x 2.64m)

Lounge/Dining Room: 16'2 x 16'1 (4.93m x 4.91m) narrowing to 9'10 x 9'10 (3.00m x 3.00m)

Dining Area: 9'10 x 9'10 (3.00m x 3.00m)

FIRST FLOOR

Landing

Bedroom 4: 8'5 x 6'6 (2.57m x 1.98m)

Bedroom 2: 15'1 into fitted wardrobes x 9'3 (4.60m x 2.82m)

Bathroom

Bedroom 3: 13'1 at widest point x 9'4 at widest point (3.99m x 2.85m)

SECOND FLOOR

Landing

Bedroom 1: 13'1 x 12'7 at widest point (3.99m x 3.84m)

Dressing Area: 7'4 into fitted wardrobes x 7'3 into fitted wardrobes (2.24m x 2.21m)

En Suite Shower Room: 7'8 x 5'1 (2.34m x 1.55m)

OUTSIDE

Front & Rear Garden

Off Road Parking

Garage: 20'2 x 9'10 (6.15m x 3.00m)



Main features

- With no onward chain this property is ready to move into
- Built by Berkeley Homes to an excellent standard
- Spacious accommodation
- Fantastic principal bedroom suite with dressing area and en-suite
- Convenience of attached garage and driveway parking
- Recently repainted inside and out

Nearest Schools

Primary Schools: St Mary's CofE (Aided) Primary 1.0 miles, Arunside School, Horsham 1.1 miles, St John's Catholic Primary 1.1 miles. Secondary Schools: Tanbridge House School 0.8 miles, Muntham House School 2.6 miles, Millais School 2.7 miles

Transport Information

Train Stations: Horsham 1.8 miles, Christs Hospital 3.2 miles, Warnham 3.4 miles

Address

Scholars Walk, Horsham, West Sussex, RH12

Directions

For directions to this property please contact us.



cubitt&west
Helping you move forwards

Call Horsham Branch 01403 269268 ■ cubittandwest.co.uk



- Legal advice should be taken to verify fixtures/fittings, planning, alterations and/or lease details
- Appliances & services are untested, dimensions are approximate and floor plans are not to scale
- Through a Homewise Home For Life Plan people aged 60+ can secure this property for up to 59% less, by purchasing a Lifetime Lease.

EPC RATING

CURRENT: B(32) POTENTIAL: B(34)

20917696/20240625/VP/CB