



**Price**

**£380,000**

**Freehold**

2x  1x  1x 

**Lockwood Close,  
Horsham, West Sussex,  
RH12**

**OVER 60?**

Secure this property  
for up to **59% less!**

**cubitt&west**  
Helping you move forwards





## Main features

- A beautifully presented property that is ready to move into
- Stunning high quality modern kitchen and large wet room
- Conservatory overlooks rear garden
- Plenty of driveway parking and garage with new roof
- A quiet location just a short walk to local shops and 98 bus route

## Accommodation

### GROUND FLOOR

#### Entrance Hall

Lounge: 17'1 at widest point x 12'3 at widest point (5.21m x 3.74m)

Kitchen: 9'10 at widest point x 6'5 at widest point (3.00m x 1.96m)

#### Inner Hallway

Wet Room: 8'6 x 6'3 (2.59m x 1.91m)

Bedroom 1: 15'8 into fitted wardrobes x 9'0 at widest point (4.78m x 2.75m)

Bedroom 2: 9'11 x 9'5 (3.02m x 2.87m)

Conservatory: 17'0 x 7'7 (5.19m x 2.31m)

### OUTSIDE

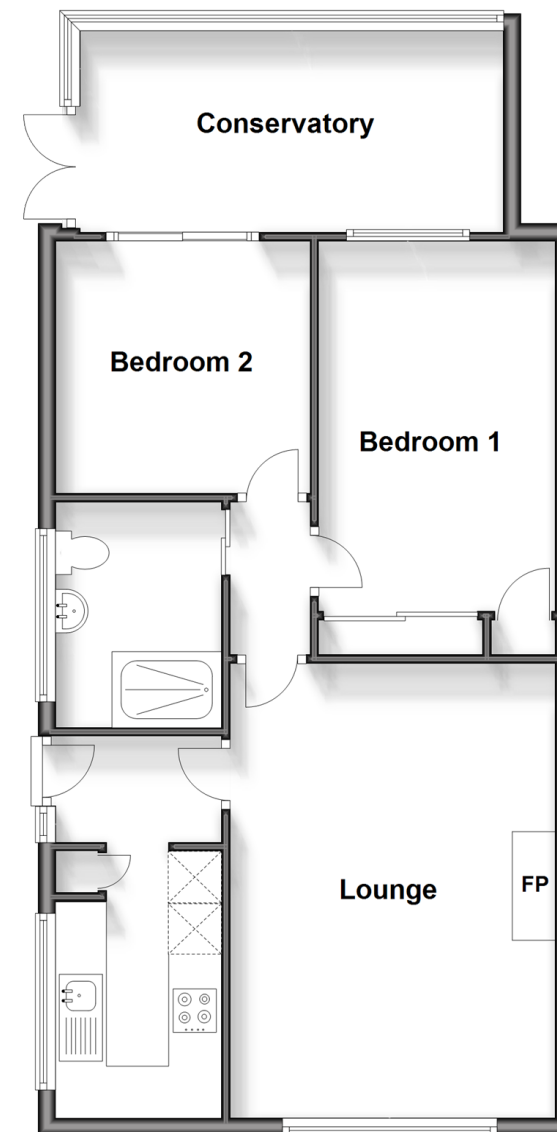
#### Front and Rear Garden

Garage: 15'11 x 8'2 (4.85m x 2.49m)

#### Driveway

## Ground Floor

Approx. 70.3 sq. metres (756.3 sq. feet)



**Call Horsham - 01403 269268 ■ [cubittandwest.co.uk](http://cubittandwest.co.uk)**

- Legal advice should be taken to verify fixtures/fittings, planning, alterations and/or lease details
- Appliances & services are untested, dimensions are approximate and floor plans are not to scale
- Through a Homewise Home For Life Plan people aged 60+ can secure this property for up to 59% less, by purchasing a Lifetime Lease.



21001357/20240402/SEH/CB